

LISSÉ Wall elbow - Brushed Chrome

LISSÉ

28 450 845

Product version from 3/9/2016 to 7/6/2018



- 3/8" shower outlet
  - rosette 60 x 78 mm
  - 1/2" connection
  - WRAS

Intrinsic protection against back flow.

	Brushed Chrome	28 450 845-93
	Chrome	28 450 845-00
	Brushed Platinum	28 450 845-06
	Dark Chrome	28 450 845-19
	Light Gold	28 450 845-26
	Brushed Light Gold	28 450 845-27
	Matte Black	28 450 845-33
	Brushed Bronze	28 450 845-42
	Brushed Dark Platinum	28 450 845-99

Recommended miscellaneous



- Concealed wall elbow -

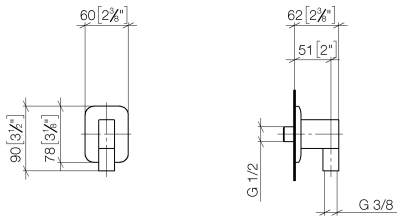
•min. recess depth 90 mm

•max. recess depth 163 mm

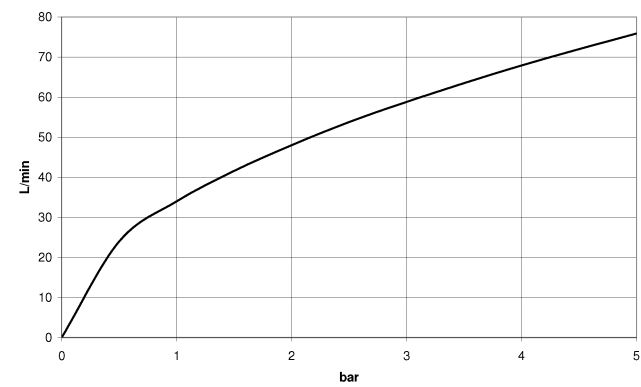
35 085 970 90

28 450 845 Product version from 3/9/2016 to 7/6/2018

mm [inches]



Flow rate chart



Codes & Standards

ASME A112.18.1	cUPC	Scottish Water Byelaws	UK Water Supply Regulations
----------------	------	---------------------------	--------------------------------



## LISSE Wall elbow - Brushed Chrome

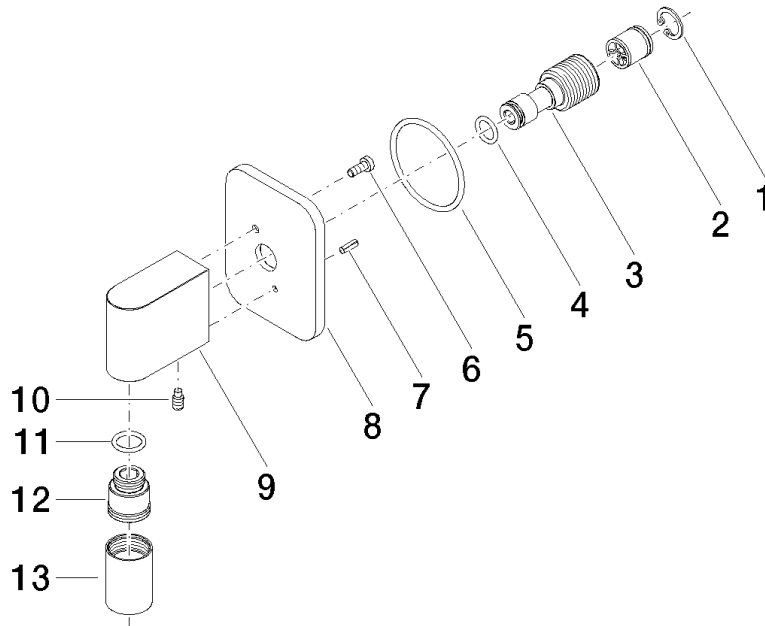
LISSE

28 450 845 Product version from 3/9/2016 to 7/6/2018

### Certificates and sustainability

WRAS\_2310

IAPMO\_4976



## Spare parts list

No.	Item Number	Name	Quantity used	Delivery time
10	09 31 11 005 90	pin	1.00	2
12	09 24 03 107 20 90	nipple	1.00	2
8	09 27 84 021-93	rosette	1.00	20
3	09 24 03 116 20 90	nipple	1.00	2
7	09 31 11 026 90	pin	1.00	2
6	09 30 30 054 90	screw	1.00	2
4	09 14 10 008 90	seal	1.00	2
1	09 16 01 014 90	ring	1.00	2
9	09 11 03 046-93	connection	1.00	20
5	09 14 10 142 90	seal	1.00	2
11	90 14 10 077 00 90	seal	1.00	2
13	90 21 02 069 00-93	cover	1.00	20
2	90 23 01 141 00 90	back-flow preventer	1.00	2