

Shower head - Dark Chrome

28 505 979 Product version from 7/1/2022



- 155mm projection
- ball-joint pivotable through 18° (in any direction)
- Three or five settings: PURIFY RAIN, COMPACT SOFT FLOW, COMPACT AQUAPRESSURE FLOW, max. flow rate 7.6 l/min (at 3 bar)
- with anti-scale system
- spray head Ø 100mm
- rosette Ø 60 mm
- 1/2" connection
- This product can help a building meet the requirements of Green Building Rating Systems, e.g. LEED®, BREEAM®, DGNB

	Dark Chrome	28 505 979-19 0050
	Chrome	28 505 979-00 0050
	Brushed Platinum	28 505 979-06 0050
	Platinum	28 505 979-08 0050
	Light Gold	28 505 979-26 0050
	Brushed Light Gold	28 505 979-27 0050
	Brushed Durabrass (23kt Gold)	28 505 979-28 0050
	Matte Black	28 505 979-33 0050
	Brushed Bronze	28 505 979-42 0050
	Brushed Champagne (22kt Gold)	28 505 979-46 0050
	Champagne (22kt Gold)	28 505 979-47 0050
	Brushed Chrome	28 505 979-93 0050
	Brushed Dark Platinum	28 505 979-99 0050

Recommended miscellaneous



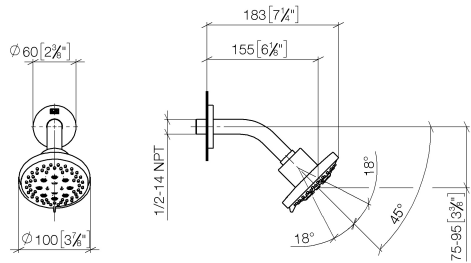
- Concealed wall elbow -**
- max. recess depth mm
 - min. recess depth mm

35 085 970 90

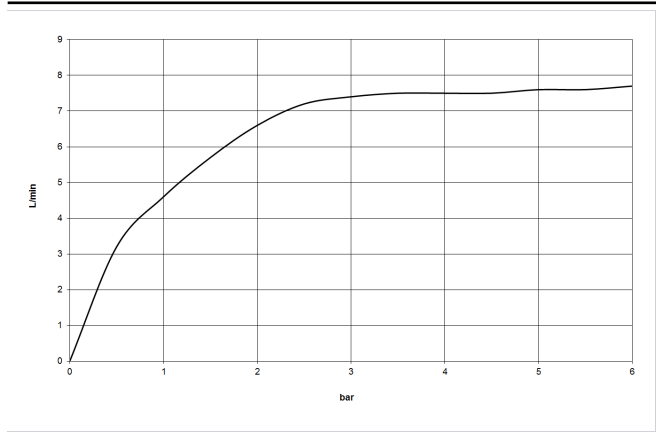
Shower head - Dark Chrome

28 505 979 Product version from 7/1/2022

mm [inches]

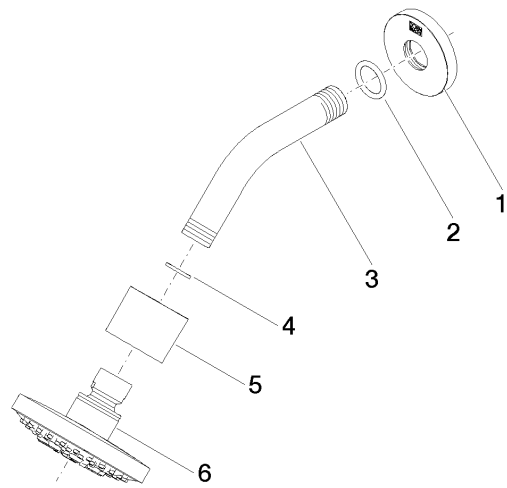


Flow rate chart



Shower head - Dark Chrome

28 505 979 Product version from 7/1/2022



Spare parts list

No.	Item Number	Name	Quantity used	Delivery time
1	09 27 22 045-19	rosette	1	20
2	90 14 10 026 00 90	seal	1	2
3	09 11 03 011-19	connection	1	20
4	90 14 20 002 00 90	seal	1	2
5	09 11 01 191-19	cover	1	20
6	90 12 05 055 00-19	shower	1	20