

Body spray without volume control - Brushed Chrome

28 518 782 Product version from 7/1/2022



- spray head Ø 55mm
- ball-joint pivotable through 25° (in any direction)
- rain flow
- anti-scale system
- rosette 60 x 60 mm
- 1/2" connection
- max. flow 5 l/min
- This product can help a building meet the requirements of Green Building Rating Systems, e.g. LEED®, BREEAM®, DGNB

	Brushed Chrome	28 518 782-93 0050
	Chrome	28 518 782-00 0050
	Brushed Platinum	28 518 782-06 0050
	Platinum	28 518 782-08 0050
	Dark Chrome	28 518 782-19 0050
	Brushed Light Gold	28 518 782-27 0050
	Brushed Durabronze (23kt Gold)	28 518 782-28 0050
	Matte Black	28 518 782-33 0050
	Brushed Champagne (22kt Gold)	28 518 782-46 0050
	Champagne (22kt Gold)	28 518 782-47 0050
	Brushed Dark Platinum	28 518 782-99 0050

Recommended miscellaneous



- Concealed wall elbow -**
- max. recess depth mm
 - min. recess depth mm

35 085 970 90

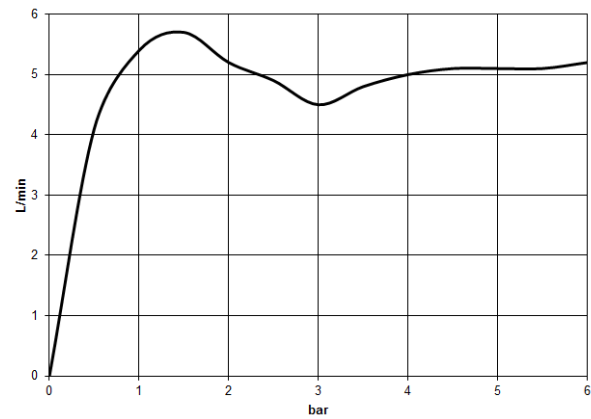
Body spray without volume control - Brushed Chrome

28 518 782 Product version from 7/1/2022

mm [inches]

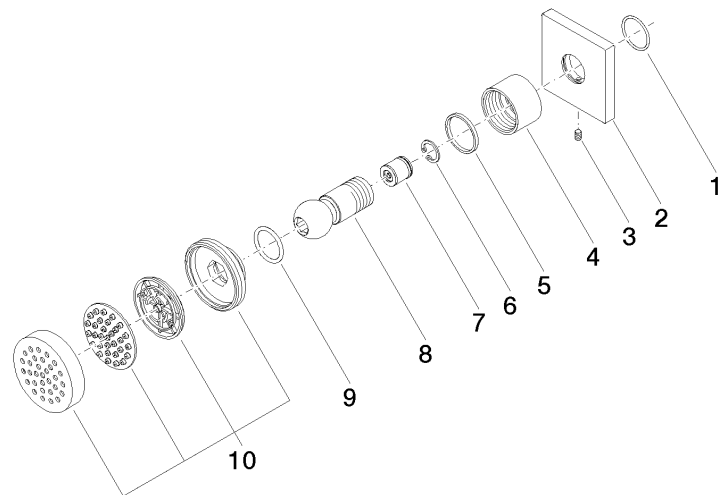


Flow rate chart



Body spray without volume control - Brushed Chrome

28 518 782 Product version from 7/1/2022



Spare parts list

No.	Item Number	Name	Quantity used	Delivery time
1	09 14 10 098 90	seal	1	2
2	09 27 98 003-93	rosette	1	20
3	09 31 11 048 90	pin	1	2
4	09 23 30 026-93	nut	1	20
5	09 14 15 010 90	ring	1	2
6	09 16 01 014 90	ring	1	2
7	09 23 01 048 90	back-flow preventer	1	2
8	09 21 40 016-93	connection	1	20
9	09 14 10 015 90	seal	1	2
10	90 12 05 027 00-93	casing (completely)	1	20