

## Rain shower with wall fixing 300 mm - Matte Black

SERIES SPECIFIC

28 679 670 Product version from 7/1/2022



- 450mm projection
- rain shower Ø 300 mm
- PURE RAIN, max. flow rate 14 l/min (at 3 bar)
- rosette 65 x 65 mm
- 1/2" connection
- with anti-scale system
- quick clearing
- This product can help a building meet the requirements of Green Building Rating Systems, e.g. LEED®, BREEAM®, DGNB

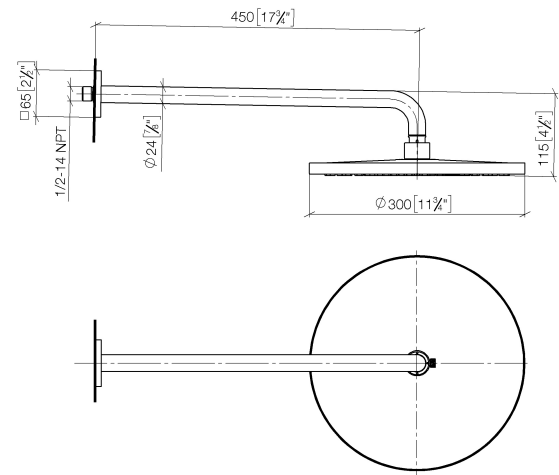
	Matte Black	28 679 670-33 0050
	Chrome	28 679 670-00 0050
	Brushed Platinum	28 679 670-06 0050
	Platinum	28 679 670-08 0050
	Dark Chrome	28 679 670-19 0050
	Brushed Light Gold	28 679 670-27 0050
	Brushed Durabrass (23kt Gold)	28 679 670-28 0050
	Brushed Champagne (22kt Gold)	28 679 670-46 0050
	Champagne (22kt Gold)	28 679 670-47 0050
	Brushed Chrome	28 679 670-93 0050
	Brushed Dark Platinum	28 679 670-99 0050

**Rain shower with wall fixing 300 mm - Matte Black**

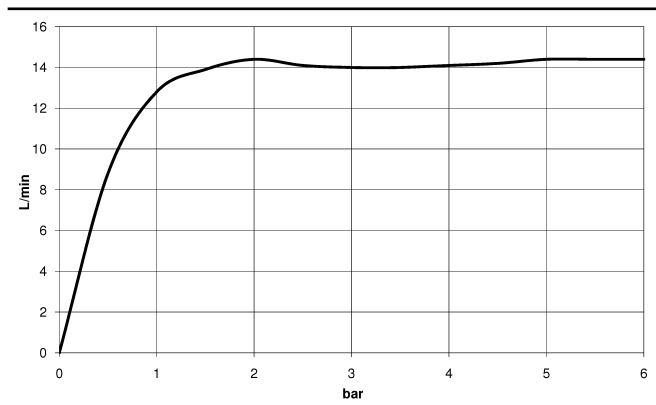
SERIES SPECIFIC

28 679 670 Product version from 7/1/2022

mm [inches]



Flow rate chart

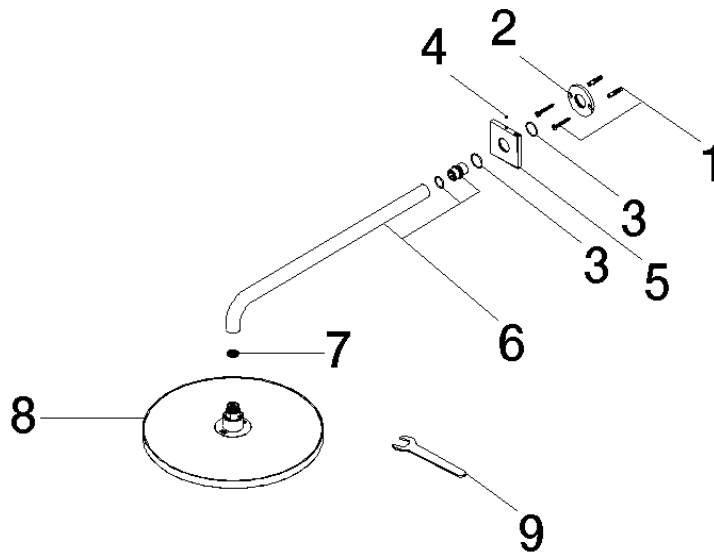


## Rain shower with wall fixing 300 mm - Matte Black

SERIES SPECIFIC

28 679 670 Product version from 7/1/2022

Parts for other  
finishes can be found  
here: [Chrome](#)



### Spare parts list

No.	Item Number	Name	Quantity used	Delivery time
	3 09 14 10 150 90	seal	2.00	2
	9 90 30 09 069 00 90	key	1.00	2
	8 90 12 05 091 00-33	shower	1.00	30
	1 04 30 31 032 00 90	fixing set	1.00	2
	6 90 11 03 070 00-33	pipe	1.00	30
	7 09 23 01 075 90	insert	1.00	2
	2 09 17 20 120 90	holder	1.00	2
	4 90 31 11 038 00 90	pin	1.00	2
	5 09 27 67 015-33	rosette	1.00	60