

**Rain shower with wall fixing 300 mm - Brushed Dark Brass**

**SERIES SPECIFIC**

28 679 970 Product version from 7/1/2022

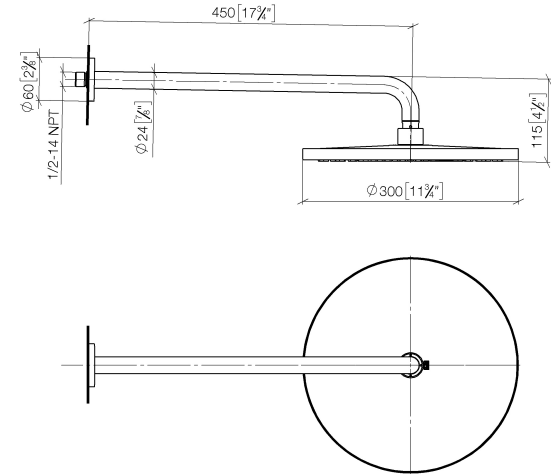


- 450mm projection
- rain shower Ø 300 mm
- PURE RAIN, max. flow rate 14 l/min (at 3 bar)
- rosette Ø 60 mm
- 1/2" connection
- with anti-scale system
- quick clearing
- This product can help a building meet the requirements of Green Building Rating Systems, e.g. LEED®, BREEAM®, DGNB

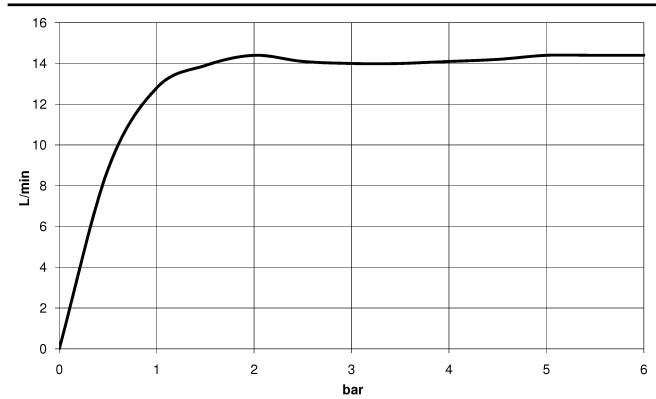
|   |                               |                    |
|---|-------------------------------|--------------------|
|    | Brushed Dark Brass            | 28 679 970-39 0050 |
|    | Chrome                        | 28 679 970-00 0050 |
|    | Brushed Platinum              | 28 679 970-06 0050 |
|    | Platinum                      | 28 679 970-08 0050 |
|    | Dark Chrome                   | 28 679 970-19 0050 |
|    | Light Gold                    | 28 679 970-26 0050 |
|    | Brushed Light Gold            | 28 679 970-27 0050 |
|    | Brushed Durabrass (23kt Gold) | 28 679 970-28 0050 |
|   | Matte Black                   | 28 679 970-33 0050 |
|  | Brushed Bronze                | 28 679 970-42 0050 |
|  | Brushed Champagne (22kt Gold) | 28 679 970-46 0050 |
|  | Champagne (22kt Gold)         | 28 679 970-47 0050 |
|  | Brushed Chrome                | 28 679 970-93 0050 |
|  | Brushed Dark Platinum         | 28 679 970-99 0050 |

28 679 970 Product version from 7/1/2022

mm [inches]



**Flow rate chart**

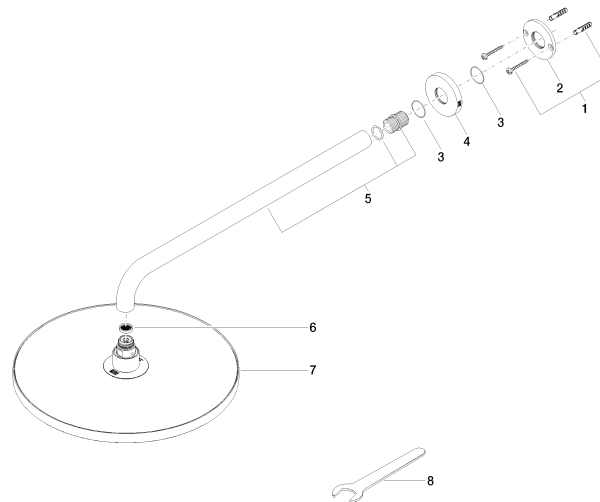


## Rain shower with wall fixing 300 mm - Brushed Dark Brass

SERIES SPECIFIC

28 679 970 Product version from 7/1/2022

Parts for other  
finishes can be found  
here: [Chrome](#)



### Spare parts list

| No. | Item Number        | Name       | Quantity used | Delivery time |
|-----|--------------------|------------|---------------|---------------|
| 7   | 04 12 05 091 10-39 | shower     | 1.00          | 60            |
| 8   | 90 30 09 069 00 90 | key        | 1.00          | 2             |
| 2   | 09 17 20 120 90    | holder     | 1.00          | 2             |
| 3   | 09 14 10 150 90    | seal       | 2.00          | 2             |
| 1   | 04 30 31 032 00 90 | fixing set | 1.00          | 2             |
| 5   | 90 11 03 070 00-39 | pipe       | 1.00          | 30            |
| 6   | 09 23 01 075 90    | insert     | 1.00          | 2             |
| 4   | 09 27 97 015-39    | rosette    | 1.00          | 60            |