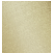
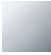

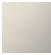




LULU Rain shower with wall fixing 300 x 240 mm - Brushed Durabrass (23kt Gold)

LULU

28 786 710	<ul style="list-style-type: none"> • 450mm projection • rain shower 300 x 240mm • PURE RAIN, max. flow rate 20 l/min (at 3 bar) • Function from: 12 l/min • rosette 78 x 60 mm • 1/2" connection • with anti-scale system • quick clearing • WRAS 1707033 <p>Product change as of 1st April 2024: max. flow 20l/min</p>	<div>  <div> Brushed Durabrass (23kt Gold) <div>28 786 710-28</div> </div> </div>
		<div>  <div> Chrome <div>28 786 710-00 0050</div> </div> </div>
		<div>  <div> Brushed Platinum <div>28 786 710-06 0050</div> </div> </div>
		<div>  <div> Platinum <div>28 786 710-08</div> </div> </div>
		<div>  <div> Brushed Dark Platinum <div>28 786 710-99</div> </div> </div>

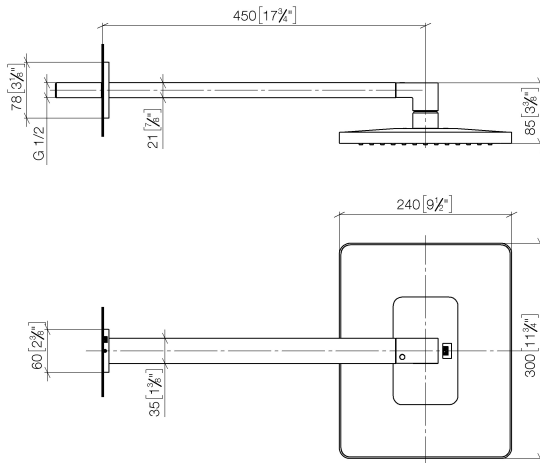
Recommended miscellaneous

<div>  <div> Concealed wall elbow - <ul style="list-style-type: none"> • max. recess depth 163 mm • min. recess depth 90 mm </div> </div>	35 085 970 90
---	---------------

LULU Rain shower with wall fixing 300 x 240 mm - Brushed Durabron (23kt Gold)

LULU

28 786 710
mm [inches]



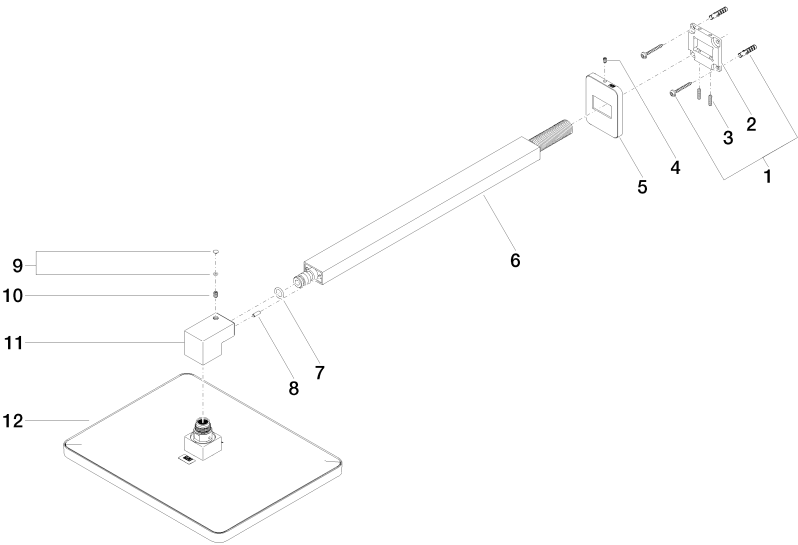
Flow rate chart



Certificates

LGA_29229. WRAS_2212012. LGA_38662.

28 786 710



Spare parts list

No.	Item Number	Name	Quantity used	Delivery time
1	04 30 31 032 00 90	fixing set	1	2
2	09 30 11 160 90	disc	1	2
3	09 31 11 084 90	pin	2	2
4	09 31 11 048 90	pin	1	2
5	09 27 71 019-28	rosette	1	20
6	04 28 22 247 20-28	pipe	1	20
7	90 14 10 011 00 90	seal	1	2
8	09 31 11 040 90	pin	1	2
9	90 31 20 087 00-28	plug	1	20
10	09 31 11 036 90	pin	1	2
11	09 17 01 180-28	connection	1	20
12	04 12 05 062 00-28	shower	1	20