

VAIA Wall-mounted valve cold water without pop-up waste - Brushed Champagne (22kt Gold)

VAIA

30 010 809			
	<ul style="list-style-type: none"> • 151mm projection • fixed spout • adapter with male thread 3/4" • hole diameter 35 mm • rosette Ø 60 mm • max. flow 5.7 l/min • lead-free • This product can help a building meet the requirements of Green Building Rating Systems, e.g. LEED®, BREEAM®, DGNB 	<div>  Brushed Champagne (22kt Gold) </div> <div>  Chrome </div> <div>  Brushed Platinum </div> <div>  Platinum </div> <div>  Dark Chrome </div> <div>  Brushed Durabronze (23kt Gold) </div> <div>  Brushed Bronze </div> <div>  Champagne (22kt Gold) </div> <div>  Brushed Dark Platinum </div>	<div>30 010 809-46</div> <div>30 010 809-00</div> <div>30 010 809-06</div> <div>30 010 809-08</div> <div>30 010 809-19</div> <div>30 010 809-28</div> <div>30 010 809-42</div> <div>30 010 809-47</div> <div>30 010 809-99</div>

VAIA Wall-mounted valve cold water without pop-up waste - Brushed Champagne (22kt Gold)

VAIA

30 010 809
mm [inches]



Flow rate chart

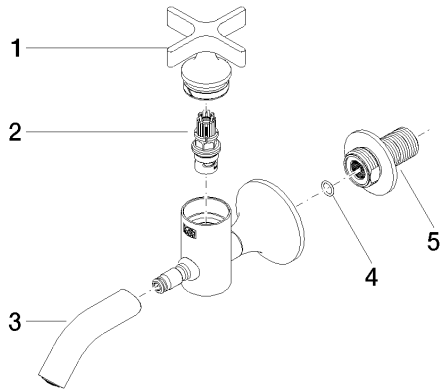


Certificates

LGA_18902.

WRAS_240102003.

30 010 809
Parts for other
finishes can be found
here: [Chrome](#)



Spare parts list

No.	Item Number	Name	Quantity used	Delivery time
1	90 20 66 025 00-46	handle	1	30
2	90 90 03 175 00 90	top	1	2
3	90 28 22 381 00-46	spout	1	30
4	90 14 10 060 00 90	seal	1	2
5	09 24 03 269 90	nipple	1	2