

## TARA ULTRA Two-hole mixer with individual rosettes - Brushed Bronze

TARA ULTRA

32 815 875 Product version from 1/1/2025



- 241mm projection
- pivotable spout 360°
- Optional swivel limiter available with swivel limiter set 12 820 970 90
- air-enriched flow
- max. flow 8 l/min at 3 bar flow pressure
- lead-free
- This product can help a building meet the requirements of Green Building Rating Systems, e.g. LEED®, BREEAM®, DGNB
- WRAS

Operating unit can be positioned freely.

	Brushed Bronze	32 815 875-42
	Chrome	32 815 875-00
	Brushed Platinum	32 815 875-06
	Platinum	32 815 875-08
	Durabronze (23kt Gold)	32 815 875-09
	Dark Chrome	32 815 875-19
	Brushed Durabronze (23kt Gold)	32 815 875-28
	Matte Black	32 815 875-33
	Brushed Champagne (22kt Gold)	32 815 875-46
	Champagne (22kt Gold)	32 815 875-47
	Brushed Chrome	32 815 875-93
	Brushed Dark Platinum	32 815 875-99

### Recommended miscellaneous

**Swivel limitation set -**

12 820 970 90



### Recommended miscellaneous

**Strainer waste with control handle - Brushed Bronze**

10 710 970-42



### Recommended miscellaneous

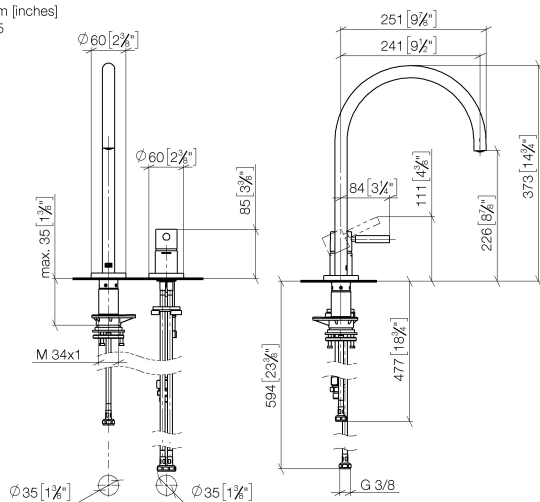
**Dispenser with rosette - Brushed Bronze**

82 444 970-42

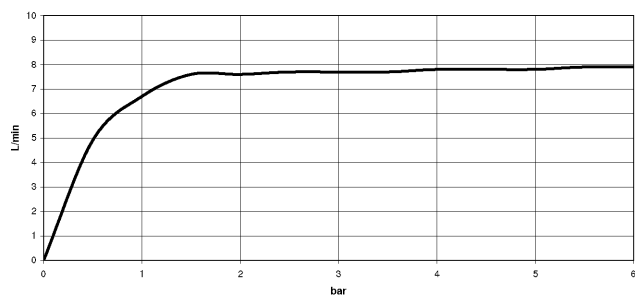


32 815 875 Product version from 1/1/2025

mm [inches]  
1:5



**Flow rate chart**



### Codes & Standards

DIN 4109

ISO 3822

Scottish Water  
Byelaws

UK Water Supply  
Regulations

Ü-Zeichen



## TARA ULTRA Two-hole mixer with individual rosettes - Brushed Bronze

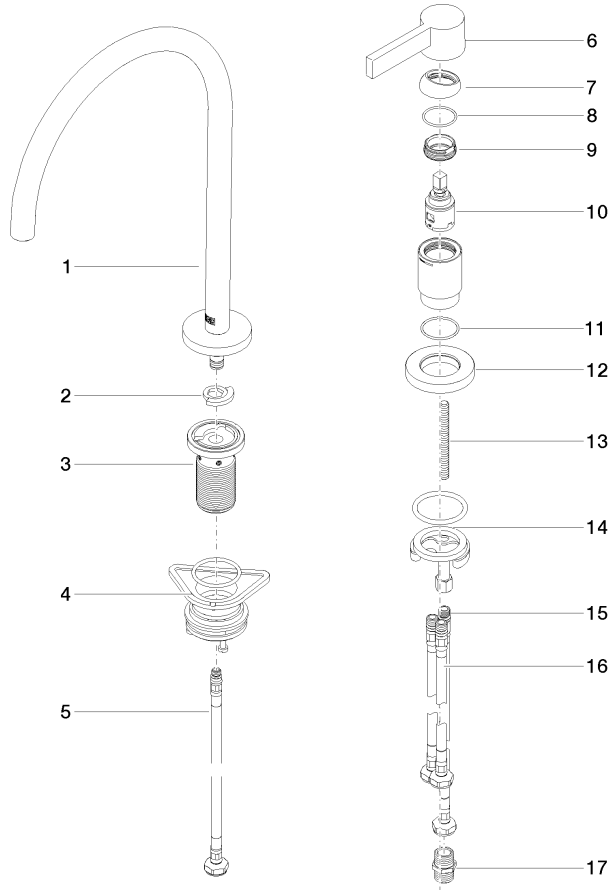
TARA ULTRA

32 815 875 Product version from 1/1/2025

Certificates and sustainability

LGA\_38

WRAS\_240102



## Spare parts list

No.	Item Number	Name	Quantity used	Delivery time
2	12 820 970 90	Swivel limitation set -	1.00	2
13	09 31 11 011 90	pin	1.00	2
14	04 30 11 085 97 90	fixing set	1.00	2
17	90 24 03 250 00 90	nipple	1.00	2
10	90 15 05 042 00 90	cartridge	1.00	2
3	90 30 01 299 00 90	shaft	1.00	2
5	04 30 04 100 00 90	hose	1.00	2
4	04 23 10 044 08 90	fixing set	1.00	2
12	09 27 97 040-42	rosette	1.00	60
9	09 24 04 266 90	nut	1.00	2
16	04 30 04 105 00 90	hose	2.00	2
8	09 14 10 091 90	seal	1.00	2
11	09 14 10 110 90	seal	1.00	2
6	90 20 87 003 00-42	handle	1.00	30
1	90 28 22 377 00-42	spout	1.00	30
7	09 28 30 026-42	cover	1.00	60
15	04 30 04 104 00 90	hose	1.00	2