

## META Single-lever basin mixer with pop-up waste - Dark Chrome

META

33 502 660



- 135mm projection
- fixed spout
- circular, air-enriched flow
- height of mixer 158 mm
- height up to aerator 77 mm
- hole diameter 35 mm
- 2x screw-in M 8 x 1 pressure hose, leak-tested
- max. flow 5.7 l/min
- lead-free
- This product can help a building meet the requirements of Green Building Rating Systems, e.g. LEED®, BREEAM®, DGNB
- WRAS 2003058

Only suitable for basins with an overflow.

|   |                               |               |
|---|-------------------------------|---------------|
|   | Dark Chrome                   | 33 502 660-19 |
|   | Chrome                        | 33 502 660-00 |
|   | Brushed Platinum              | 33 502 660-06 |
|   | Light Gold                    | 33 502 660-26 |
|   | Brushed Light Gold            | 33 502 660-27 |
|   | Matte Black                   | 33 502 660-33 |
|   | Brushed Bronze                | 33 502 660-42 |
|   | Brushed Champagne (22kt Gold) | 33 502 660-46 |
|   | Champagne (22kt Gold)         | 33 502 660-47 |
|   | Brushed Chrome                | 33 502 660-93 |
|  | Brushed Dark Platinum         | 33 502 660-99 |

33 502 660

mm [inches]



### Flow rate chart



### Codes & Standards

EN 817



## META Single-lever basin mixer with pop-up waste - Dark Chrome

---

META

33 502 660

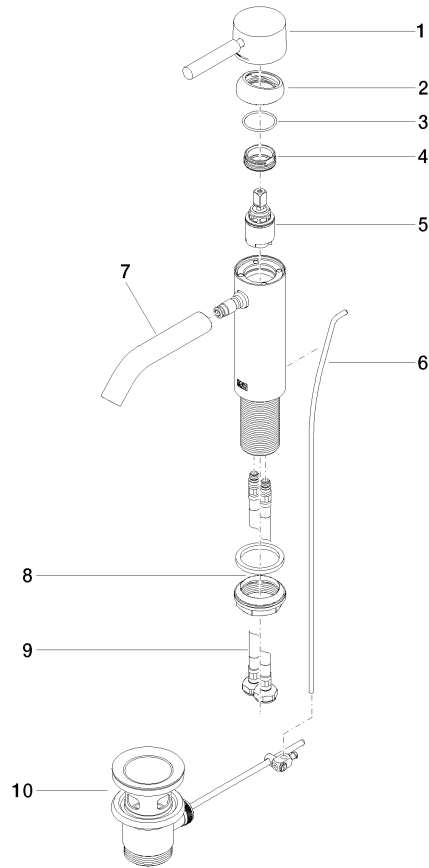
### Certificates

---

DVGW\_DW-  
6506DN0

33 502 660

Parts for other  
finishes can be found  
here: [Chrome](#)





## META Single-lever basin mixer with pop-up waste - Dark Chrome

META

33 502 660

### **Spare parts list**