



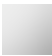

DORNBACHT YAMOU Single-lever basin mixer without pop-up waste -  
Chrome

DORNBACHT  
YAMOU

33 526 831    Product version from 1/1/2023



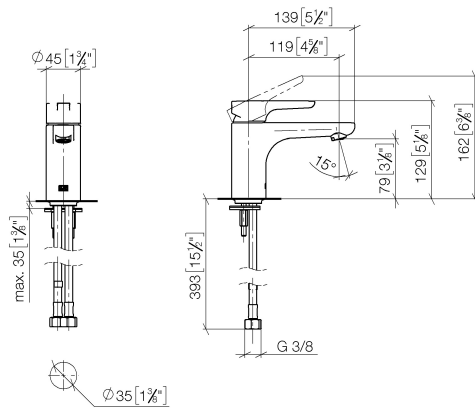
- 120mm projection
- fixed spout
- circular, air-enriched flow
- height of mixer 126 mm
- height up to aerator 80 mm
- hole diameter 35 mm
- 2x screw-in M 8 x 1 pressure hose, leak-tested
- max. flow 6.8 l/min
- lead-free
- max. flow 6.8 l/min
- WRAS

	Chrome	33 526 831-00
	Soft Black	33 526 831-69

# DORNBACHT YAMOU Single-lever basin mixer without pop-up waste - Chrome

DORNBACHT  
YAMOU

33 526 831 Product version from 1/1/2023  
mm [inches]



Flow rate chart



## Codes & Standards

DIN 4109

EN 817

ISO 3822

Scottish Water  
Byelaws

UK Water Supply  
Regulations

Ü-Zeichen

XP P 41-280



DORNBRACHT YAMOU Single-lever basin mixer without pop-up waste -  
Chrome

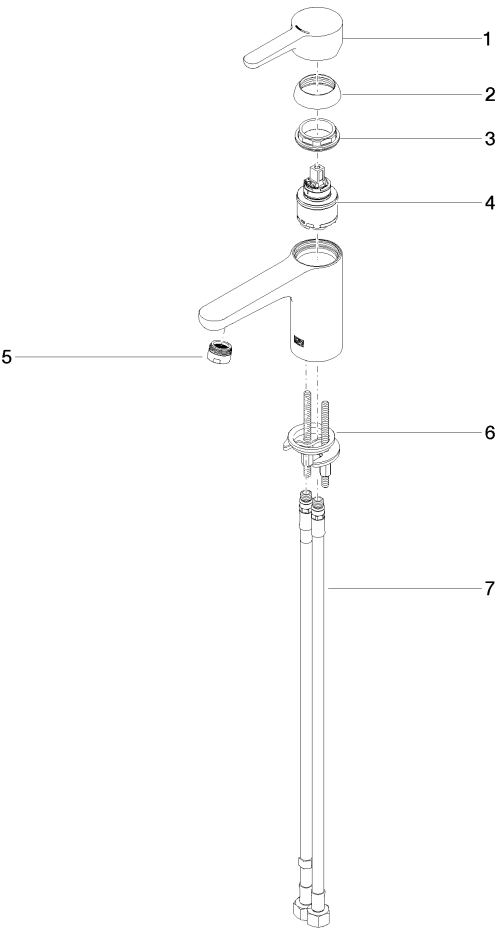
DORNBRACHT  
YAMOU

33 526 831 Product version from 1/1/2023

Certificates and sustainability

AbP_10	ACS_23 ACC NY	WRAS_240104	DVGW_DW- 6506DO0
--------	---------------	-------------	---------------------

33 526 831    Product version from 1/1/2023  
Parts for other finishes can be found here: Soft Black



### Spare parts list

No.	Item Number	Name	Quantity used	Delivery time
3	90 23 10 140 00 90	nut	1.00	2
2	90 21 02 400 00-00	cover	1.00	2
7	90 30 04 110 02 90	hose	1.00	2
1	90 20 83 002 00-00	handle	1.00	2
5	90 23 01 177 00-00	aerator	1.00	2
6	90 30 11 504 00 90	fixing set	1.00	2
4	90 15 05 502 00 90	cartridge	1.00	2