

MEM BAR TAP Single-lever mixer - Brushed Platinum

33 805 682    Product version from 3/1/2023



- 166mm projection
- pivotable spout 360°
- Optional swivel limiter available with swivel limiter set 12 820 970 90
- air-enriched flow
- max. flow 6.3 l/min at 3 bar flow pressure
- lead-free
- This product can help a building meet the requirements of Green Building Rating Systems, e.g. LEED®, BREEAM®, DGNB
- WRAS

	Brushed Platinum	33 805 682-06
	Chrome	33 805 682-00
	Platinum	33 805 682-08
	Durabrass (23kt Gold)	33 805 682-09
	Dark Chrome	33 805 682-19
	Brushed Durabrass (23kt Gold)	33 805 682-28
	Matte Black	33 805 682-33
	Brushed Champagne (22kt Gold)	33 805 682-46
	Champagne (22kt Gold)	33 805 682-47
	Brushed Chrome	33 805 682-93
	Brushed Dark Platinum	33 805 682-99


Recommended miscellaneous

	<b>Swivel limitation set -</b>	12 820 970 90
---	--------------------------------	---------------

Recommended miscellaneous

	<b>Dispenser without rosette - Brushed Platinum</b>	82 424 970-06
---	---	---------------

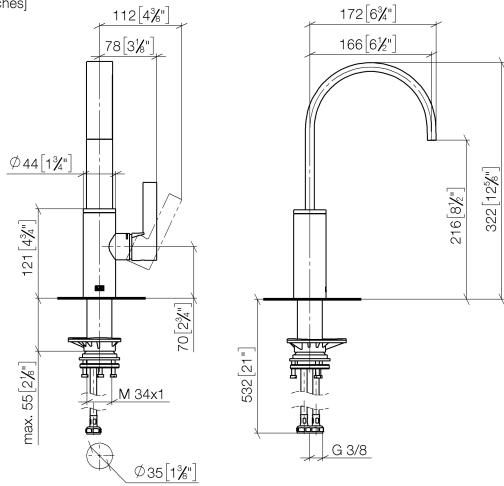
Recommended miscellaneous

	<b>Strainer waste with control handle - Brushed Platinum</b>	10 712 970-06
---	--	---------------

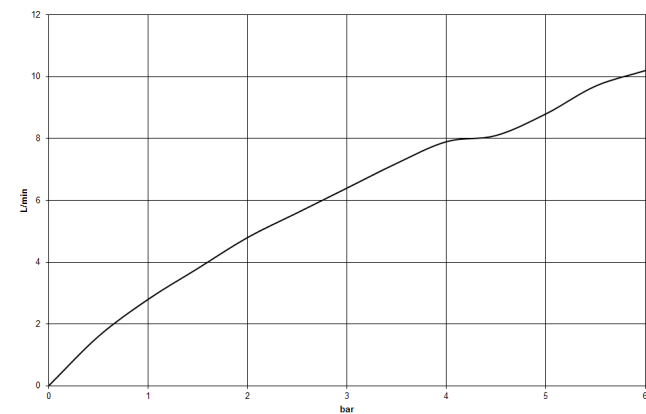
**MEM BAR TAP Single-lever mixer - Brushed Platinum**

33 805 682 Product version from 3/1/2023

mm [inches]



**Flow rate chart**



**Codes & Standards**

DIN 4109

ISO 3822

Scottish Water  
Byelaws

UK Water Supply  
Regulations

Ü-Zeichen



## MEM BAR TAP Single-lever mixer - Brushed Platinum

---

33 805 682 Product version from 3/1/2023

### Certificates

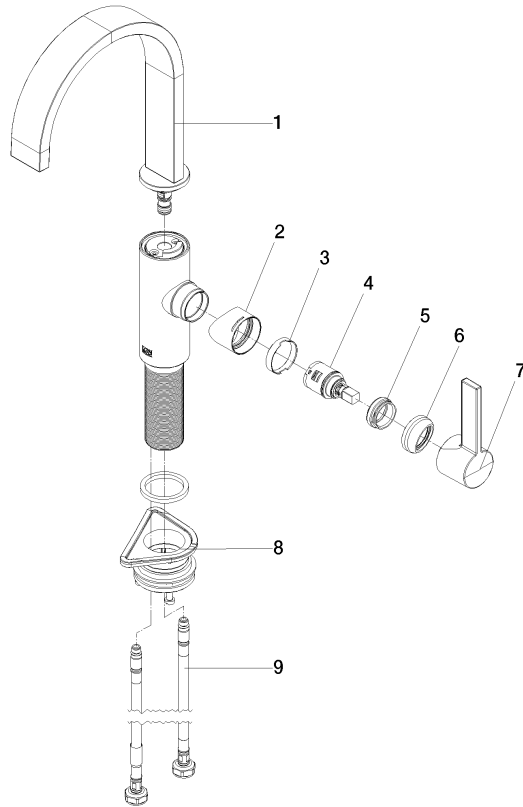
---

LGA\_38

WRAS\_240202

# MEM BAR TAP Single-lever mixer - Brushed Platinum

33 805 682    Product version from 3/1/2023



## Spare parts list

No.	Item Number	Name	Quantity used	Delivery time
1	90 28 22 282 00-06	spout	1	-
Spare part can no longer be ordered, please order the replacement item				
2	09 19 86 012-06	cover	1	60
3	90 23 10 128 00 90	nut	1	2
4	90 15 05 042 00 90	cartridge	1	2
5	09 24 04 266 90	nut	1	2
6	90 28 30 052 00-06	cover	1	10
7	90 20 86 004 00-06	handle	1	10
8	04 23 10 044 08 90	fixing set	1	2
9	04 30 04 101 00 90	hose	2	2