

## ELIO Single-lever mixer Pull-out - Platinum

ELIO

33 840 790



- 235mm projection
- pivotable spout 360°
- air-enriched flow
- height of mixer 337 mm
- height up to aerator 300 mm
- hole diameter 35 mm
- fabric braided hose 1500 mm
- max. flow 8.8 l/min at 3 bar flow pressure
- lead-free
- This product can help a building meet the requirements of Green Building Rating Systems, e.g. LEED®, BREEAM®, DGNB

Intrinsic protection against back flow.

	Platinum	33 840 790-08
	Chrome	33 840 790-00
	Brushed Platinum	33 840 790-06
	Dark Chrome	33 840 790-19
	Brushed Durabronze (23kt Gold)	33 840 790-28
	Brushed Champagne (22kt Gold)	33 840 790-46
	Champagne (22kt Gold)	33 840 790-47
	Brushed Chrome	33 840 790-93
	Brushed Dark Platinum	33 840 790-99

### Recommended miscellaneous

**Strainer waste with control handle - Platinum** 10 712 970-08

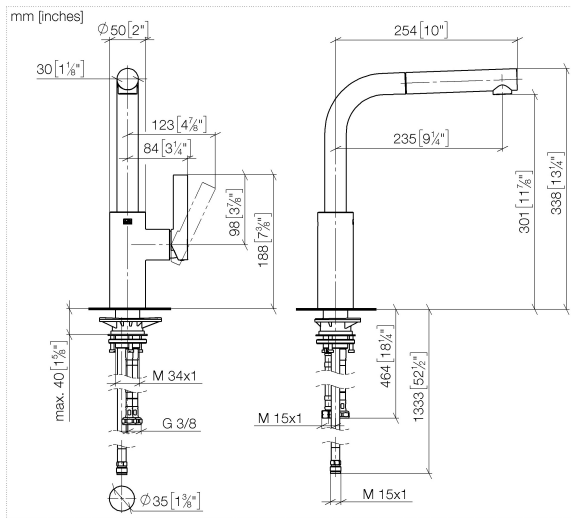


### Recommended miscellaneous

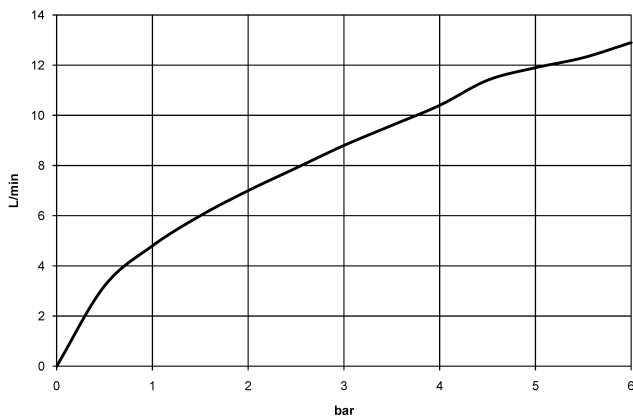
**Dispenser without rosette - Platinum** 82 424 970-08



33 840 790



**Flow rate chart**



**Codes & Standards**

DIN 4109

EN 1717

Executive Order  
no. 1007

ISO 3822

Ü-Zeichen



## ELIO Single-lever mixer Pull-out - Platinum

---

ELIO

33 840 790

### Certificates

---

Belgaqua\_22\_277\_2 LGA\_19

GDV\_0400

33 840 790

Product version up to 12/31/2013

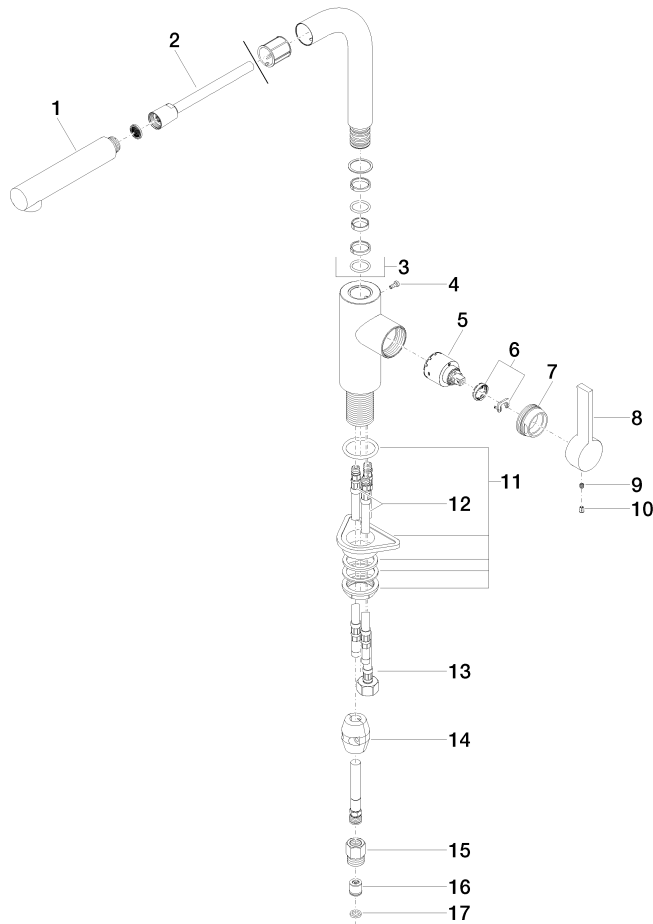
Product version from 12/31/2013 to 5/15/2020

Product version from 5/15/2020 to 5/5/2021

Product version from 5/5/2021 to 6/1/2022

**Product version from 6/1/2022**

Parts for other  
finishes can be found  
here: [Chrome](#)





## ELIO Single-lever mixer Pull-out - Platinum

ELIO

33 840 790

### Spare parts list

Product version up to 12/31/2013

Product version from 12/31/2013 to 5/15/2020

Product version from 5/15/2020 to 5/5/2021

Product version from 5/5/2021 to 6/1/2022

### Product version from 6/1/2022

No.	Item Number	Name	Quantity used	Delivery time
	04 12 11 106 00-08	shower	18	40