

## TARA ULTRA Profi single-lever mixer - Brushed Platinum







TARA ULTRA

33 860 875



- 240mm projection
- pivotable 360°
- air-enriched flow and spray flow
- height of mixer 685 mm
- height up to aerator 129 mm
- hole diameter 35 mm
- sprayface with anti-scaling system
- max. flow 8 l/min at 3 bar flow pressure
- lead-free
- This product can help a building meet the requirements of Green Building Rating Systems, e.g. LEED®, BREEAM®, DGNB

Intrinsic protection against back flow.

|  |                       |               |
|--|-----------------------|---------------|
|  | Brushed Platinum      | 33 860 875-06 |
|  | Chrome                | 33 860 875-00 |
|  | Platinum              | 33 860 875-08 |
|  | Dark Chrome           | 33 860 875-19 |
|  | Brushed Chrome        | 33 860 875-93 |
|  | Brushed Dark Platinum | 33 860 875-99 |

### Recommended miscellaneous

**Strainer waste with control handle** 10 712 970-06  
- Brushed Platinum

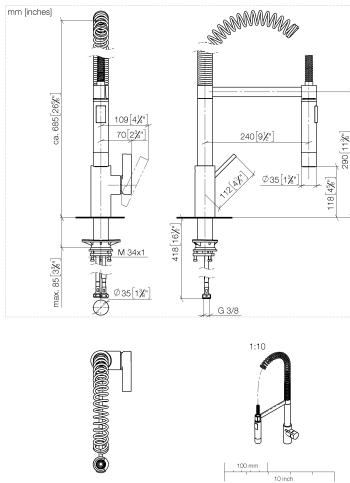


### Recommended miscellaneous

**Dispenser without rosette -** 82 424 970-06  
**Brushed Platinum**



33 860 875



### Flow rate chart



## Codes & Standards

DIN 4109

EN 1717

ISO 3822

Ü-Zeichen



## TARA ULTRA Profi single-lever mixer - Brushed Platinum

---

TARA ULTRA

33 860 875

### Certificates

---

Belgaqua\_22\_277\_2 LGA\_18

33 860 875

Product version up to 7/24/2018

Product version from 7/24/2018 to 5/15/2020

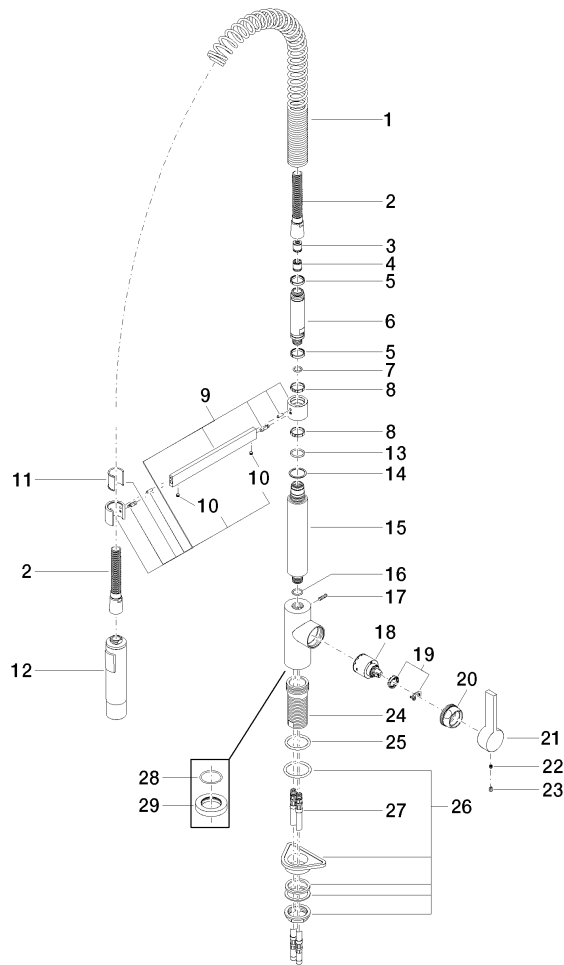
Product version from 5/15/2020 to 5/16/2020

Product version from 5/15/2020 to 5/3/2021

Product version from 5/3/2021

**Product version from 6/1/2022**

Parts for other  
finishes can be found  
here: [Chrome](#)





## TARA ULTRA Profi single-lever mixer - Brushed Platinum

TARA ULTRA

33 860 875

### Spare parts list

Product version up to 7/24/2018

Product version from 7/24/2018 to 5/15/2020

Product version from 5/15/2020 to 5/16/2020

Product version from 5/15/2020 to 5/3/2021

Product version from 5/3/2021

### Product version from 6/1/2022

| No. | Item Number     | Name   | Quantity used | Delivery time |
|-----|-----------------|--------|---------------|---------------|
|     | 09 16 02 035 90 | spring | 33            | 2             |