

ENO Single-lever mixer Pull-out with spray function - Platinum

ENO

33 870 760



- 225mm projection
- pivotable spout 130°
- air-enriched flow and spray flow
- height of mixer 167 mm
- height up to aerator 137 mm
- hole diameter 35 mm
- fabric braided hose 1500 mm
- max. flow 8.3 l/min at 3 bar flow pressure
- lead-free
- This product can help a building meet the requirements of Green Building Rating Systems, e.g. LEED®, BREEAM®, DGNB

Intrinsic protection against back flow.

| | | |
|--|--------------------------------|---------------|
|  | Platinum | 33 870 760-08 |
|  | Chrome | 33 870 760-00 |
|  | Brushed Platinum | 33 870 760-06 |
|  | Dark Chrome | 33 870 760-19 |
|  | Brushed Durabronze (23kt Gold) | 33 870 760-28 |
|  | Brushed Champagne (22kt Gold) | 33 870 760-46 |
|  | Champagne (22kt Gold) | 33 870 760-47 |
|  | Brushed Chrome | 33 870 760-93 |
|  | Brushed Dark Platinum | 33 870 760-99 |

Recommended miscellaneous

Strainer waste with control handle - Platinum 10 712 970-08

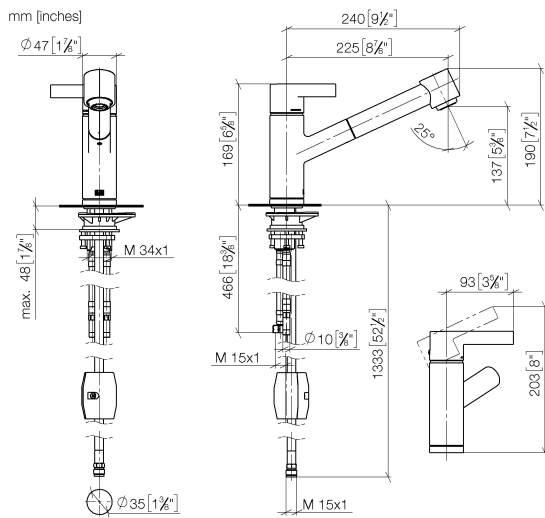


Recommended miscellaneous

Dispenser without rosette - Platinum 82 424 970-08



33 870 760



Flow rate chart



Codes & Standards

| | | | |
|----------|-----------|------------|-----------------------------|
| DIN 4109 | EN 1717 | EN 817 | Executive Order no. 1007 |
| ISO 3822 | Ü-Zeichen | VA-Zeichen | |



ENO Single-lever mixer Pull-out with spray function - Platinum

ENO

33 870 760

Certificates

GDV_0400

Belgaqua_22_277_2 ETA_20

LGA_19

33 870 760

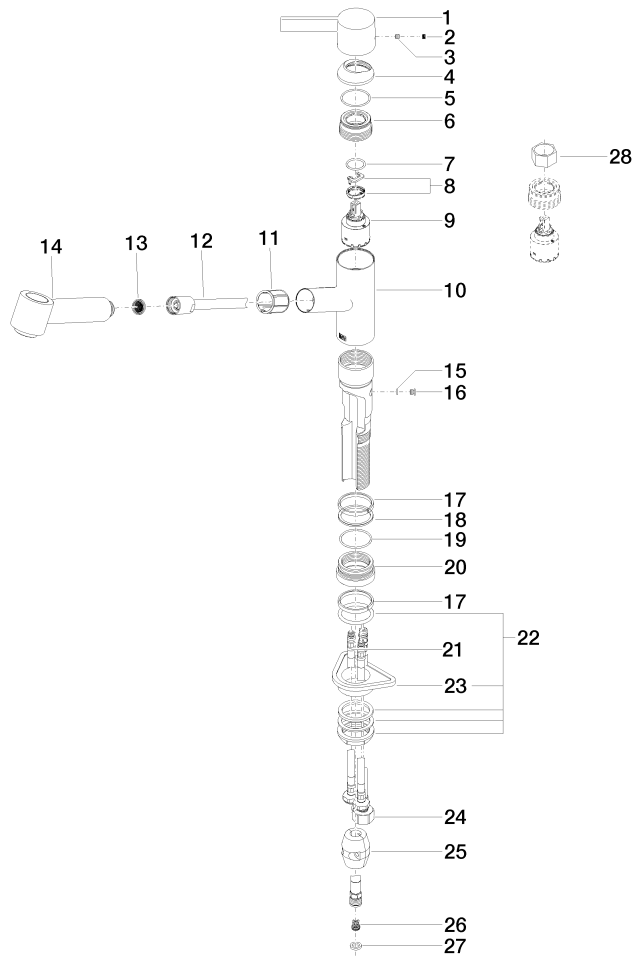
Product version up to 12/31/2013

Product version from 1/1/2014 to 1/1/2019

Product version from 1/1/2019 to 5/1/2021

Product version from 5/1/2021

Parts for other
finishes can be found
here: [Chrome](#)





ENO Single-lever mixer Pull-out with spray function - Platinum

ENO

33 870 760

Spare parts list

Product version up to 12/31/2013

Product version from 1/1/2014 to 1/1/2019

Product version from 1/1/2019 to 5/1/2021

Product version from 5/1/2021

| No. | Item Number | Name | Quantity used | Delivery time |
|-----|-----------------|--------|---------------|---------------|
| | 09 20 76 001-08 | handle | 30 | 40 |