


35 050 970 90




- red brass, lead-free
- 2x female thread 1/2" connections
- dust cover
- anti-water packing
- soundproofing
- WRAS

Recommended miscellaneous

	<b>Extension 25 mm -</b>	12 055 970 90
		

Recommended miscellaneous

	<b>Rosette - Chrome</b>	12 720 660-00
	•with round rosette	

Recommended miscellaneous

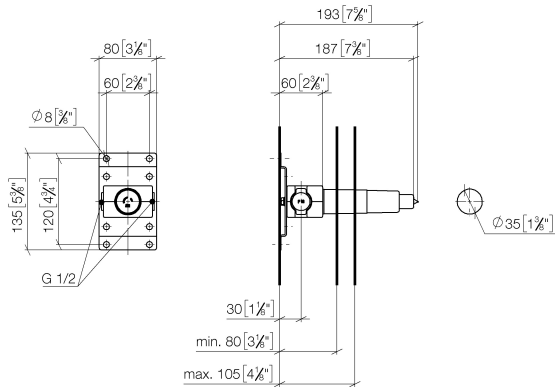
	<b>Rosette - Chrome</b>	12 720 980-00
	•with angular rosette	

### Concealed wall mounting -

SERIES-VARIOUS

35 050 970 90

mm [inches]



## Codes & Standards

EN 817

## Scottish Water Byelaws

## UK Water Supply Regulations

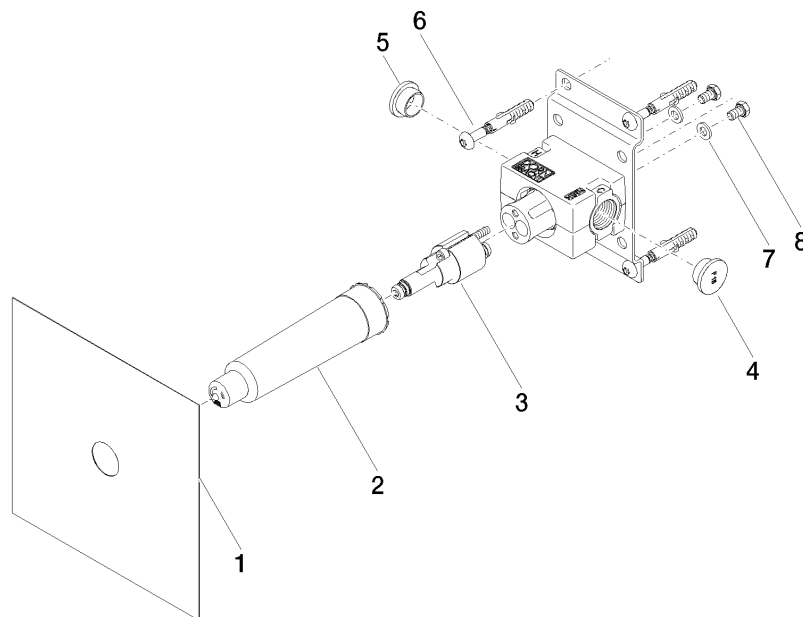
## Certificates and sustainability

DVGW\_DW-  
6512DN0

WRAS\_2101

WRAS\_2011

35 050 970 90



## Spare parts list

No.	Item Number	Name	Quantity used	Delivery time
2	09 21 02 173 90	cap	1.00	2
7	09 30 11 144 90	disc	2.00	2
6	04 30 31 024 01 90	fixing set	2.00	2
3	90 31 20 116 00 90	plug	1.00	2
4	09 31 20 094 90	plug	1.00	2
5	09 31 20 093 90	plug	1.00	2
8	09 30 30 049 90	screw	2.00	2
1	04 14 03 072 01 90	gasket kit	1.00	2