


35 511 970 90




- red brass, lead-free
- 2x back flow preventer
- 2x female thread 3/4" connections
- 1x female thread 3/4" outlet for additional valves
- 1x female thread 3/4" outlet, right/left alternatively
- 2x dust cover
- 2x anti-water packing
- soundproofing
- gauge 120 mm
- suitable for xGRID (when using installation track + 12 mm recess depth)
- WRAS


Recommended miscellaneous

	Extension 28 mm -	12 177 970 90
		


Recommended miscellaneous

	xGRID Attachment set for integrating in the dry wall construction -	12 340 970 90
		

Recommended miscellaneous

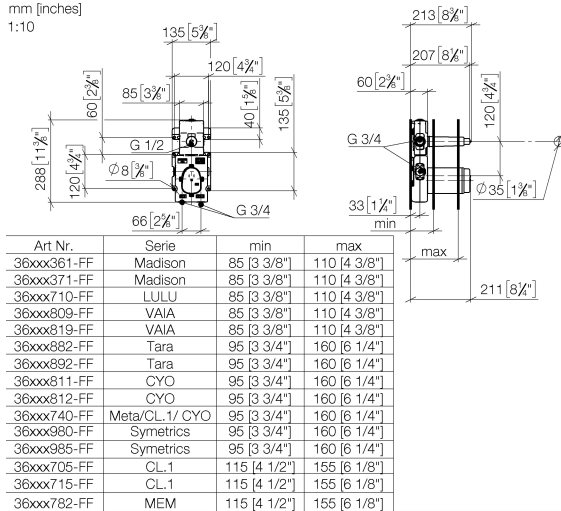
	Extension 46 mm -	12 178 970 90
		

Required miscellaneous

	xGRID Installation track 555 mm -	12 360 970 90
		

35 511 970 90

mm [inches]  
1:10



## Codes & Standards

EN 1111

EN 1717

Scottish Water  
Byelaws

UK Water Supply  
Regulations

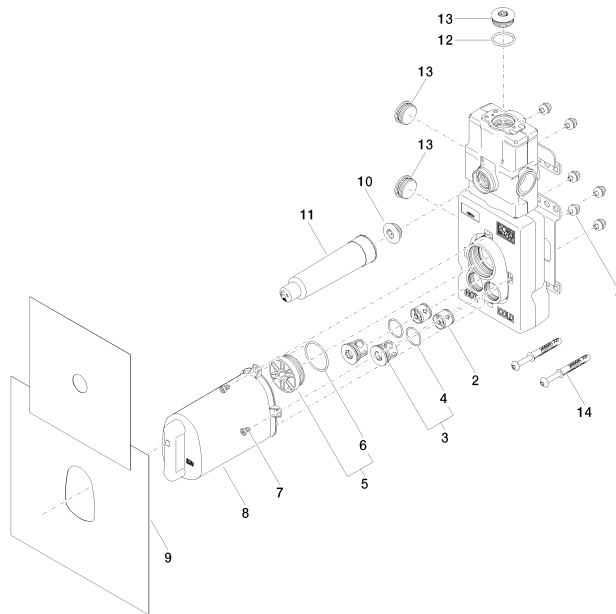
XP P 41-280

## Certificates and sustainability

Belgaqua\_21-031-2 WRAS\_2011

ACS\_21 ACC LY

DVGW\_DW-  
6512DN0



## Spare parts list

No.	Item Number	Name	Quantity used	Delivery time
4	09 14 10 098 90	seal	2.00	2
5	04 31 20 100 00 90	plug	1.00	2
14	04 30 31 054 00 90	fixing set	2.00	2
1	90 23 01 091 00 90	set	6.00	2
11	09 21 02 173 90	cap	1.00	2
3	04 21 34 077 00 90	nipple	2.00	2
2	90 23 01 045 00 90	back-flow preventer	2.00	2
6	09 14 10 111 90	seal	1.00	2
12	09 14 10 009 90	seal	1.00	2
13	09 31 20 003 90	plug	3.00	2
7	09 30 30 112 90	screw	4.00	2
10	04 31 20 006 00 90	plug	1.00	2
8	04 21 02 174 01 90	cap	1.00	2
9	04 14 03 073 05 90	gasket kit	1.00	2