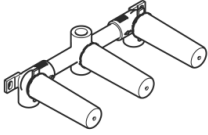


Concealed wall-mounted mixer centred spout -

35 707 970 90

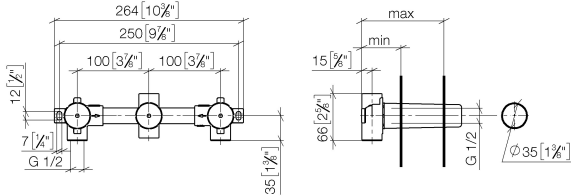


- 3x dust cover
- 2x female thread 1/2" connections
- 1x female thread 1/2" outlet
- 3x sealing plug 1/2"
- gauge 100 mm
- lead-free

Concealed wall-mounted mixer centred spout -

35 707 970 90

mm [inches]



	min	max
Madison	55 2 1/8"	115 4 1/2"
Square	55 2 1/8"	110 4 3/8"
Circle	55 2 1/8"	130 5 1/8"
Vaia	60 2 3/8"	132 5 1/4"
Domicil	60 2 1/2"	100 3 7/8"
Deque	70 2 3/4"	135 5 3/8"
Gentle	70 2 3/4"	135 5 3/8"
La Fleur	70 2 3/4"	135 5 3/8"
Selv	70 2 3/4"	135 5 3/8"
Supernova	70 2 3/4"	135 5 3/8"
Symetrics	70 2 3/4"	135 5 3/8"
Tara	70 2 3/4"	135 5 3/8"
CL_2	93 3 5/8"	115 4 1/2"
MEM	93 3 5/8"	138 5 3/8"
CL_1	93 3 5/8"	138 5 3/8"
La Fleur Cl.	102 4 1"	144 5 5/8"

Codes & Standards

DIN 4109	EN 200	ISO 3822	Ü-Zeichen
VA-Zeichen	XP P 41-280		

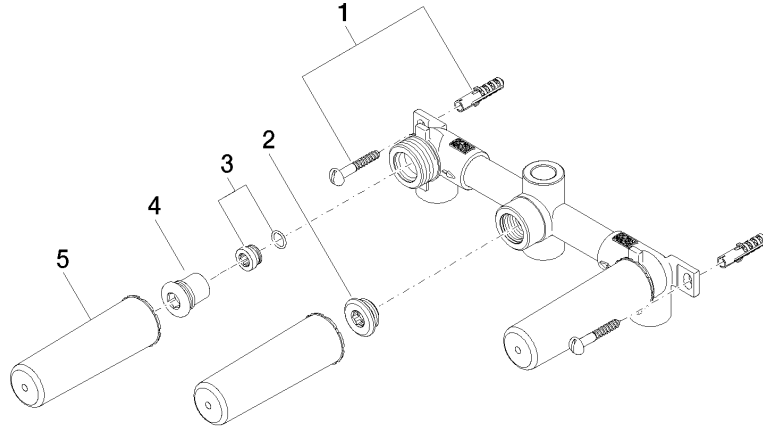
Certificates

LGA_19	ACS_20 ACC LY	ETA_19
--------	---------------	--------

Concealed wall-mounted mixer centred spout -

35 707 970 90

Product version from 4/1/2022





Concealed wall-mounted mixer centred spout -

35 707 970 90

Spare parts list

Product version from 4/1/2022

No.	Item Number	Name	Quantity used	Delivery time
	04 30 31 024 01 90	fixing set	10	2