

Concealed wall-mounted single-lever mixer -

SERIES-VARIOUS

35 860 970 90

Product version up to 11/11/2021



- 2x female thread 1/2" connections
- 1x female thread 1/2" outlet for wall spout
- 1x female thread 1/2" outlet
- 2x dust cover
- anti-water packing
- soundproofing
- gauge 100 mm
- WRAS

Recommended miscellaneous

| | | |
|--|---|---------------|
| | Extension 20 mm - | 12 869 970 90 |
| | <ul style="list-style-type: none"> •Not suitable for combining with META PURE (36 86X 664-FF). | |

Recommended miscellaneous

| | | |
|--|--|---------------|
| | Extension 20 mm - | 12 870 970 90 |
| | <ul style="list-style-type: none"> •Can only be combined with exposed trim parts 36 86X 664-FF. | |

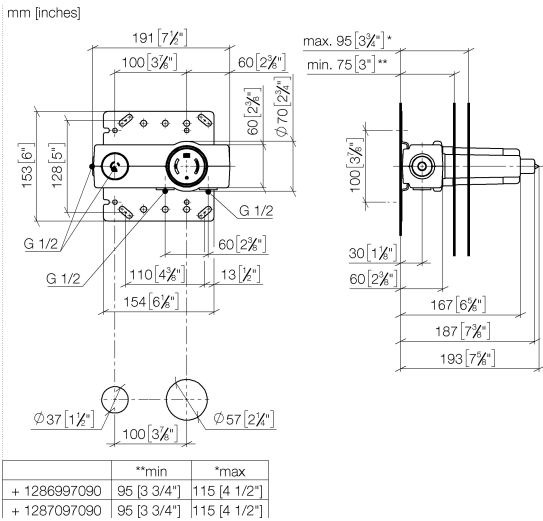
Recommended miscellaneous

| | | |
|--|---|---------------|
| | Adapter for reversed water connections - | 12 880 970 90 |
| | <ul style="list-style-type: none"> •Not suitable for combining with META PURE (36 86X 664-FF). | |

Concealed wall-mounted single-lever mixer -

SERIES-VARIOUS

35 860 970 90 Product version up to 11/11/2021



Codes & Standards

| | | | |
|--------|---------------------------|--------------------------------|-------------|
| EN 817 | Scottish Water Byelaws | UK Water Supply Regulations | XP P 41-280 |
|--------|---------------------------|--------------------------------|-------------|

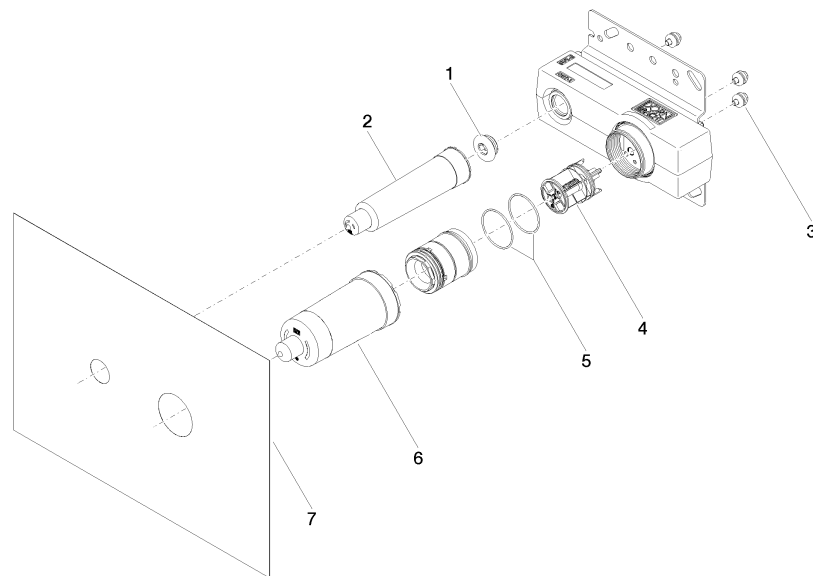
Certificates and sustainability

| | | | |
|-----------|---------------|---------------------|-----------|
| WRAS_2010 | ACS_21 ACC LY | DVGW_DW- 6512DN0 | WRAS_2107 |
|-----------|---------------|---------------------|-----------|

Concealed wall-mounted single-lever mixer -

SERIES-VARIOUS

35 860 970 90 Product version up to 11/11/2021



Spare parts list

| No. | Item Number | Name | Quantity used | Delivery time |
|-----|--------------------|------------|---------------|---------------|
| 5 | 09 14 10 190 90 | seal | 2.00 | 2 |
| 1 | 04 31 20 006 00 90 | plug | 1.00 | 2 |
| 6 | 09 21 02 176 90 | cap | 1.00 | 60 |
| 4 | 90 31 20 107 00 90 | plug | 1.00 | 2 |
| 3 | 90 23 01 091 00 90 | set | 3.00 | 2 |
| 2 | 09 21 02 173 90 | cap | 1.00 | 2 |
| 7 | 04 14 03 074 01 90 | gasket kit | 1.00 | 2 |