

Concealed single-lever mixer with cover plate with integrated shower connection - Brushed Durabrass (23kt Gold)

SERIES SPECIFIC

36 046 970

Product version from 4/1/2024



- cover plate 80 x 80 mm

Intrinsic protection against back flow.

Intrinsic protection against back flow.

	Brushed Durabrass (23kt Gold)	36 046 970-28
	Chrome	36 046 970-00
	Brushed Platinum	36 046 970-06
	Platinum	36 046 970-08
	Dark Chrome	36 046 970-19
	Brushed Light Gold	36 046 970-27
	Matte Black	36 046 970-33
	Brushed Champagne (22kt Gold)	36 046 970-46
	Champagne (22kt Gold)	36 046 970-47
	Brushed Chrome	36 046 970-93
	Brushed Dark Platinum	36 046 970-99

Required miscellaneous



- Concealed wall mounting -**

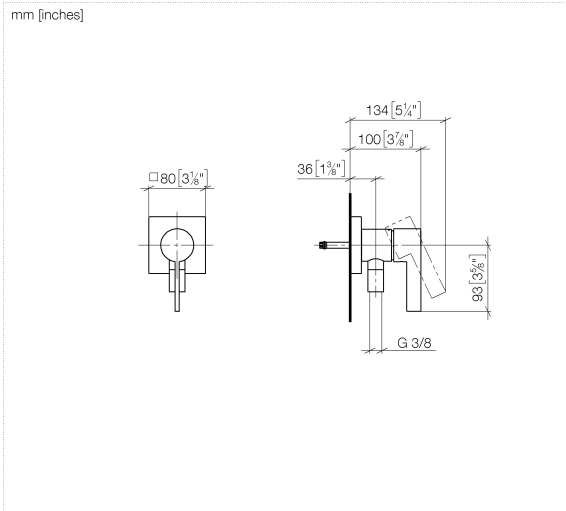
35 050 970 90

- min. recess depth 80 mm
 - max. recess depth 105 mm

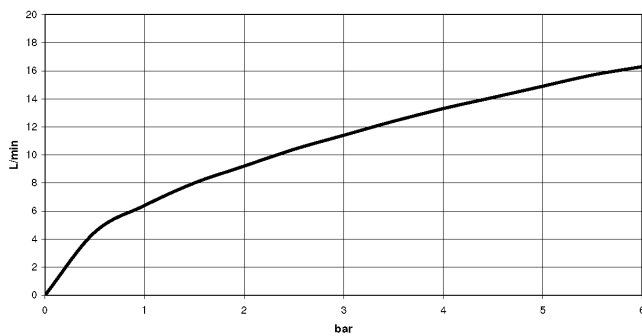
Concealed single-lever mixer with cover plate with integrated shower connection - Brushed Durabron (23kt Gold)

SERIES SPECIFIC

36 046 970 Product version from 4/1/2024



Flow rate chart



Codes & Standards

DIN 4109

ISO 3822

Ü-Zeichen



Concealed single-lever mixer with cover plate with integrated shower connection - Brushed Durabron (23kt Gold)

SERIES SPECIFIC

36 046 970 Product version from 4/1/2024

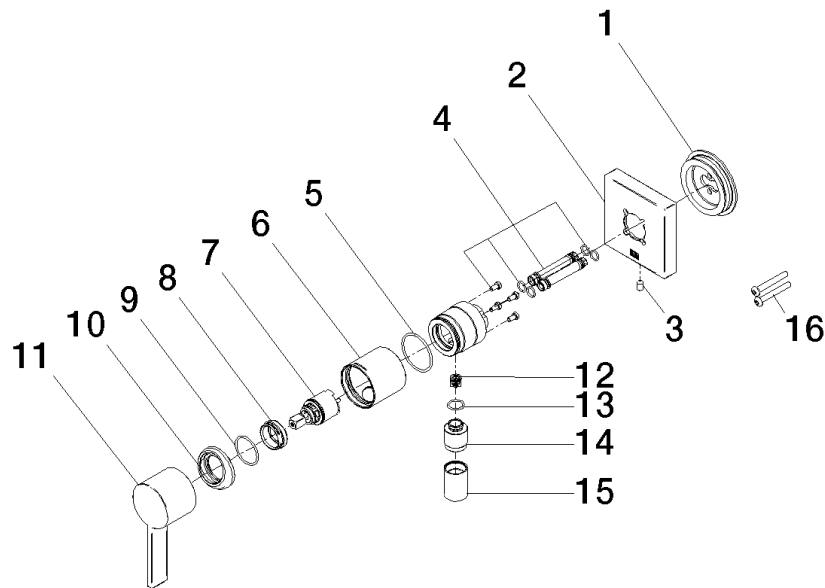
Certificates and sustainability

LGA_38

Concealed single-lever mixer with cover plate with integrated shower connection - Brushed Durabronz (23kt Gold)

SERIES SPECIFIC

36 046 970 Product version from 4/1/2024



Spare parts list

No.	Item Number	Name	Quantity used	Delivery time
	10 09 28 30 041-28	cover	1.00	20
	5 09 14 10 111 90	seal	1.00	2
	6 90 18 40 320 00-28	sleeve	1.00	-
Spare part can no longer be ordered, please order the replacement item				
	1 90 30 11 232 00 90	disc	1.00	2
	2 90 27 97 046 00-28	rosette	1.00	20
	15 90 21 02 069 00-28	cover	1.00	20
	3 09 31 11 144 90	pin	1.00	2
	12 09 23 01 131 90	back-flow preventer	1.00	2
	9 09 14 10 120 90	seal	1.00	2
	16 90 30 30 229 00 90	screw	2.00	2
	7 90 15 05 044 00 90	cartridge	1.00	2
	8 09 24 04 266 90	nut	1.00	2
	4 90 24 01 046 00 90	connection	2.00	2
	13 90 14 10 021 00 90	seal	1.00	2
	14 09 24 03 281-28	nipple	1.00	20
	11 09 20 97 063-00	handle	1.00	10