

Concealed single-lever mixer with cover plate - Brushed Platinum

SERIES SPECIFIC

36 060 670 Product version from 6/1/2024



- cover plate 80 x 80 mm
- WRAS

| | | |
|---|-------------------------------|---------------|
|  | Brushed Platinum | 36 060 670-06 |
|  | Chrome | 36 060 670-00 |
|  | Platinum | 36 060 670-08 |
|  | Dark Chrome | 36 060 670-19 |
|  | Brushed Light Gold | 36 060 670-27 |
|  | Brushed Durabrass (23kt Gold) | 36 060 670-28 |
|  | Matte Black | 36 060 670-33 |
|  | Brushed Champagne (22kt Gold) | 36 060 670-46 |
|  | Champagne (22kt Gold) | 36 060 670-47 |
|  | Brushed Chrome | 36 060 670-93 |
|  | Brushed Dark Platinum | 36 060 670-99 |

Required miscellaneous

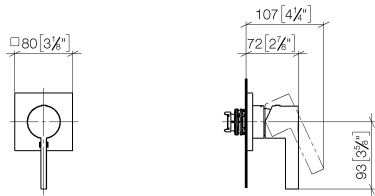


- Concealed wall-mounted single-lever mixer -

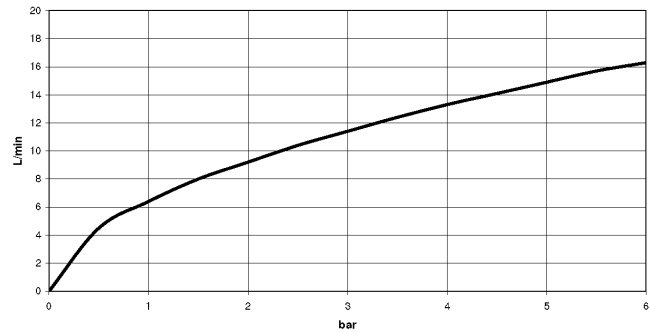
35 860 970 90

 - max. recess depth 95 mm
 - min. recess depth 80 mm

mm [inches]



Flow rate chart



Codes & Standards

| | | | |
|----------|----------|------------------------|-----------------------------|
| DIN 4109 | ISO 3822 | Scottish Water Byelaws | UK Water Supply Regulations |
|----------|----------|------------------------|-----------------------------|

Ü-Zeichen



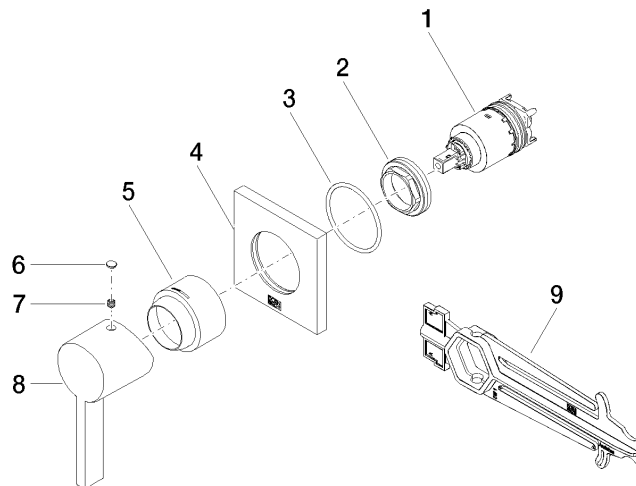
Concealed single-lever mixer with cover plate - Brushed Platinum

SERIES SPECIFIC

36 060 670 Product version from 6/1/2024

Certificates and sustainability

WRAS_2107 LGA_29



Spare parts list

| No. | Item Number | Name | Quantity used | Delivery time |
|-----|----------------------|-----------|---------------|---------------|
| | 4 09 27 78 048-06 | rosette | 1.00 | 10 |
| | 6 90 31 20 087 00-06 | plug | 1.00 | 10 |
| | 5 09 11 02 530-06 | cover | 1.00 | 10 |
| | 8 09 20 67 004-06 | handle | 1.00 | 10 |
| | 1 90 15 05 064 01 90 | cartridge | 1.00 | 2 |
| | 2 09 24 04 105 90 | nut | 1.00 | 2 |
| | 3 90 14 10 049 00 90 | seal | 1.00 | 2 |
| | 7 90 31 11 112 00 90 | pin | 1.00 | 2 |
| | 9 90 30 09 064 00 90 | key | 1.00 | 2 |