

VAIA Concealed single-lever mixer with cover plate - Brushed Dark Brass
VAIA

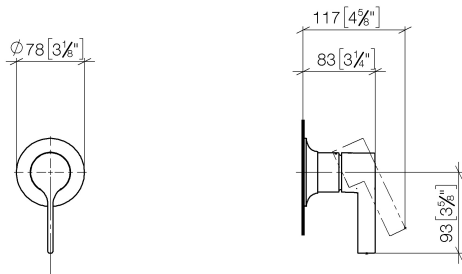
36 060 809
Product version from 4/1/2025

- cover plate 80 x 80 mm

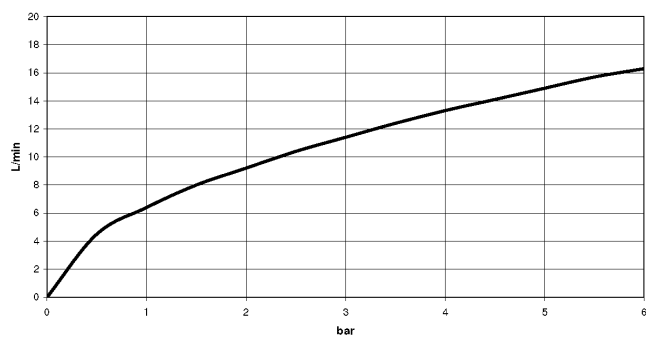


| | | |
|---|--------------------------------|---------------|
|  | Brushed Dark Brass | 36 060 809-39 |
|  | Chrome | 36 060 809-00 |
|  | Brushed Platinum | 36 060 809-06 |
|  | Platinum | 36 060 809-08 |
|  | Dark Chrome | 36 060 809-19 |
|  | Brushed Durabronze (23kt Gold) | 36 060 809-28 |
|  | Brushed Bronze | 36 060 809-42 |
|  | Brushed Champagne (22kt Gold) | 36 060 809-46 |
|  | Champagne (22kt Gold) | 36 060 809-47 |
|  | Brushed Dark Platinum | 36 060 809-99 |

mm [inches]



Flow rate chart



Codes & Standards

DIN 4109

ISO 3822

Ü-Zeichen



VAIA Concealed single-lever mixer with cover plate - Brushed Dark Brass

VAIA

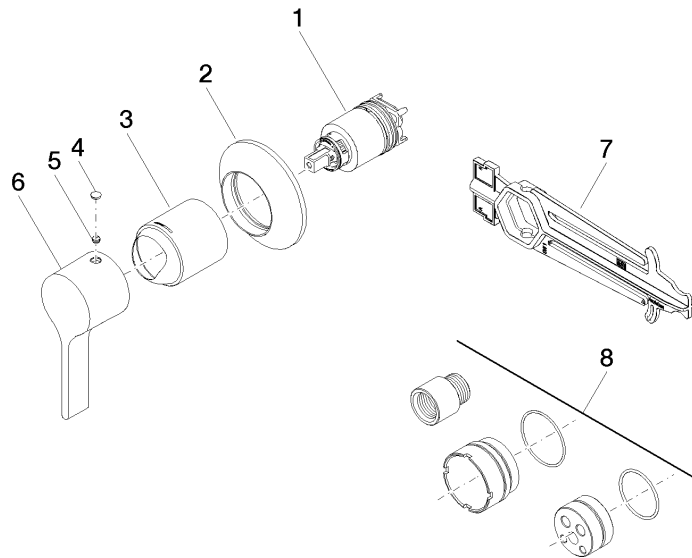
36 060 809 Product version from 4/1/2025

Certificates and sustainability

LGA_29

36 060 809 Product version from 4/1/2025

Parts for other finishes can be found here: [Chrome](#)



Spare parts list

| No. | Item Number | Name | Quantity used | Delivery time |
|-----|--------------------|-------------------|---------------|---------------|
| 8 | 12 869 970 90 | Extension 20 mm - | 1.00 | 2 |
| 6 | 09 20 80 021-39 | handle | 1.00 | 60 |
| 3 | 09 11 02 293-39 | cover | 1.00 | 60 |
| 1 | 90 15 05 064 01 90 | cartridge | 1.00 | 2 |
| 7 | 90 30 09 064 00 90 | key | 1.00 | 2 |
| 5 | 90 31 11 063 00 90 | pin | 1.00 | 2 |
| 4 | 90 31 20 087 00-39 | plug | 1.00 | 30 |
| 2 | 90 27 80 032 00-39 | rosette | 1.00 | 30 |