

Concealed single-lever mixer with diverter - Brushed Champagne (22kt Gold)

36 120 660 Product version from 2/20/2020



- automatic diverter
- cover plate Ø 150 mm
- WRAS

	Brushed Champagne (22kt Gold)	36 120 660-46
	Chrome	36 120 660-00
	Brushed Platinum	36 120 660-06
	Platinum	36 120 660-08
	Dark Chrome	36 120 660-19
	Light Gold	36 120 660-26
	Brushed Light Gold	36 120 660-27
	Brushed Durabronze (23kt Gold)	36 120 660-28
	Matte Black	36 120 660-33
	Brushed Bronze	36 120 660-42
	Champagne (22kt Gold)	36 120 660-47
	Brushed Chrome	36 120 660-93
	Brushed Dark Platinum	36 120 660-99

Required miscellaneous



Concealed single-lever mixer with backflow preventor - 35 021 970 90
 • min. recess depth mm
 • max. recess depth mm

Recommended miscellaneous



xGRID Attachment set for integrating in the dry wall construction - 12 340 970 90

Required miscellaneous



Concealed single-lever mixer - 35 020 970 90
 • min. recess depth mm
 • max. recess depth mm

Required miscellaneous

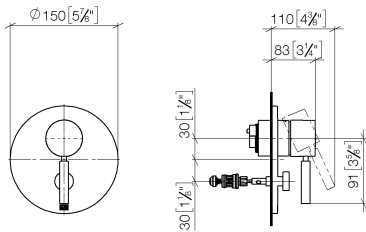


xGRID Installation track 555 mm - 12 360 970 90

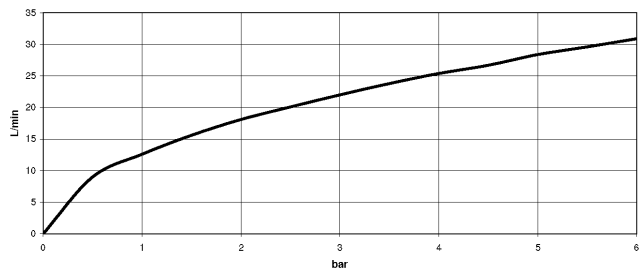
Concealed single-lever mixer with diverter - Brushed Champagne (22kt Gold)

36 120 660 Product version from 2/20/2020

mm [inches]



Flow rate chart



Codes & Standards

DIN 4109

EN 817

ISO 3822

Scottish Water
Byelaws

UK Water Supply
Regulations

Ü-Zeichen



Concealed single-lever mixer with diverter - Brushed Champagne (22kt Gold)

36 120 660 Product version from 2/20/2020

Certificates

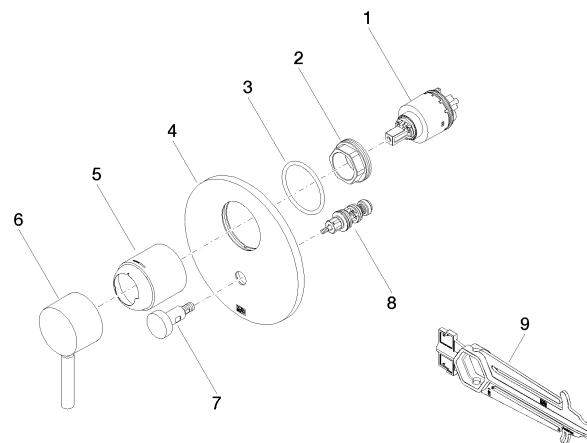
DVGW_DW-
6512DN0

LGA_19

WRAS_2207

Concealed single-lever mixer with diverter - Brushed Champagne (22kt Gold)

36 120 660 Product version from 2/20/2020



Spare parts list

No.	Item Number	Name	Quantity used	Delivery time
1	90 15 05 039 00 90	cartridge	1	2
2	09 24 04 448 90	nut	1	2
3	09 14 10 084 90	seal	1	2
4	09 11 02 261-46	plate	1	30
5	09 11 02 260-46	sleeve	1	30
6	90 20 66 004 00-46	handle	1	30
7	90 31 09 139 00-46	pull-rod	1	30
8	90 21 34 081 00 90	diverter	1	2
9	90 30 09 064 00 90	key	1	2