

VAIA Concealed single-lever mixer with diverter - Platinum

VAIA

36 120 809 Product version from 3/13/2017 to 2/20/2020



- automatic diverter
- cover plate Ø 150 mm
- WRAS

	Platinum	36 120 809-08
	Chrome	36 120 809-00
	Brushed Platinum	36 120 809-06
	Dark Chrome	36 120 809-19
	Brushed Durabronze (23kt Gold)	36 120 809-28
	Brushed Dark Brass	36 120 809-39
	Brushed Bronze	36 120 809-42
	Brushed Champagne (22kt Gold)	36 120 809-46
	Champagne (22kt Gold)	36 120 809-47
	Brushed Dark Platinum	36 120 809-99

Required miscellaneous



Concealed single-lever mixer with backflow preventor - 35 021 970 90
 • max. recess depth 105 mm
 • min. recess depth 80 mm

Recommended miscellaneous



xGRID Attachment set for integrating in the dry wall construction - 12 340 970 90

Required miscellaneous



Concealed single-lever mixer - 35 020 970 90
 • max. recess depth 105 mm
 • min. recess depth 80 mm

Required miscellaneous



xGRID Installation track 555 mm - 12 360 970 90

mm [inches]



Flow rate chart



Codes & Standards

DIN 4109

ISO 3822

Scottish Water
Byelaws

UK Water Supply
Regulations

Ü-Zeichen



VAIA Concealed single-lever mixer with diverter - Platinum

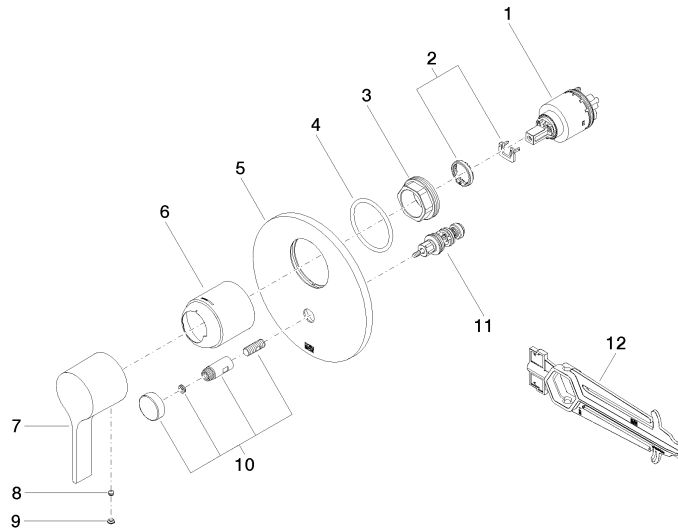
VAIA

36 120 809 Product version from 3/13/2017 to 2/20/2020

Certificates and sustainability

LGA_19

WRAS_2207



Spare parts list

No.	Item Number	Name	Quantity used	Delivery time
1	90 15 05 038 00 90	cartridge	1.00	60
4	09 14 10 084 90	seal	1.00	2
3	09 24 04 448 90	nut	1.00	2
9	90 31 20 087 00-08	plug	1.00	40
6	09 11 02 260-08	sleeve	1.00	40
10	90 31 09 139 00-08	pull-rod	1.00	40
5	09 11 02 261-08	plate	1.00	40
2	04 28 10 149 00 90	accessories	1.00	2
7	09 20 80 023-08	handle	1.00	40
11	90 21 34 081 00 90	diverter	1.00	2
12	90 30 09 064 00 90	key	1.00	2
8	90 31 11 063 00 90	pin	1.00	2