

Concealed two-way diverter - Matte Black

SERIES SPECIFIC

36 200 740
Product version from 4/1/2022



- rotary diverter
- without rosette
- handle Ø 60mm
- WRAS

|   |                                     |               |
|---|-------------------------------------|---------------|
|    | Matte Black                         | 36 200 740-33 |
|    | Chrome                              | 36 200 740-00 |
|    | Brushed Platinum                    | 36 200 740-06 |
|    | Light Gold                          | 36 200 740-26 |
|    | Brushed Light Gold                  | 36 200 740-27 |
|    | Brushed Durabrass<br>(23kt Gold)    | 36 200 740-28 |
|    | Brushed Dark<br>Brass               | 36 200 740-39 |
|    | Brushed Bronze                      | 36 200 740-42 |
|    | Brushed<br>Champagne (22kt<br>Gold) | 36 200 740-46 |
|   | Champagne (22kt<br>Gold)            | 36 200 740-47 |
|  | Brushed Dark<br>Platinum            | 36 200 740-99 |

Required miscellaneous

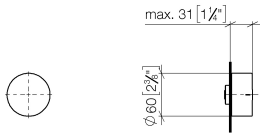


- Concealed two-way diverter -

35 202 970 90
- max. recess depth 160 mm
  - min. recess depth 85 mm

36 200 740
Product version from 4/1/2022

mm [inches]



Flow rate chart



Codes & Standards

|          |          |                        |                             |
|----------|----------|------------------------|-----------------------------|
| DIN 4109 | ISO 3822 | Scottish Water Byelaws | UK Water Supply Regulations |
|----------|----------|------------------------|-----------------------------|

Ü-Zeichen



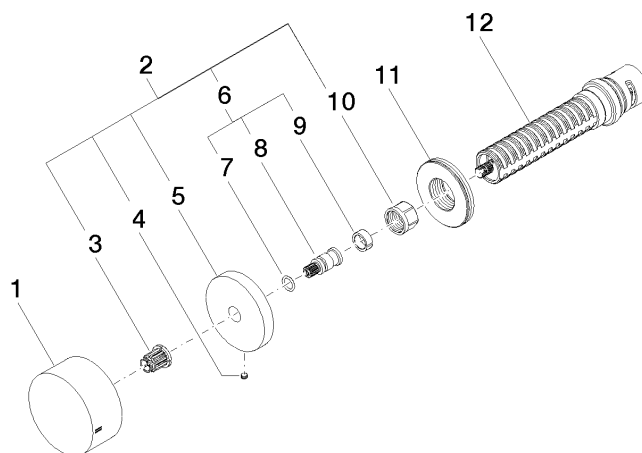
Concealed two-way diverter - Matte Black

SERIES SPECIFIC

36 200 740 Product version from 4/1/2022

Certificates and sustainability

LGA\_38 WRAS\_2307



## Spare parts list

| No.  | Item Number        | Name       | Quantity used | Delivery time |
|--|--------------------|------------|---------------|---------------|
| 8  | 09 29 06 020-33    | spindle    | 1.00          | -             |
| Spare part can no longer be ordered, please order the replacement item |                    |            |               |               |
| 3  | 90 12 12 002 00 90 | fixing cap | 1.00          | 2             |
| 4  | 09 31 11 055 90    | pin        | 1.00          | 2             |
| 2  | 04 27 74 004 00-33 | rosette    | 1.00          | 30            |
| 11   | 09 30 01 107 90    | sleeve     | 1.00          | 2             |
| 1  | 09 20 74 044-33    | handle     | 1.00          | 60            |
| 12   | 90 90 03 304 10 90 | diverter   | 1.00          | 2             |
| 5  | 09 27 74 004-33    | rosette    | 1.00          | 30            |
| 6  | 04 29 06 020 00-00 | spindle    | 1.00          | 10            |
| 9  | 90 14 15 020 03 90 | ring       | 1.00          | 2             |
| 10   | 90 23 30 023 00 90 | nut        | 1.00          | 2             |
| 7  | 90 14 10 060 00 90 | seal       | 1.00          | 2             |