

TARA Concealed two-way diverter - Dark Chrome

TARA

36 200 892 Product version from 4/1/2022



- rotary diverter
- rosette 60 mm
- WRAS

	Dark Chrome	36 200 892-19
	Chrome	36 200 892-00
	Brushed Platinum	36 200 892-06
	Platinum	36 200 892-08
	Brushed Durabronze (23kt Gold)	36 200 892-28
	Matte Black	36 200 892-33
	Brushed Dark Brass	36 200 892-39
	Brushed Bronze	36 200 892-42
	Brushed Champagne (22kt Gold)	36 200 892-46
	Champagne (22kt Gold)	36 200 892-47
	Brushed Chrome	36 200 892-93
	Brushed Dark Platinum	36 200 892-99

Required miscellaneous



- Concealed two-way diverter -** 35 202 970 90
- max. recess depth 160 mm
 - min. recess depth 85 mm

mm [inches]



Flow rate chart



Codes & Standards

DIN 4109	ISO 3822	Scottish Water Byelaws	UK Water Supply Regulations
----------	----------	---------------------------	--------------------------------

Ü-Zeichen



TARA Concealed two-way diverter - Dark Chrome

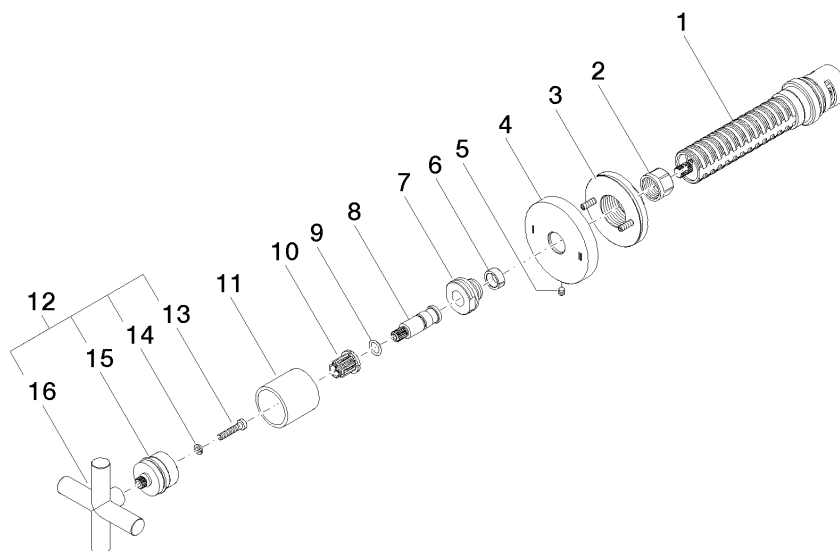
TARA

36 200 892 Product version from 4/1/2022

Certificates and sustainability

LGA_38

WRAS_2307



Spare parts list

No.	Item Number	Name	Quantity used	Delivery time
	11 09 21 02 144-19	sleeve	1.00	20
	10 90 12 12 002 00 90	fixing cap	1.00	2
	15 90 12 12 219 00-19	base	1.00	20
	8 09 29 06 022 90	spindle	1.00	2
	4 09 27 89 118-19	rosette	1.00	20
	5 09 31 11 294 90	pin	1.00	2
	16 09 20 89 010-19	handle	1.00	60
	3 90 21 02 181 00 90	disc	1.00	2
	7 09 24 05 002 90	nipple	1.00	2
	1 90 90 03 304 10 90	diverter	1.00	2
	12 90 20 89 010 10-19	handle	1.00	20
	2 90 23 30 023 00 90	nut	1.00	2
	13 90 30 30 075 00 90	screw	1.00	2
	9 90 14 10 060 00 90	seal	1.00	2
	6 90 14 15 020 03 90	ring	1.00	2
	14 90 30 11 029 00 90	disc	1.00	2