

WATER FAN horizontal Concealed body spray - Dark Chrome

IMO

36 512 979



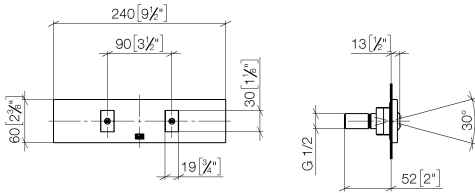
- forceful flat water jet
- horizontal water jet
- cover plate 240 x 60 mm
- water jet adjustable
- 1/2" connection
- max. flow 6.8 l/min
- This product can help a building meet the requirements of Green Building Rating Systems, e.g. LEED®, BREEAM®, DGNB

Fits: IMO, LULU, MADISON, MEM, TARA, CL.1, LISSÉ, VAIA, META, CYO

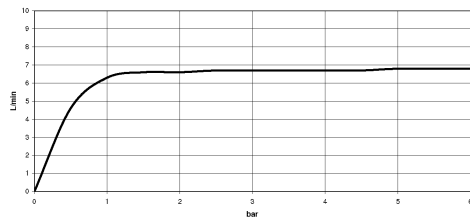
| | | |
|--|--------------------------------|--------------------|
|  | Dark Chrome | 36 512 979-19 0050 |
|  | Chrome | 36 512 979-00 0050 |
|  | Brushed Platinum | 36 512 979-06 0050 |
|  | Platinum | 36 512 979-08 0050 |
|  | Light Gold | 36 512 979-26 0050 |
|  | Brushed Light Gold | 36 512 979-27 0050 |
|  | Brushed Durabronze (23kt Gold) | 36 512 979-28 0050 |
|  | Matte Black | 36 512 979-33 0050 |
|  | Brushed Bronze | 36 512 979-42 0050 |
|  | Brushed Champagne (22kt Gold) | 36 512 979-46 0050 |
|  | Champagne (22kt Gold) | 36 512 979-47 0050 |
|  | Brushed Chrome | 36 512 979-93 0050 |
|  | Brushed Dark Platinum | 36 512 979-99 0050 |

36 512 979

mm [inches]

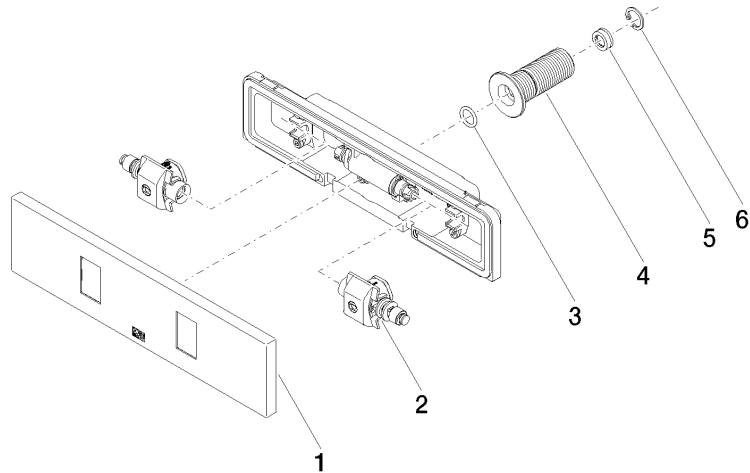


Flow rate chart



Product version from 7/1/2022

Parts for other
finishes can be found
here: [Chrome](#)





WATER FAN horizontal Concealed body spray - Dark Chrome

IMO

36 512 979

Spare parts list

Product version from 7/1/2022

| No. | Item Number | Name | Quantity used | Delivery time |
|-----|--------------------|--------|---------------|---------------|
| | 90 27 99 002 00-19 | insert | 6 | 20 |