

WATER FAN horizontal Concealed body spray - Brushed Light Gold

SERIES-VARIOUS

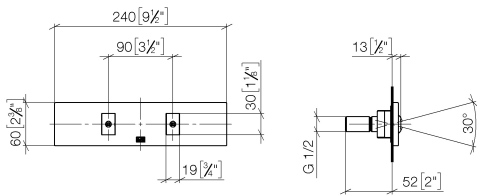
36 512 979 Product version from 7/1/2022



- forceful flat water jet
- horizontal water jet
- cover plate 240 x 60 mm
- water jet adjustable
- 1/2" connection
- max. flow 6.8 l/min
- This product can help a building meet the requirements of Green Building Rating Systems, e.g. LEED®, BREEAM®, DGNB

	Brushed Light Gold	36 512 979-27 0050
	Chrome	36 512 979-00 0050
	Brushed Platinum	36 512 979-06 0050
	Platinum	36 512 979-08 0050
	Dark Chrome	36 512 979-19 0050
	Light Gold	36 512 979-26 0050
	Brushed Durabronze (23kt Gold)	36 512 979-28 0050
	Matte Black	36 512 979-33 0050
	Brushed Dark Bronze	36 512 979-39 0050
	Brushed Bronze	36 512 979-42 0050
	Brushed Champagne (22kt Gold)	36 512 979-46 0050
	Champagne (22kt Gold)	36 512 979-47 0050
	Brushed Chrome	36 512 979-93 0050
	Brushed Dark Platinum	36 512 979-99 0050

mm [inches]



Flow rate chart



WATER FAN horizontal Concealed body spray - Brushed Light Gold

SERIES-VARIOUS

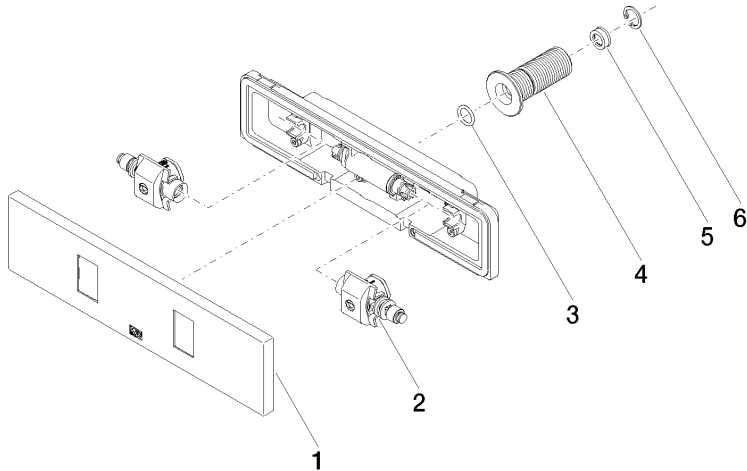
36 512 979

Product version from 7/1/2022

Parts for other

finishes can be found

here: [Chrome](#)



Spare parts list

No.	Item Number	Name	Quantity used	Delivery time
	3 09 14 10 003 90	seal	1.00	2
	2 90 31 10 012 00 90	insert	1.00	2
	6 09 16 01 014 90	ring	1.00	2
	4 09 24 05 015 90	nipple	1.00	2
	1 90 27 99 002 00-27	insert	1.00	30
	5 09 23 01 165 90	flow reducer	1.00	2