

WATER FAN horizontal Concealed body spray - Brushed Durabrand (23kt Gold)

IMO

36 512 979



- forceful flat water jet
- horizontal water jet
- cover plate 240 x 60 mm
- water jet adjustable
- 1/2" connection
- max. flow 6.8 l/min
- This product can help a building meet the requirements of Green Building Rating Systems, e.g. LEED®, BREEAM®, DGNB

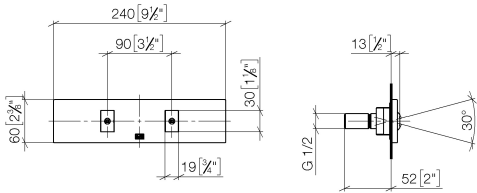
Fits: IMO, LULU, MADISON, MEM, TARA, CL.1, LISSÉ, VAIA, META, CYO

	Brushed Durabrand (23kt Gold)	36 512 979-28 0050
	Chrome	36 512 979-00 0050
	Brushed Platinum	36 512 979-06 0050
	Platinum	36 512 979-08 0050
	Dark Chrome	36 512 979-19 0050
	Light Gold	36 512 979-26 0050
	Brushed Light Gold	36 512 979-27 0050
	Matte Black	36 512 979-33 0050
	Brushed Bronze	36 512 979-42 0050
	Brushed Champagne (22kt Gold)	36 512 979-46 0050
	Champagne (22kt Gold)	36 512 979-47 0050
	Brushed Chrome	36 512 979-93 0050
	Brushed Dark Platinum	36 512 979-99 0050

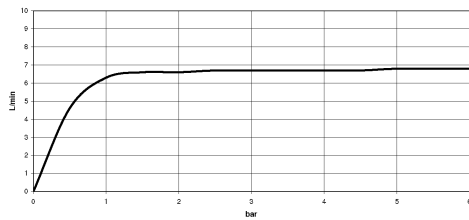
WATER FAN horizontal Concealed body spray - Brushed Durabronz (23kt Gold)

IMO

36 512 979
mm [inches]



Flow rate chart



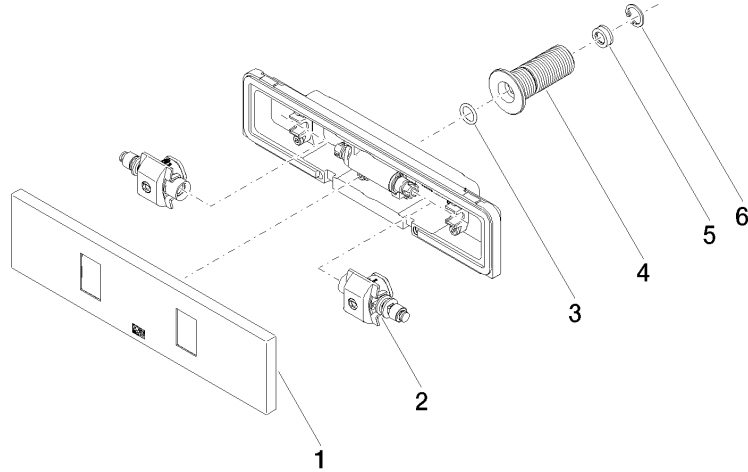
WATER FAN horizontal Concealed body spray - Brushed Durabronz (23kt Gold)

IMO

36 512 979

Product version from 7/1/2022

Parts for other
finishes can be found
here: [Chrome](#)





WATER FAN horizontal Concealed body spray - Brushed Durabrass (23kt Gold)

IMO

36 512 979

Spare parts list

Product version from 7/1/2022

No.	Item Number	Name	Quantity used	Delivery time
	90 27 99 002 00-28	insert	6	20