

TARA Wall valve clockwise closing 1/2" - Brushed Chrome

TARA

36 607 892 Product version up to 10/27/2020

- rosette Ø 55 mm
- head part with cut-to-length spindle and sleeve
- WRAS



	Brushed Chrome	36 607 892-93
	Chrome	36 607 892-00
	Brushed Platinum	36 607 892-06
	Platinum	36 607 892-08
	Dark Chrome	36 607 892-19
	Brushed Durabronze (23kt Gold)	36 607 892-28
	Matte Black	36 607 892-33
	Brushed Bronze	36 607 892-42
	Brushed Champagne (22kt Gold)	36 607 892-46
	Champagne (22kt Gold)	36 607 892-47
	Brushed Dark Platinum	36 607 892-99



Codes & Standards			
ASME A112.18.1	cUPC	DIN 4109	EN 1111
EN 200	ISO 3822	Scottish Water Byelaws	UK Water Supply Regulations
Ü-Zeichen			

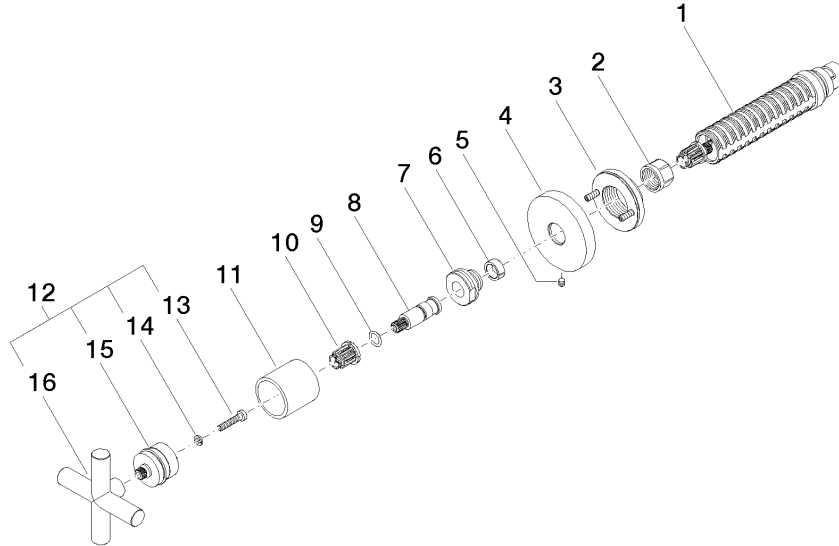
Certificates and sustainability				
DVGW_DW-6501DN0	WRAS_2011	LGA_29	WRAS_2010	DVGW_DW-6512DN0
LGA_29	IAPMO_4976 (

TARA Wall valve clockwise closing 1/2" - Brushed Chrome

TARA

36 607 892 Product version up to 10/27/2020

Parts for other
finishes can be found
here: [Chrome](#)



Spare parts list

No.	Item Number	Name	Quantity used	Delivery time
15	90 12 12 007 00-93	base	1.00	20
8	09 29 06 022 90	spindle	1.00	2
10	90 12 12 002 00 90	fixing cap	1.00	2
16	09 20 89 010-93	handle	1.00	60
11	09 21 02 144-93	sleeve	1.00	20
1	90 90 03 143 00 90	top	1.00	2
4	09 27 89 108-93	rosette	1.00	20
7	09 24 05 002 90	nipple	1.00	2
3	90 21 02 108 00 90	disc	1.00	2
5	90 31 11 007 00 90	pin	1.00	2
14	90 30 11 029 00 90	disc	1.00	2
6	90 14 15 020 03 90	ring	1.00	2
2	90 23 30 023 00 90	nut	1.00	2
12	90 20 89 010 10-93	handle	1.00	20
13	90 30 30 075 00 90	screw	1.00	2
9	90 14 10 060 00 90	seal	1.00	2