

IMO Wall valve anti-clockwise closing 3/4" - Brushed Platinum

IMO

36 608 980 Product version from 6/1/2024



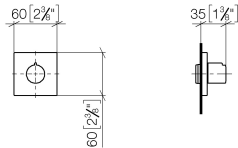
- rosette 60 x 60 mm
- head part with cut-to-length spindle and sleeve
- WRAS

| | | |
|---|-----------------------------------|---------------|
|  | Brushed Platinum | 36 608 980-06 |
|  | Chrome | 36 608 980-00 |
|  | Platinum | 36 608 980-08 |
|  | Dark Chrome | 36 608 980-19 |
|  | Brushed Light Gold | 36 608 980-27 |
|  | Brushed Durabronze (23kt Gold) | 36 608 980-28 |
|  | Matte Black | 36 608 980-33 |
|  | Brushed Chrome | 36 608 980-93 |
|  | Brushed Dark Platinum | 36 608 980-99 |

Required miscellaneous

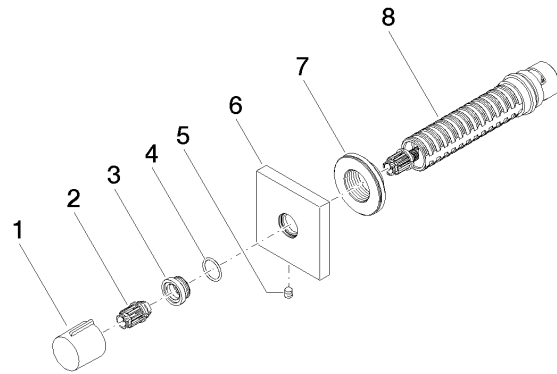
- | | | |
|---|---|---------------|
|  | Wall valve 3/4" - • max. recess depth 145 mm • min. recess depth 75 mm | 35 608 970 90 |
|---|---|---------------|

mm [inches]



| Codes & Standards | | | |
|-------------------|------|---------------------------|--------------------------------|
| ASME A112.18.1 | cUPC | Scottish Water Byelaws | UK Water Supply Regulations |

| Certificates and sustainability | |
|---------------------------------|--------------|
| WRAS_2010 | IAPMO_4976 (|



Spare parts list

| No. | Item Number | Name | Quantity used | Delivery time |
|-----|--------------------|------------|---------------|---------------|
| 4 | 09 14 10 017 90 | seal | 1.00 | 2 |
| 7 | 09 21 02 151 90 | sleeve | 1.00 | 2 |
| 1 | 09 20 98 001-06 | handle | 1.00 | 10 |
| 8 | 90 90 03 128 00 90 | top | 1.00 | 2 |
| 6 | 09 27 98 014-06 | rosette | 1.00 | 10 |
| 3 | 09 12 12 043-06 | base | 1.00 | 10 |
| 2 | 09 12 12 005 90 | fixing cap | 1.00 | 2 |
| 5 | 90 31 11 004 00 90 | pin | 1.00 | 2 |