

TARA Wall-mounted sink mixer with extending spout - Chrome

TARA

36 819 892



- 325-495mm projection
- pivoting spout
- laminar flow
- rosette Ø 55 mm
- max. flow 19.9 l/min at 3 bar flow pressure
- lead-free

Required miscellaneous



Concealed wall-mounted mixer centred spout -

35 700 970 90

- max. recess depth 145 mm
- min. recess depth 85 mm

Required miscellaneous



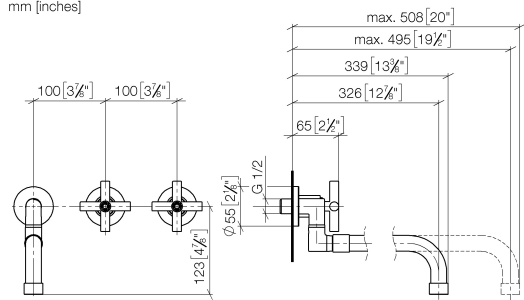
Concealed wall-mounted mixer variable positioning -

35 720 970 90

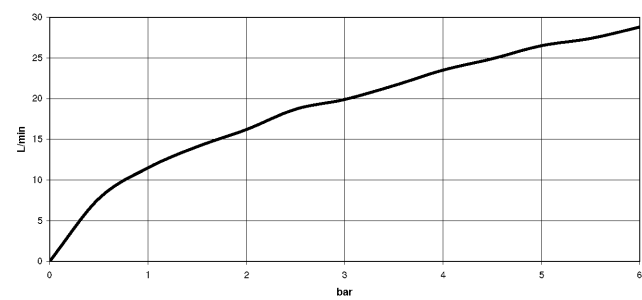
- min. recess depth 85 mm
- max. recess depth 145 mm

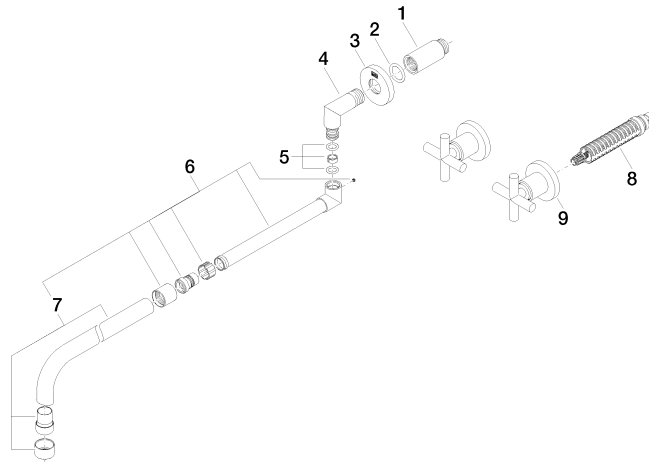
36 819 892

mm [inches]



Flow rate chart





Spare parts list

No.	Item Number	Name	Quantity used	Delivery time
1	09 24 03 081 10 90	extension	1	2
2	90 14 10 026 00 90	seal	1	2
3	09 27 22 501-00	rosette	1	10
4	09 11 03 013 10-00	connection	1	10
5	90 14 15 020 00 90	gasket kit	1	2
6	04 28 25 077 10-00	spout	1	60
7	90 28 25 076 00-00	spout	1	10
8	90 90 03 157 00 90	top	2	2
9	36 310 892-00	connection	2	10