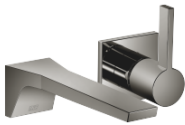





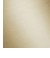


CL.1 Wall-mounted single-lever basin mixer without pop-up waste - Dark Chrome

CL.1

36 860 705



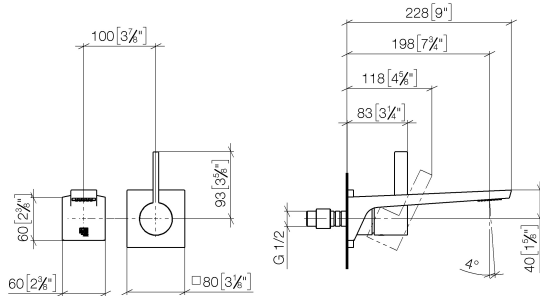
- 198mm projection
- fixed spout
- rectangular spray pattern with 40 individual jets
- hole diameter spout 37 mm
- hole diameter single-lever mixer 57 mm
- rosette 80 x 80 mm
- max. flow 4.5 l/min
- lead-free
- This product can help a building meet the requirements of Green Building Rating Systems, e.g. LEED®, BREEAM®, DGNB

	Dark Chrome	36 860 705-19
	Chrome	36 860 705-00
	Brushed Platinum	36 860 705-06
	Brushed Champagne (22kt Gold)	36 860 705-46
	Champagne (22kt Gold)	36 860 705-47
	Brushed Dark Platinum	36 860 705-99

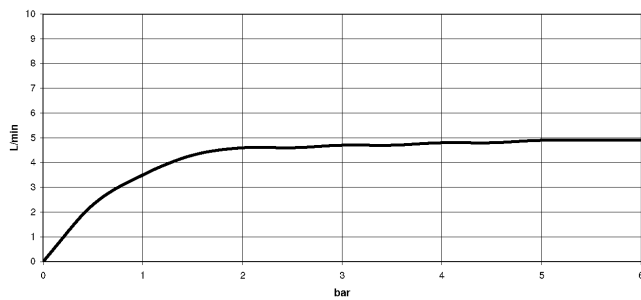
## CL.1 Wall-mounted single-lever basin mixer without pop-up waste - Dark Chrome

CL.1

36 860 705  
mm [inches]



### Flow rate chart



### Codes & Standards

EN 817

NSF372

NSF61



## CL.1 Wall-mounted single-lever basin mixer without pop-up waste - Dark Chrome

---

CL.1

36 860 705

Certificates

---

IAPMO\_6397

IAPMO\_N-4976

DVGW\_DW-  
6512DN0

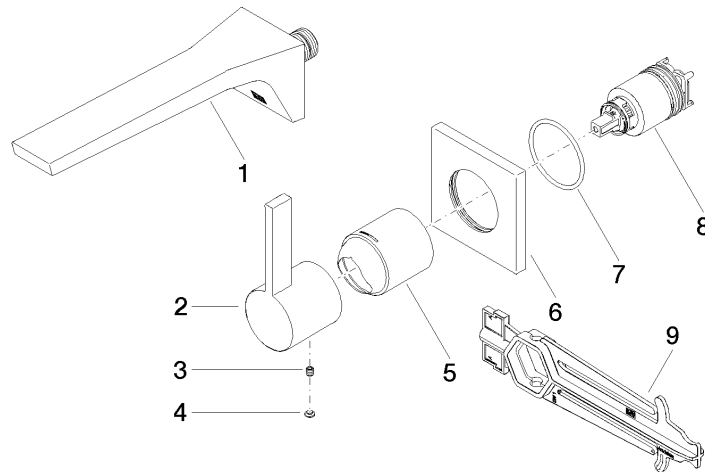
## CL.1 Wall-mounted single-lever basin mixer without pop-up waste - Dark Chrome

CL.1

36 860 705

**Product version from 7/1/2023**

Parts for other  
finishes can be found  
here: [Chrome](#)





## CL.1 Wall-mounted single-lever basin mixer without pop-up waste - Dark Chrome

CL.1

36 860 705

### Spare parts list

#### Product version from 7/1/2023

No.	Item Number	Name	Quantity used	Delivery time
	13 800 705-19	CL.1 Wall-mounted basin spout without pop-up waste - Dark Chrome	9	20