

## MEM Wall-mounted single-lever basin mixer without pop-up waste - Brushed Platinum

MEM

36 860 782 Product version from 9/1/2025



- 177mm projection
- fixed spout
- rectangular, air-enriched flow
- hole diameter spout 37 mm
- hole diameter single-lever mixer 57 mm
- rosette for spout 80 x 60mm
- rosette for mixer 80 x 80mm
- max. flow 5.7 l/min
- lead-free
- This product can help a building meet the requirements of Green Building Rating Systems, e.g. LEED®, BREEAM®, DGNB
- WRAS

|   |                               |               |
|---|-------------------------------|---------------|
|  | Brushed Platinum              | 36 860 782-06 |
|  | Chrome                        | 36 860 782-00 |
|  | Platinum                      | 36 860 782-08 |
|  | Dark Chrome                   | 36 860 782-19 |
|  | Brushed Durabrass (23kt Gold) | 36 860 782-28 |
|  | Brushed Dark Brass            | 36 860 782-39 |
|  | Brushed Champagne (22kt Gold) | 36 860 782-46 |
|  | Champagne (22kt Gold)         | 36 860 782-47 |
|  | Brushed Dark Platinum         | 36 860 782-99 |

### Required miscellaneous



#### Concealed wall-mounted single-lever mixer - 35 860 970 90

- max. recess depth 95 mm
- min. recess depth 80 mm
- mixer can be placed above, to the left or to the right of the spout.

### Required miscellaneous



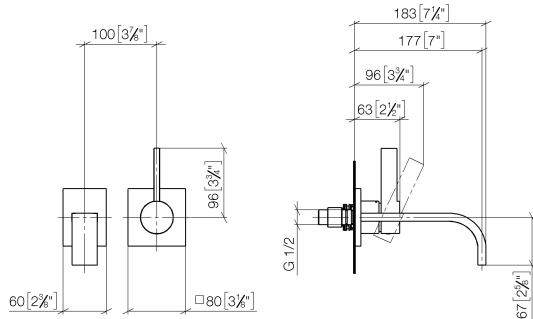
#### Concealed wall-mounted single-lever mixer mixer on right - 35 816 970 90

- NOTE: Not suitable for concealed installation. Connection by means of angle valves, mounted with screws to back wall.

## MEM Wall-mounted single-lever basin mixer without pop-up waste - Brushed Platinum

MEM

36 860 782 Product version from 9/1/2025  
mm [inches]



Flow rate chart



### Codes & Standards

DIN 4109

EN 817

ISO 3822

Scottish Water  
Byelaws

UK Water Supply  
Regulations

Ü-Zeichen



MEM Wall-mounted single-lever basin mixer without pop-up waste - Brushed  
Platinum

MEM

36 860 782    Product version from 9/1/2025

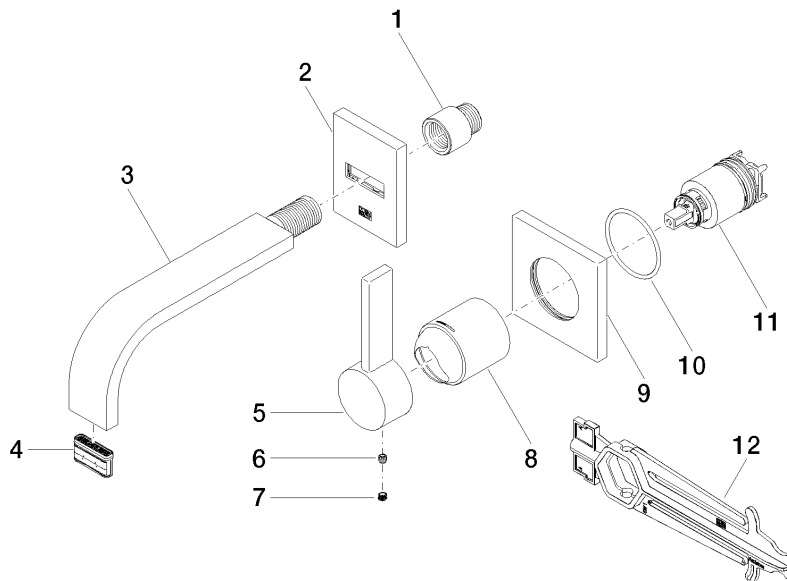
Certificates and sustainability

|        |                     |           |
|--------|---------------------|-----------|
| LGA_29 | DVGW_DW-<br>6512DN0 | WRAS_2107 |
|--------|---------------------|-----------|

## MEM Wall-mounted single-lever basin mixer without pop-up waste - Brushed Platinum

MEM

36 860 782 Product version from 9/1/2025



### Spare parts list

| No. | Item Number        | Name      | Quantity used | Delivery time |
|-----|--------------------|-----------|---------------|---------------|
| 11  | 90 15 05 064 01 90 | cartridge | 1.00          | 2             |
| 3   | 04 28 22 150 10-06 | spout     | 1.00          | 10            |
| 5   | 09 20 78 058-06    | handle    | 1.00          | 10            |
| 8   | 09 11 02 288-06    | cover     | 1.00          | 10            |
| 2   | 90 27 78 038 00-06 | rosette   | 1.00          | 10            |
| 4   | 90 29 03 109 00 90 | aerator   | 1.00          | 2             |
| 9   | 09 27 78 039-06    | rosette   | 1.00          | 10            |
| 1   | 09 24 03 072 10 90 | nipple    | 1.00          | 2             |
| 12  | 90 30 09 064 00 90 | key       | 1.00          | 2             |
| 6   | 90 31 11 030 00 90 | pin       | 1.00          | 2             |
| 7   | 90 31 20 109 00 90 | plug      | 1.00          | 2             |
| 10  | 90 14 10 049 00 90 | seal      | 1.00          | 2             |