



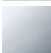

IMO Wall-mounted single-lever basin mixer without pop-up waste - Brushed Platinum

IMO


36 861 670



- 170mm projection
- fixed spout
- rectangular, air-enriched flow
- hole diameter spout 37 mm
- hole diameter single-lever mixer 57 mm
- rosette for spout 80 x 60mm
- rosette for mixer 80 x 80mm
- max. flow 5.7 l/min
- lead-free
- This product can help a building meet the requirements of Green Building Rating Systems, e.g. LEED®, BREEAM®, DGNB

	Brushed Platinum	36 861 670-06
	Chrome	36 861 670-00
	Brushed Chrome	36 861 670-93

Required miscellaneous




Concealed wall-mounted single-lever mixer mixer on right -

35 816 970 90

•NOTE:Not suitable for concealed installation.Connection by means of angle valves, mounted with screws to back wall.

Required miscellaneous



Concealed wall-mounted single-lever mixer -

35 860 970 90

•max. recess depth 95 mm

•min. recess depth 80 mm

We reserve the right to change designs, product range and technical specifications without prior notice.

More information can be found at: [www.dornbracht.com](http://www.dornbracht.com) +49 (0) 2371 8899 900 mail@dornbracht.com

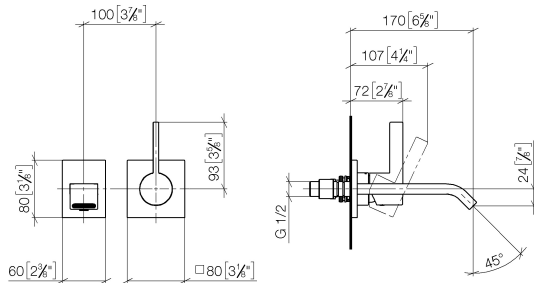
1/3

4/1/2024

## IMO Wall-mounted single-lever basin mixer without pop-up waste - Brushed Platinum

IMO

36 861 670  
mm [inches]



### Flow rate chart



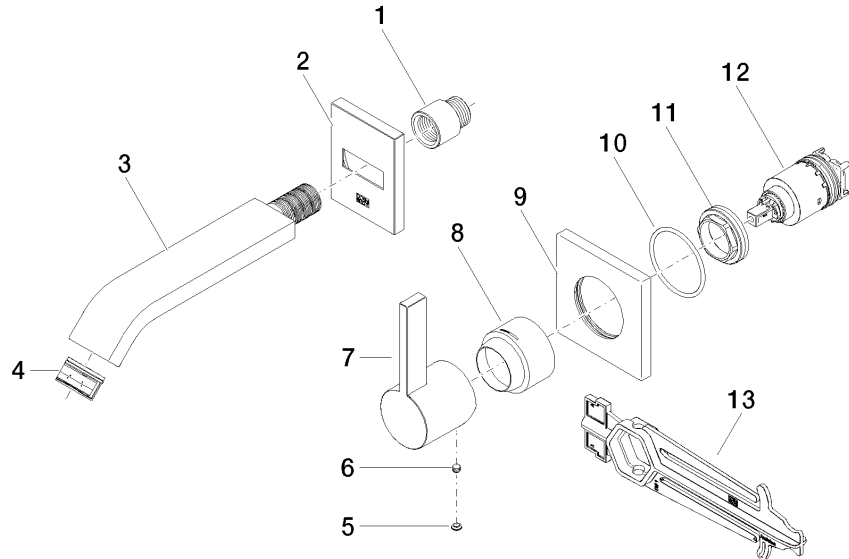
### Certificates

LGA\_29906.

DVGW\_DW-  
6512DN0435.

WRAS\_2107018.

36 861 670



## Spare parts list

No.	Item Number	Name	Quantity used	Delivery time
1	09 24 03 072 10 90	nipple	1	2
2	90 27 67 005 00-06	rosette	1	10
3	04 28 22 243 00-06	spout	1	10
4	90 29 03 109 00 90	aerator	1	2
5	90 31 20 087 00-06	plug	1	10
6	90 31 11 112 00 90	pin	1	2
7	09 20 67 004-06	handle	1	10
8	09 11 02 530-06	cover	1	10
9	09 27 78 039-06	rosette	1	10
10	90 14 10 049 00 90	seal	1	2
11	09 24 04 105 90	nut	1	2
12	90 15 05 064 01 90	cartridge	1	2
13	90 30 09 064 00 90	key	1	2