




DORNBACHT YARRE Wall-mounted single-lever basin mixer without pop-up waste - Chrome

DORNBACHT YARRE

36 861 832    Product version from 1/1/2023



- 200mm projection
- fixed spout
- circular, air-enriched flow
- hole diameter spout 37 mm
- hole diameter single-lever mixer 57 mm
- rosette for mixer 78 x 78mm
- max. flow 6.8 l/min
- lead-free
- rosette for spout Ø 60mm
- rosette for mixer Ø 78mm
- WRAS

|   |            |               |
|---|------------|---------------|
|  | Chrome     | 36 861 832-00 |
|  | Soft Black | 36 861 832-69 |

Required miscellaneous

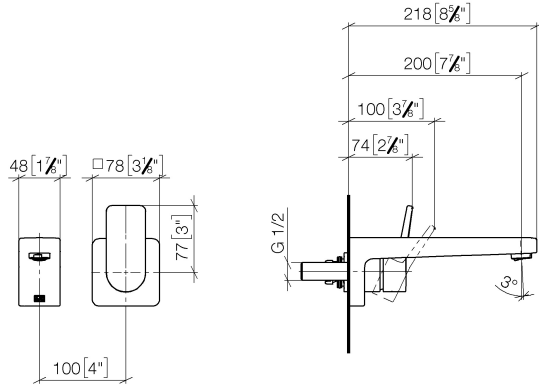


**SERIES SPECIFIC Concealed wall-mounted single-lever mixer mixer on right -** 35 870 970 90

# DORNBRAUCHT YARRE Wall-mounted single-lever basin mixer without pop-up waste - Chrome

DORNBRAUCHT  
YARRE

36 861 832 Product version from 1/1/2023  
mm [inches]



Flow rate chart



## Codes & Standards

DIN 4109

EN 817

ISO 3822

Scottish Water  
Byelaws

UK Water Supply  
Regulations

Ü-Zeichen

XP P 41-280



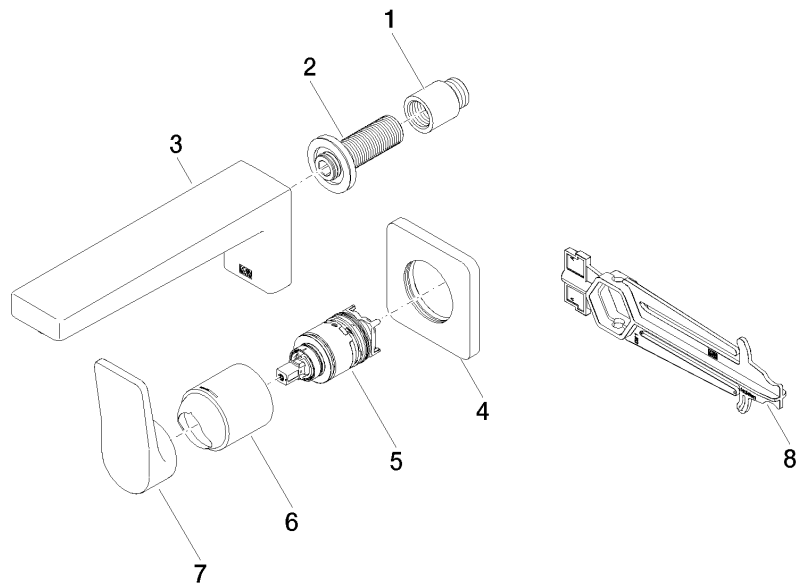
DORNBRACHT YARRE Wall-mounted single-lever basin mixer without pop-up  
waste - Chrome

DORNBRACHT  
YARRE

36 861 832 Product version from 1/1/2023

Certificates and sustainability

|        |               |             |                     |
|--------|---------------|-------------|---------------------|
| AbP_10 | ACS_23 ACC NY | WRAS_240504 | DVGW_DW-<br>6512DO0 |
|--------|---------------|-------------|---------------------|



## Spare parts list

| No. | Item Number        | Name      | Quantity used | Delivery time |
|-----|--------------------|-----------|---------------|---------------|
| 2   | 90 24 03 316 00 90 | nipple    | 1.00          | 2             |
| 1   | 09 24 03 080 90    | extension | 1.00          | 2             |
| 7   | 90 20 83 072 00-00 | handle    | 1.00          | 2             |
| 3   | 90 11 06 225 01-00 | spout     | 1.00          | 2             |
| 4   | 90 27 83 027 00-00 | rosette   | 1.00          | 2             |
| 6   | 90 11 02 393 00-00 | cover     | 1.00          | 2             |
| 5   | 90 15 05 071 00 90 | cartridge | 1.00          | 2             |
| 8   | 90 30 09 064 00 90 | key       | 1.00          | 2             |