

# eSET Touchfree Basin mixer with temperature setting -

SERIES-VARIOUS

42 765 970 90 Product version from 3/12/2018 to 4/29/2019



- automatic hygiene flush
- suitable for thermal disinfection
- adjustable follow-up time
- high-frequency sensors with self-calibration
- magnetic valve
- temperature setting via thermostat
- 100-240 V AC / 12 V DC, 50-60 Hz, 18 W power supply unit, incl. country-specific adapter set
- WRAS

**Cannot be combined with basins in conducting materials (e.g. steel, river stone).**

**Use with top-mounted basins is excluded.**

**Cannot be combined with basins that have a closing drain.**

**ATTENTION: Separate terms and conditions for electronic articles are applicable.**

Cannot be combined with basins in conducting materials (e.g. steel, river stone).

Use with top-mounted basins is excluded.

Cannot be combined with basins that have a closing drain.

ATTENTION: Separate terms and conditions for electronic articles are applicable.

## Required miscellaneous



**eSET Touchfree Basin mixer with temperature setting for combining with wall-mounted fittings -** 35 741 970 90

- max. recess depth 125 mm
- min. recess depth 90 mm

## Recommended miscellaneous

**Extension for Touchfree 500 mm -** 12 765 970 90



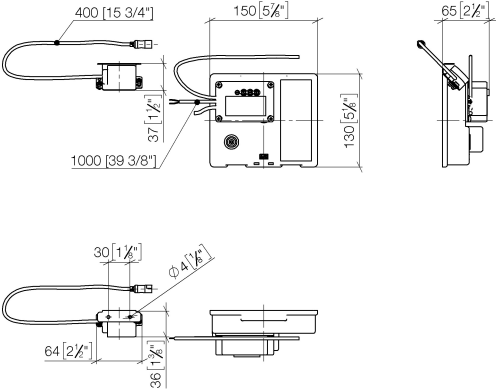
## Required miscellaneous



**eSET Touchfree Basin mixer with temperature setting for combining with free-standing fittings -** 35 740 970 90

42 765 970 90    Product version from 3/12/2018 to 4/29/2019

mm [inches]

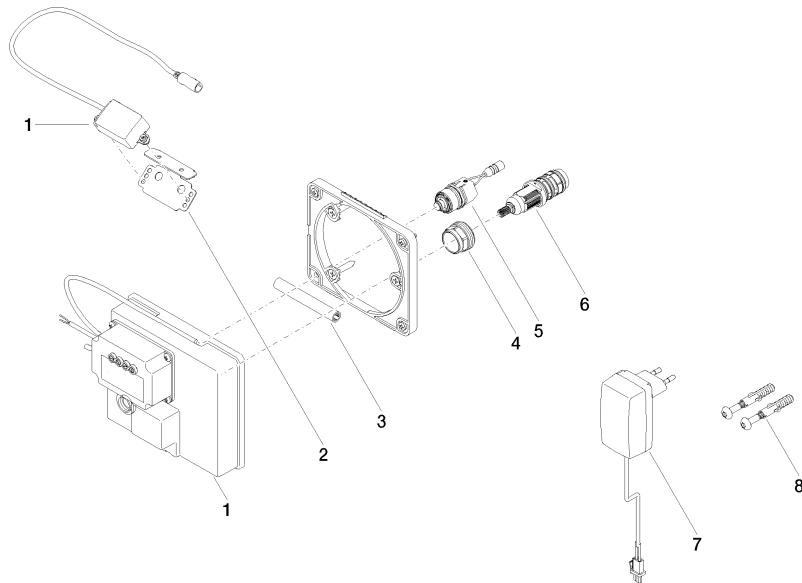


Codes & Standards

|                           |                                |          |           |
|---------------------------|--------------------------------|----------|-----------|
| CSA C22.2 No.<br>14       | CSA C22.2 No.<br>68            | DIN 4109 | ISO 3822  |
| Scottish Water<br>Byelaws | UK Water Supply<br>Regulations | UL 1951  | Ü-Zeichen |

Certificates and sustainability

|             |        |   |   |        |
|-------------|--------|---|---|--------|
| LGA_29      | IAPMO_ | CE000001_eSet_Tou<br>chfree_20171206_D<br>E_sig | CE000002_eSet_Tou<br>chfree_20171206_E<br>N_sig | LGA_29 |
| WRAS_250302 |        |   |   |        |



## Spare parts list

| No. | Item Number        | Name                   | Quantity used | Delivery time |
|-----|--------------------|------------------------|---------------|---------------|
| 5   | 04 30 50 079 00 90 | valve                  | 1.00          | 2             |
| 6   | 90 15 02 013 00 90 | cartridge              | 1.00          | 2             |
| 8   | 04 30 31 024 01 90 | fixing set             | 1.00          | 2             |
| 2   | 90 17 20 199 00 90 | holder                 | 1.00          | 2             |
| 1   | 90 10 01 177 00 90 | electronic accessories | 1.00          | 2             |
| 4   | 09 23 10 129 90    | nut                    | 1.00          | 2             |
| 7   | 04 10 01 246 00 90 | electronic accessories | 1.00          | 2             |
| 3   | 90 23 01 124 00 90 | sleeve                 | 1.00          | 2             |