

83 251 892



- width 70mm
- rosette Ø 55 mm
- 64mm projection

Fits TARA

|   |                               |               |
|---|-------------------------------|---------------|
|    | Dark Chrome                   | 83 251 892-19 |
|    | Chrome                        | 83 251 892-00 |
|    | Brushed Platinum              | 83 251 892-06 |
|    | Platinum                      | 83 251 892-08 |
|    | Durabrass (23kt Gold)         | 83 251 892-09 |
|    | Brushed Light Gold            | 83 251 892-27 |
|    | Brushed Durabrass (23kt Gold) | 83 251 892-28 |
|    | Matte Black                   | 83 251 892-33 |
|    | Brushed Bronze                | 83 251 892-42 |
|   | Brushed Champagne (22kt Gold) | 83 251 892-46 |
|  | Champagne (22kt Gold)         | 83 251 892-47 |
|  | Brushed Chrome                | 83 251 892-93 |
|  | Brushed Dark Platinum         | 83 251 892-99 |

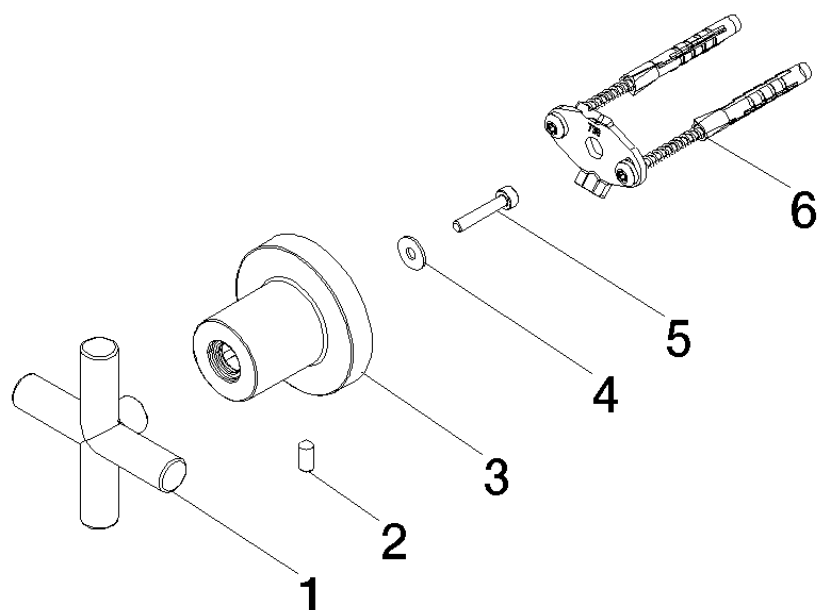
83 251 892

mm [inches]



83 251 892

Parts for other  
finishes can be found  
here: [Chrome](#)



## Spare parts list

| No. | Item Number        | Name       | Quantity used | Delivery time |
|-----|--------------------|------------|---------------|---------------|
| 2   | 04 31 11 113 00 90 | pin        | 1.00          | 2             |
| 4   | 09 30 11 040 90    | disc       | 1.00          | 2             |
| 6   | 05 17 20 739 00 90 | fixing set | 1.00          | 2             |
| 5   | 09 30 30 182 90    | screw      | 1.00          | 2             |
| 3   | 08 17 89 505-19    | holder     | 1.00          | 20            |
| 1   | 90 20 89 010 10-19 | handle     | 1.00          | 20            |