


Towel warmer , 6-fold , projection left , without control element - Brushed Chrome
SERIES SPECIFIC

83 306 979
Product version from 4/1/2025



- gauge 120 mm
- width 610mm
- height 680 mm
- rosette Ø 80 mm
- Projection: 67 mm
- Degree of protection IP 44, CE marking
- Output per towel bar: 15 watts
- Rated voltage: 220 - 240 V AC

**Without control element**

**Activation must be handled by the customer**

**Note: Different conditioning.**







**This appliance is a stationary electric space heater and, in order to comply with the mandatory ecodesign requirements of Commission Regulation (EU) 2024/1103, must be equipped with at least one control with control function TW(f2).**

Without control element


Activation must be handled by the customer

Note: Different conditioning.

This appliance is a stationary electric space heater and, in order to comply with the mandatory ecodesign requirements of Commission Regulation (EU) 2024/1103, must be equipped with at least one control with control function TW(f2).

	Brushed Chrome	83 306 979-93
	Chrome	83 306 979-00
	Dark Chrome	83 306 979-19
	Matte Black	83 306 979-33
	Brushed Champagne (22kt Gold)	83 306 979-46
	Brushed Dark Platinum	83 306 979-99

Required miscellaneous



**Concealed wall installation box for towel warmer , 6-fold , without control element -**

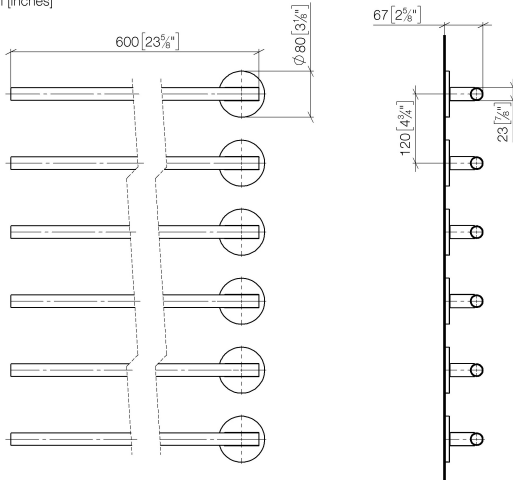
- min. recess depth 70 mm
- max. recess depth 105 mm

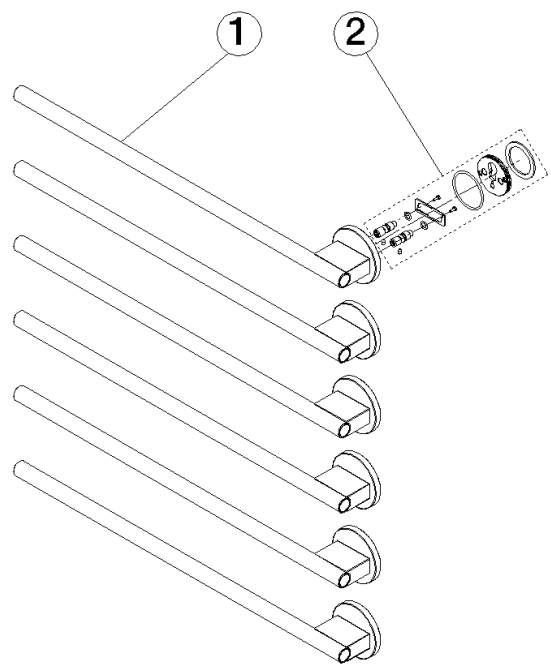
35 313 970 90

# Towel warmer , 6-fold , projection left , without control element - Brushed Chrome

SERIES SPECIFIC

83 306 979 Product version from 4/1/2025  
mm [inches]





Spare parts list

No.	Item Number	Name	Quantity used	Delivery time
2	90 30 30 252 00 90	fixing set	1.00	2
1	90 17 97 102 00-93	holder	1.00	50