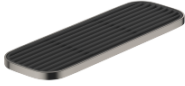


## Shelf wall model - Brushed Dark Platinum

TARA

83 482 970



- width 300mm
- height 26 mm
- 100mm projection
- without grid element

Fits: TARA, LISSÉ, META

|  |                                |               |
|--|--------------------------------|---------------|
|    | Brushed Dark Platinum          | 83 482 970-99 |
|    | Chrome                         | 83 482 970-00 |
|    | Brushed Platinum               | 83 482 970-06 |
|    | Platinum                       | 83 482 970-08 |
|    | Dark Chrome                    | 83 482 970-19 |
|    | Light Gold                     | 83 482 970-26 |
|    | Brushed Light Gold             | 83 482 970-27 |
|    | Brushed Durabronze (23kt Gold) | 83 482 970-28 |
|    | Matte Black                    | 83 482 970-33 |
|   | Brushed Bronze                 | 83 482 970-42 |
|  | Brushed Champagne (22kt Gold)  | 83 482 970-46 |
|  | Champagne (22kt Gold)          | 83 482 970-47 |
|  | Brushed Chrome                 | 83 482 970-93 |

### Required miscellaneous

|                                   |               |
|-----------------------------------|---------------|
| <b>Grid element - Matte Black</b> | 82 482 970-33 |
| •plastic grid elements            |               |

### Required miscellaneous

|                                    |               |
|------------------------------------|---------------|
| <b>Grid element - Creamy White</b> | 82 482 970-51 |
| •plastic grid elements             |               |

### Required miscellaneous

|                                  |               |
|----------------------------------|---------------|
| <b>Grid element - Light Grey</b> | 82 482 970-52 |
| •plastic grid elements           |               |

### Required miscellaneous

|                             |               |
|-----------------------------|---------------|
| <b>Grid element - Taupe</b> | 82 482 970-53 |
| •plastic grid elements      |               |

## Shelf wall model - Brushed Dark Platinum

TARA

83 482 970

mm [inches]



**Product version from 10/1/2023**

Parts for other  
finishes can be found  
here: [Chrome](#)





## Shelf wall model - Brushed Dark Platinum

TARA

83 482 970

### Spare parts list

#### Product version from 10/1/2023

| No. | Item Number        | Name | Quantity used | Delivery time |
|-----|--------------------|------|---------------|---------------|
|     | 90 30 30 520 00-99 | set  | 3             | 30            |