

Reserve tissue holder - Brushed Bronze

SERIES SPECIFIC

83 590 979 Product version from 7/1/2023

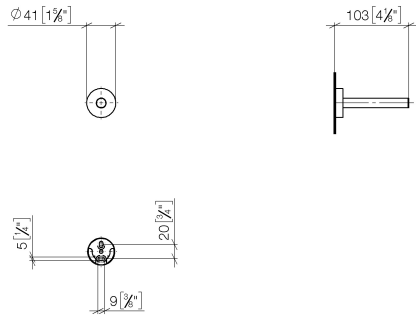
- rosette Ø 40 mm
- 105mm projection



| | | |
|---|-------------------------------|---------------|
|  | Brushed Bronze | 83 590 979-42 |
|  | Chrome | 83 590 979-00 |
|  | Brushed Platinum | 83 590 979-06 |
|  | Dark Chrome | 83 590 979-19 |
|  | Light Gold | 83 590 979-26 |
|  | Brushed Light Gold | 83 590 979-27 |
|  | Matte Black | 83 590 979-33 |
|  | Brushed Dark Brass | 83 590 979-39 |
|  | Brushed Champagne (22kt Gold) | 83 590 979-46 |
|  | Champagne (22kt Gold) | 83 590 979-47 |
|  | Brushed Chrome | 83 590 979-93 |
|  | Brushed Dark Platinum | 83 590 979-99 |

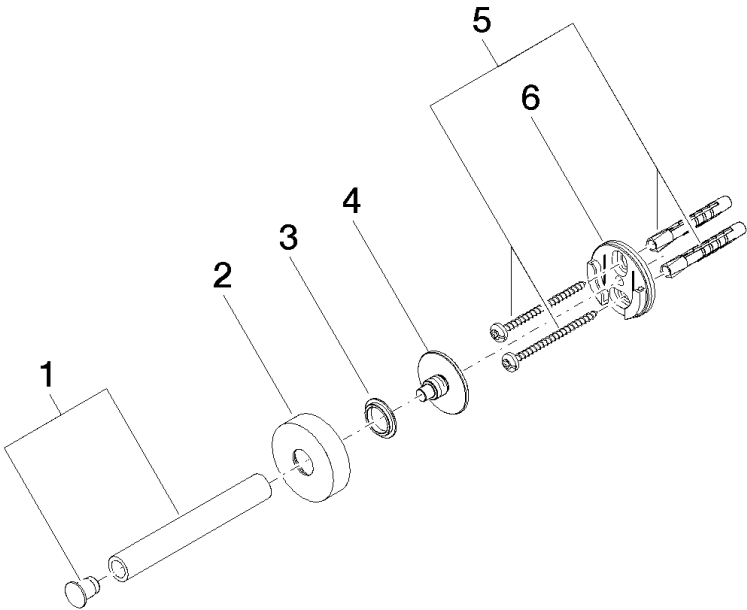
83 590 979 Product version from 7/1/2023

mm [inches]



83 590 979 Product version from 7/1/2023

Parts for other
finishes can be found
here: [Chrome](#)



Spare parts list

| No. | Item Number | Name | Quantity used | Delivery time |
|-----|--------------------|------------|---------------|---------------|
| 6 | 08 17 97 501 07 | holder | 3.00 | 2 |
| 2 | 08 27 97 500-42 | rosette | 1.00 | 60 |
| 3 | 08 30 11 516 90 | ring | 1.00 | 2 |
| 4 | 08 17 97 560 90 | holder | 1.00 | 2 |
| 5 | 05 30 31 025 00 90 | fixing set | 1.00 | 2 |
| 1 | 90 17 97 567 00-42 | holder | 1.00 | 30 |