

## TARA Toilet brush set wall model - Brushed Durabrass (23kt Gold)

TARA

83 900 892 Product version from 4/1/2024

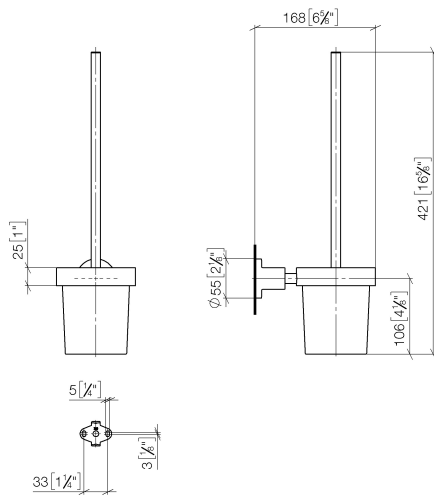


- crystal glass brush holder, matte
- brush, matte black
- width 110mm
- height 415 mm
- 180mm projection

|   |                               |               |
|---|-------------------------------|---------------|
|    | Brushed Durabrass (23kt Gold) | 83 900 892-28 |
|    | Chrome                        | 83 900 892-00 |
|    | Brushed Platinum              | 83 900 892-06 |
|    | Platinum                      | 83 900 892-08 |
|    | Dark Chrome                   | 83 900 892-19 |
|    | Matte Black                   | 83 900 892-33 |
|    | Brushed Dark Brass            | 83 900 892-39 |
|    | Brushed Bronze                | 83 900 892-42 |
|    | Brushed Champagne (22kt Gold) | 83 900 892-46 |
|   | Champagne (22kt Gold)         | 83 900 892-47 |
|  | Brushed Chrome                | 83 900 892-93 |
|  | Brushed Dark Platinum         | 83 900 892-99 |

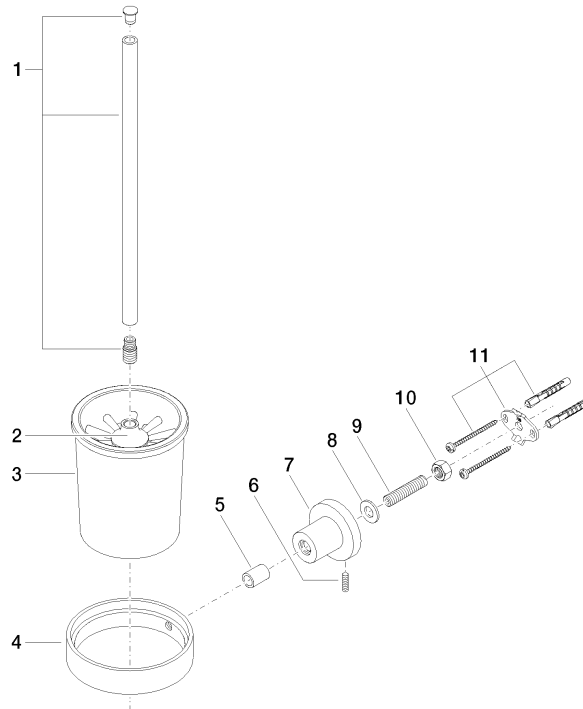
83 900 892 Product version from 4/1/2024

mm [inches]



83 900 892 Product version from 4/1/2024

Parts for other  
finishes can be found  
here: [Chrome](#)



## Spare parts list

| No. | Item Number           | Name       | Quantity used | Delivery time |
|-----|-----------------------|------------|---------------|---------------|
|     | 9 08 18 50 586 90     | screw      | 1.00          | 2             |
|     | 5 08 17 20 624-28     | holder     | 1.00          | 20            |
|     | 6 04 31 11 113 00 90  | pin        | 1.00          | 2             |
|     | 2 90 18 50 601 00 90  | brush      | 1.00          | 2             |
|     | 4 08 17 20 634-28     | holder     | 1.00          | 20            |
|     | 7 08 17 89 505-28     | holder     | 1.00          | 20            |
|     | 8 09 30 11 046 90     | disc       | 1.00          | 2             |
|     | 1 90 20 97 507 00-28  | handle     | 1.00          | 20            |
|     | 10 09 23 10 026 90    | nut        | 1.00          | 2             |
|     | 11 05 17 20 739 00 90 | fixing set | 1.00          | 2             |
|     | 3 90 90 04 008 00 82  | glass      | 1.00          | 2             |