

## TARA Showerpipe solution 220 mm - Brushed Dark Platinum

TARA

ST 050 305 2892



- shower with fixed riser projection 452mm
- Rain shower: PURE RAIN, max. flow rate 14 l/min (at 3 bar)
- rain shower Ø 220 mm
- rain shower with anti-scale system
- Hand shower: COMPACT RAIN, max. flow rate 6.8 l/min (at 3 bar)
- spray head Ø 100mm
- rotary diverter with volume control and shut-off function
- slide-on rosettes Ø 70 mm
- height of fittings up to rain shower (bottom edge) 963mm
- height of fittings up to top edge of elbow 1267mm
- gauge 150 mm - 13 mm
- metal shower hose 1750mm with integrated anti-twist protection
- 1/2" connection
- slide bar
- Pipe diameter 23.5 mm

	Brushed Dark Platinum	ST 050 305 2892-99 0050
	Chrome	ST 050 304 8892-00
	Chrome	ST 050 305 2892-00 0050
	Brushed Platinum	ST 050 304 8892-06
	Brushed Platinum	ST 050 305 2892-06 0050
	Platinum	ST 050 304 8892-08
	Platinum	ST 050 305 2892-08 0050
	Dark Chrome	ST 050 305 2892-19 0050
	Brushed Durabrass (23kt Gold)	ST 050 304 8892-28
	Brushed Durabrass (23kt Gold)	ST 050 305 2892-28 0050
	Matte Black	ST 050 304 8892-33
	Matte Black	ST 050 305 2892-33 0050
	Brushed Champagne (22kt Gold)	ST 050 305 2892-46 0050
	Champagne (22kt Gold)	ST 050 305 2892-47 0050
	Brushed Chrome	ST 050 305 2892-93 0050
	Brushed Dark Platinum	ST 050 304 8892-99

### Individual components of this set

You need the following components for this set



1x 34 459 892-99 0050



1x 28 025 979-99 0050

# TARA Showerpipe solution 220 mm - Brushed Dark Platinum

TARA

ST 050 305 2892



Fits: TARA, VAIA, META

- shower with fixed riser projection 452mm
- overhead shower: rain flow
- rain shower Ø 220 mm
- rain shower with anti-scale system
- max. rainshower flow 14 l/min
- rotary diverter with volume control and shut-off function
- slide-on rosettes Ø 70 mm
- height of fittings up to rain shower (bottom edge) 963mm
- height of fittings up to top edge of elbow 1267mm
- gauge 150 mm - 13 mm
- metal shower hose 1750mm with integrated anti-twist protection
- 1/2" connection
- slide bar
- Pipe diameter 23.5 mm
- quick clearing
- This product can help a building meet the requirements of Green Building Rating Systems, e.g. LEED®, BREEAM®, DGNB

This article does not include a hand shower!

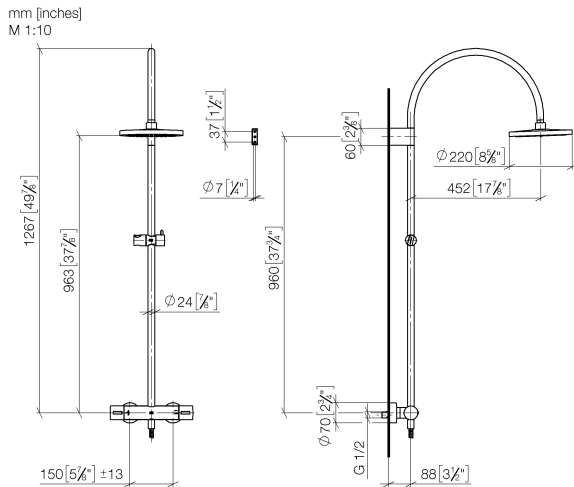
Intrinsic protection against back flow.

	Brushed Dark Platinum	34 459 892-99 005
	Chrome	34 459 892-0
	Chrome	34 459 892-00 005
	Brushed Platinum	34 459 892-0
	Brushed Platinum	34 459 892-06 005
	Platinum	34 459 892-0
	Platinum	34 459 892-08 005
	Dark Chrome	34 459 892-1
	Dark Chrome	34 459 892-19 005
	Brushed Light Gold	34 459 892-27 005
	Brushed Light Gold	34 459 892-2
	Brushed Durabrass (23kt Gold)	34 459 892-2
	Brushed Durabrass (23kt Gold)	34 459 892-28 005
	Matte Black	34 459 892-3
	Matte Black	34 459 892-33 005
	Brushed Bronze	34 459 892-4
	Brushed Bronze	34 459 892-42 005
	Brushed Champagne (22kt Gold)	34 459 892-4
	Brushed Champagne (22kt Gold)	34 459 892-46 005
	Champagne (22kt Gold)	34 459 892-4
	Champagne (22kt Gold)	34 459 892-47 005
	Brushed Chrome	34 459 892-9
	Brushed Chrome	34 459 892-93 005
	Brushed Dark Platinum	34 459 892-9

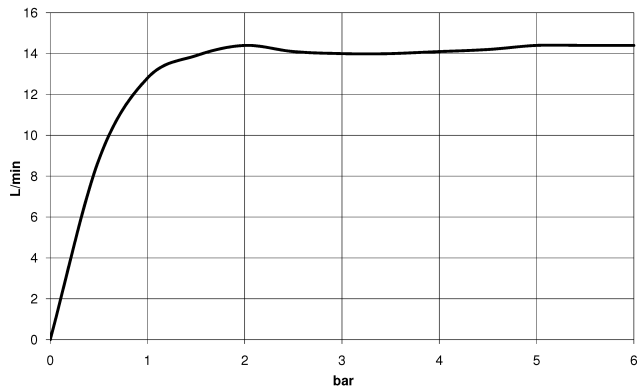
ST 050 305 2892

.0  
—  
.0  
—  
.0  
—  
.6  
—  
.0  
—  
.8  
—  
.0  
—  
9  
—  
.0  
—  
.0  
—  
.7  
—  
.8  
—  
.0  
—  
.3  
—  
.0  
—  
2  
—  
.0  
—  
.6  
—  
.0  
—  
.7  
—  
.0  
—  
.3  
—  
.0  
—  
9  
—

ST 050 305 2892



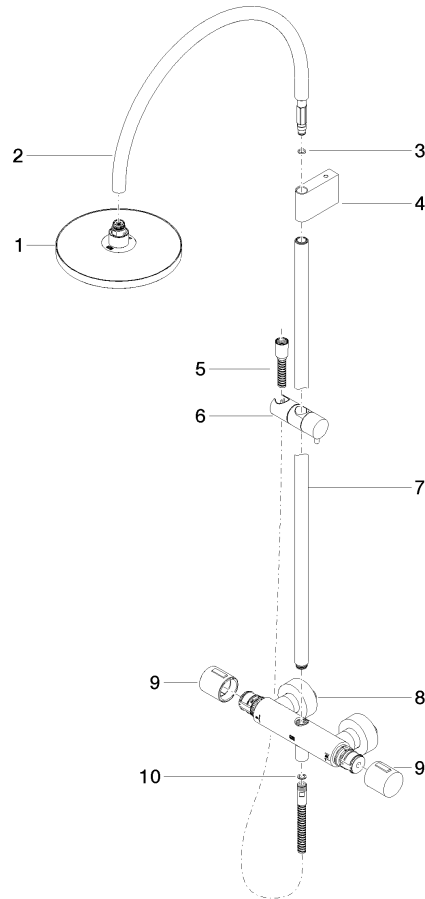
**Flow rate chart**





**Product version from 7/1/2022**

Parts for other  
finishes can be found  
here: [Chrome](#)





TARA Showerpipe solution 220 mm - Brushed Dark Platinum

TARA

ST 050 305 2892

Spare parts list

Product version from 7/1/2022

No.	Item Number	Name	Quantity used	Delivery time
	90 12 05 092 00-99	90120509200-99	11	60

## TARA Showerpipe solution 220 mm - Brushed Dark Platinum

TARA

ST 050 305 2892



- spray head Ø 100mm
- COMPACT RAIN, max. flow rate 5 l/min (at 3 bar)
- with anti-scale system
- 1/2" connection
- This product can help a building meet the requirements of Green Building Rating Systems, e.g. LEED®, BREEAM®, DGNB

Intrinsic protection against back flow.

Fits: IMO, LULU, MADISON, MEM, TARA, CL.1, LISSÉ, VAIA, META, CYO

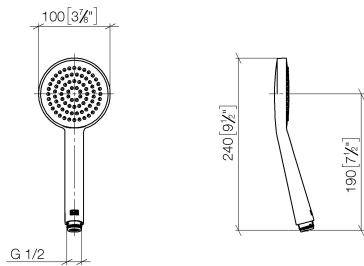
	Brushed Dark Platinum	28 025 979-99 005
	Chrome	28 025 979-00 005
	Brushed Platinum	28 025 979-06 005
	Platinum	28 025 979-08 005
	Dark Chrome	28 025 979-19 005
	Light Gold	28 025 979-26 005
	Brushed Durabronze (23kt Gold)	28 025 979-28 005
	Matte Black	28 025 979-33 005
	Brushed Champagne (22kt Gold)	28 025 979-46 005
	Champagne (22kt Gold)	28 025 979-47 005
	Brushed Chrome	28 025 979-93 005



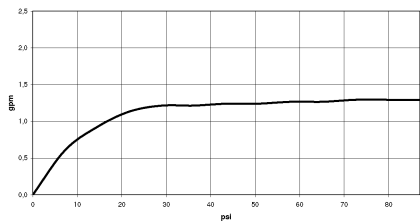


ST 050 305 2892

mm [inches]



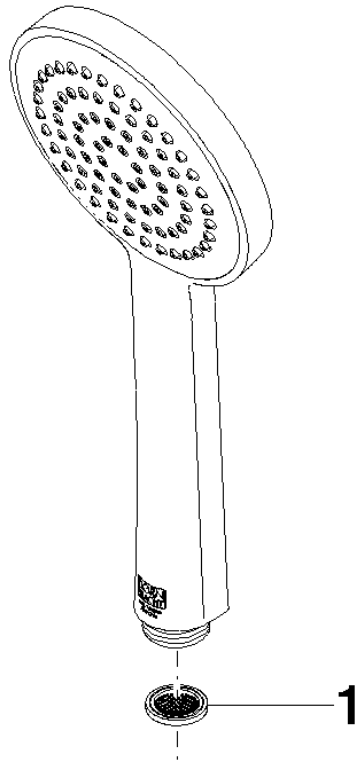
Flow rate chart





**Product version from 4/1/2023**

Parts for other  
finishes can be found  
here: [Chrome](#)





TARA Showerpipe solution 220 mm - Brushed Dark Platinum

TARA

ST 050 305 2892

**Spare parts list**

**Product version from 4/1/2023**

No.	Item Number	Name	Quantity used	Delivery time
	09 23 01 039 90	sieve	1	2