




Headshower solution - Chrome

IMO

ST 050 406 5845









	Chrome	ST 050 406 5845-00 0050
	Brushed Platinum	ST 050 406 5845-06 0050
	Matte Black	ST 050 406 5845-33 0050

Fits: IMO, LULU, MADISON, MEM, TARA,  
CL.1, LISSÉ, VAIA, META, CYO

Individual components of this set

You need the following components for this set

	1x	35 020 970 90		1x	35 085 970 90
	1x	12 380 970 90		1x	36 120 660-00
	1x	28 505 979-00 0050		1x	27 803 660-00 0050

ST 050 406 5845



- lead-free, dezincification resistant
- 2x back flow preventer
- 3x outlet G 1/2"
- 2x female thread 1/2" connections
- 2x integrated supply stop
- dust cover
- anti-water packing
- sound and thermal insulation
- gauge 60 mm
- WRAS 2207012

Recommended miscellaneous

Extension 25 mm -

12 191 970 90



Recommended miscellaneous

Extension 25 mm -

12 190 970 90



Recommended miscellaneous

xGRID Attachment set for  
integrating in the dry wall  
construction -

12 340 970 90



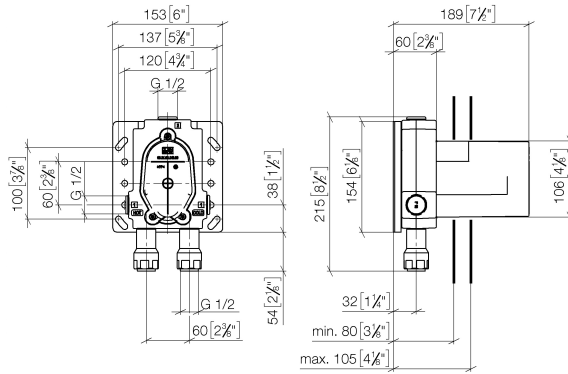
Required miscellaneous

xGRID Installation track 555 mm - 12 360 970 90

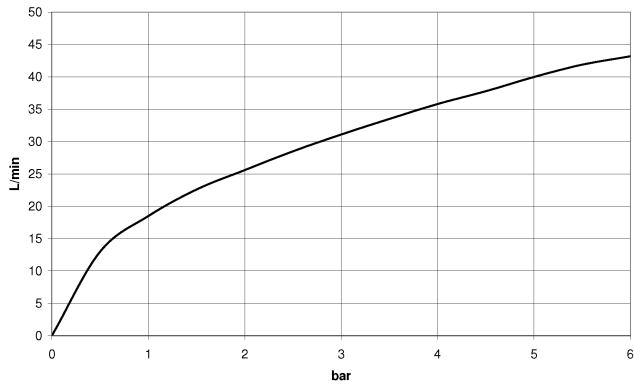


ST 050 406 5845

mm [inches]



## Flow rate chart



## Certificates

DVGW\_DW-  
6512DN0

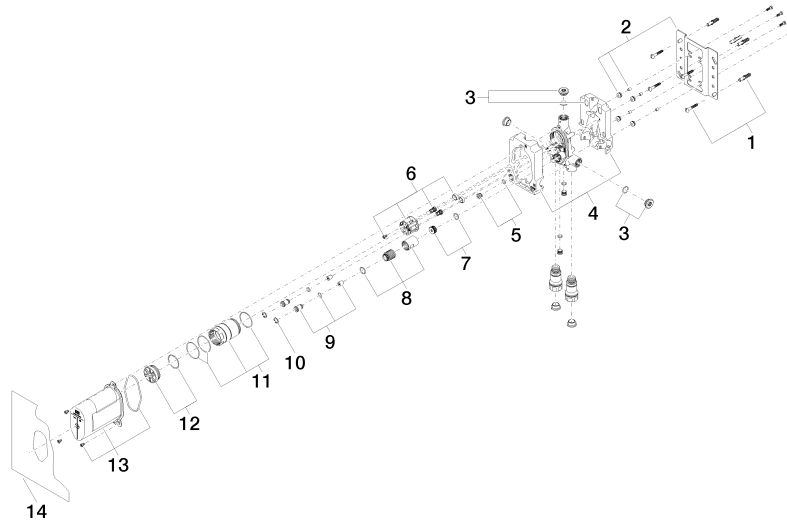
WRAS\_2207

LGA\_19

Codes & Standards

DIN 4109	EN 817	ISO 3822	Scottish Water Byelaws
UK Water Supply Regulations	Ü-Zeichen		







ST 050 406 5845

Spare parts list

No.	Item Number	Name	Quantity used	Delivery time
	04 30 31 024 01 90	fixing set	18	2



ST 050 406 5845



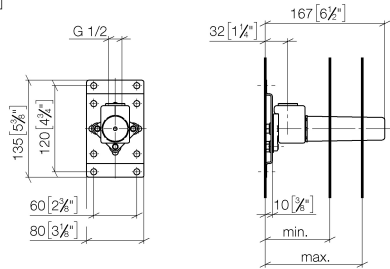
- red brass, lead-free
- female thread 1/2" connection
- 1x female thread 1/2" outlet
- dust cover
- anti-water packing
- soundproofing
- WRAS 240502014, 1904021

For wall-mounted spouts and wall outlet elbows with 1/2" connection.



ST 050 406 5845

mm [inches]



	min	max
CL. 1	90 [3 1/2"]	163 [6 3/8"]
CL. 2	68 [2 5/8"]	135 [5 3/8"]
Domicil	90 [3 1/2"]	163 [6 3/8"]
Gentle	90 [3 1/2"]	163 [6 3/8"]
IMO	90 [3 1/2"]	163 [6 3/8"]
Lissé	90 [3 1/2"]	163 [6 3/8"]
MEM	90 [3 1/2"]	163 [6 3/8"]
Symetrics	90 [3 1/2"]	163 [6 3/8"]
Vaia	90 [3 1/2"]	163 [6 3/8"]

Certificates

LGA\_29

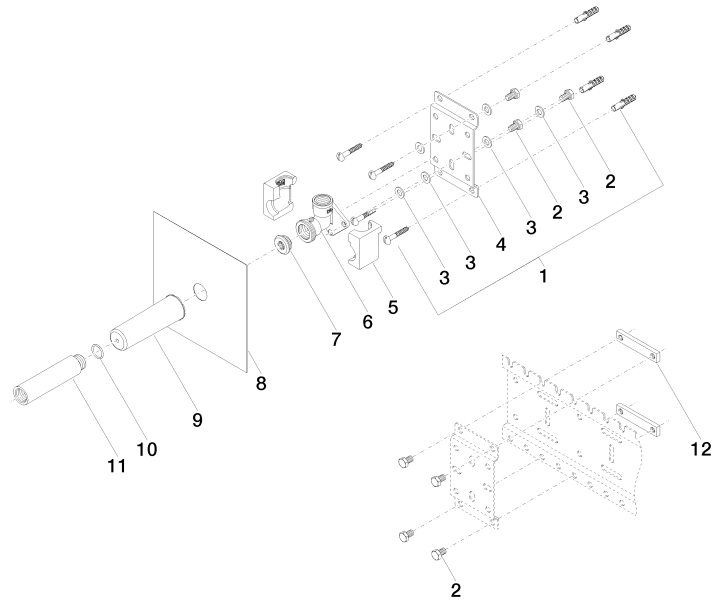
WRAS\_240502

Codes & Standards

DIN 4109	ISO 3822	Scottish Water Byelaws	UK Water Supply Regulations
----------	----------	---------------------------	--------------------------------

Ü-Zeichen

**Product version from 3/7/2023**





Headshower solution - Chrome

IMO

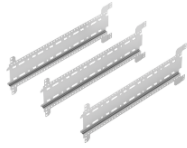
ST 050 406 5845

Spare parts list

Product version from 3/7/2023

No.	Item Number	Name	Quantity used	Delivery time
	04 30 31 024 01 90	fixing set	25	2

ST 050 406 5845



- width 555mm
- height 135 mm
- depth 12 mm
- retaining screws and plugs

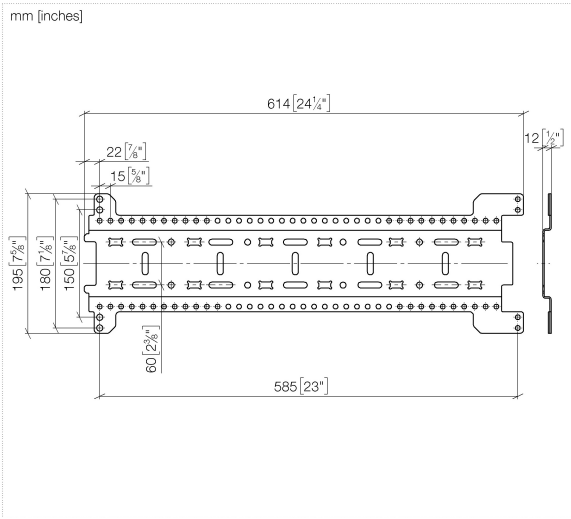
This set contains 3 xGrid installation tracks and includes fixing material

More about the xGRID installation track can be found in the Shower Book brochure

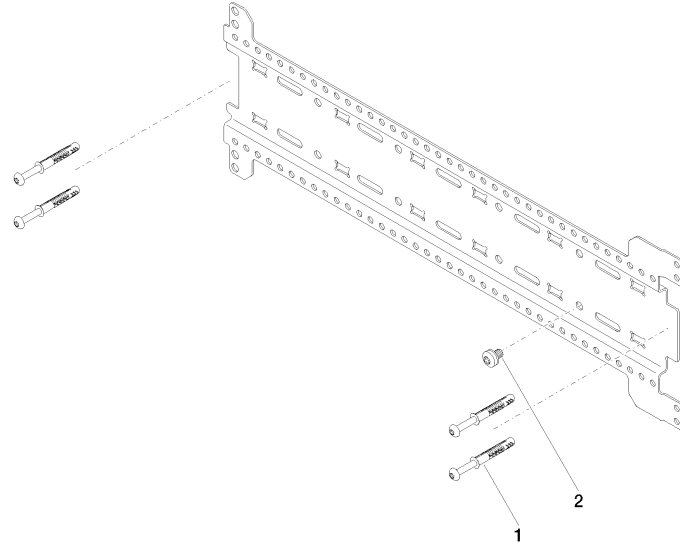




ST 050 406 5845









ST 050 406 5845

Spare parts list

No.	Item Number	Name	Quantity used	Delivery time
	04 30 31 054 00 90	fixing set	9	2

# Headshower solution - Chrome

IMO

ST 050 406 5845



Fits: TARA, META

- automatic diverter
- cover plate Ø 150 mm
- WRAS 2207012

	Chrome	36 120 660-0
	Brushed Platinum	36 120 660-0
	Platinum	36 120 660-0
	Dark Chrome	36 120 660-1
	Light Gold	36 120 660-2
	Brushed Light Gold	36 120 660-2
	Brushed Durabronze (23kt Gold)	36 120 660-2
	Matte Black	36 120 660-3
	Brushed Bronze	36 120 660-4
	Brushed Champagne (22kt Gold)	36 120 660-4
	Champagne (22kt Gold)	36 120 660-4
	Brushed Chrome	36 120 660-9
	Brushed Dark Platinum	36 120 660-9

ST 050 406 5845

0  
—  
6  
—  
8  
—  
9  
—  
6  
—  
7  
—  
8  
—  
3  
—  
2  
—  
6  
—  
7  
—  
3  
—  
9  
—

Required miscellaneous



**Concealed single-lever mixer with backflow preventor -** 35 021 970 90  
●max. recess depth 105 mm  
●min. recess depth 80 mm

Recommended miscellaneous



**xGRID Attachment set for integrating in the dry wall construction -** 12 340 970 90

Required miscellaneous



**Concealed single-lever mixer -** 35 020 970 90  
●max. recess depth 105 mm  
●min. recess depth 80 mm

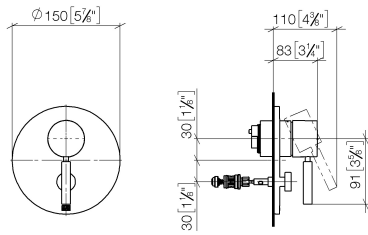
Required miscellaneous



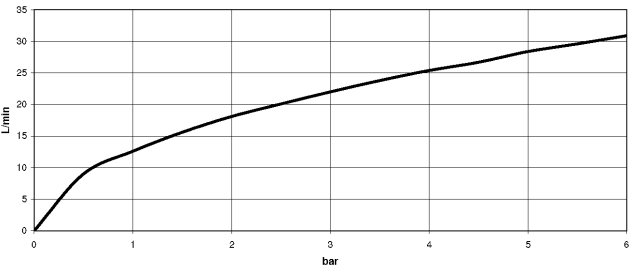
**xGRID Installation track 555 mm -** 12 360 970 90

ST 050 406 5845

mm [inches]



Flow rate chart



Certificates

DVGW\_DW-6512DN0      WRAS\_2207      LGA\_19

Codes & Standards

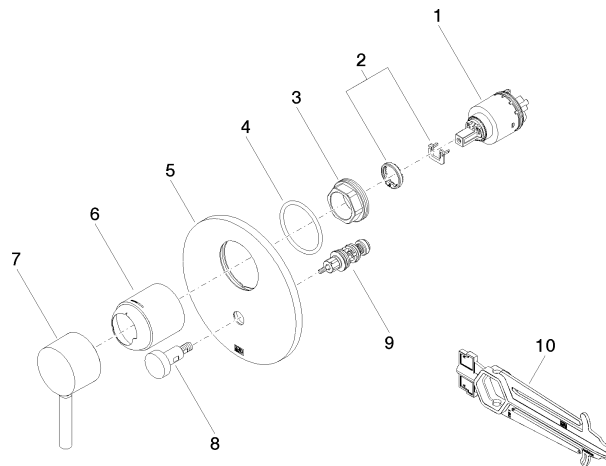
DIN 4109	EN 817	ISO 3822	Scottish Water Byelaws
UK Water Supply Regulations	Ü-Zeichen		





Product version up to 2/20/2020

**Product version from 2/20/2020**



ST 050 406 5845

Spare parts list

Product version up to 2/20/2020

Product version from 2/20/2020

No.	Item Number	Name	Quantity used	Delivery time
	90 15 05 038 00 90	cartridge	10	60

## Headshower solution - Chrome











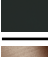

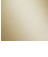

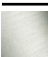
IMO

ST 050 406 5845



Fits: TARA, LISSÉ, VAIA, META

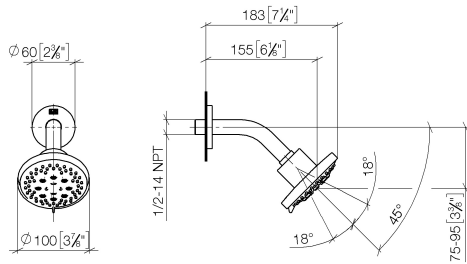
- 155mm projection
- ball-joint pivotable through 18° (in any direction)
- Three or five settings: PURIFY RAIN, COMPACT SOFT FLOW, COMPACT AQUAPRESSURE FLOW, max. flow rate 7.6 l/min (at 3 bar)
- with anti-scale system
- spray head Ø 100mm
- rosette Ø 60 mm
- 1/2" connection
- This product can help a building meet the requirements of Green Building Rating Systems, e.g. LEED®, BREEAM®, DGNB

	Chrome	28 505 979-00 005
	Brushed Platinum	28 505 979-06 005
	Platinum	28 505 979-08 005
	Dark Chrome	28 505 979-19 005
	Light Gold	28 505 979-26 005
	Light Gold	28 505 979-2
	Brushed Light Gold	28 505 979-27 005
	Brushed Light Gold	28 505 979-2
	Brushed Durabronze (23kt Gold)	28 505 979-28 005
	Matte Black	28 505 979-33 005
	Brushed Bronze	28 505 979-42 005
	Brushed Champagne (22kt Gold)	28 505 979-46 005
	Champagne (22kt Gold)	28 505 979-47 005
	Brushed Chrome	28 505 979-93 005
	Brushed Dark Platinum	28 505 979-99 005

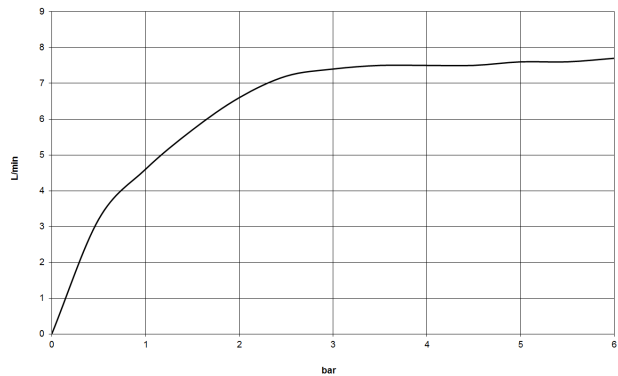


ST 050 406 5845

mm [inches]

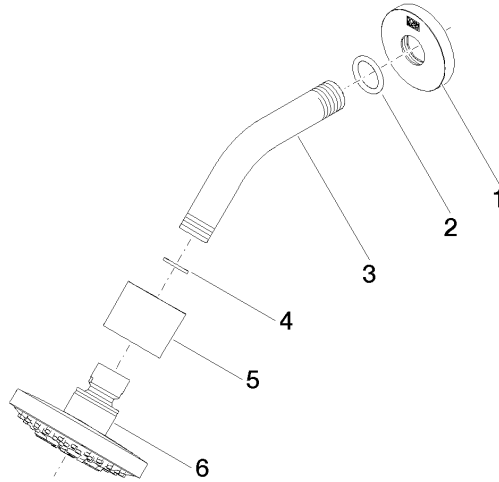


Flow rate chart





**Product version from 7/1/2022**







ST 050 406 5845

**Spare parts list**

**Product version from 7/1/2022**

No.	Item Number	Name	Quantity used	Delivery time
	09 27 22 045-00	rosette	6	10

## Headshower solution - Chrome

IMO

ST 050 406 5845



Fits: TARA, VAIA, META

- COMPACT RAIN, max. flow rate 6.8 l/min (at 3 bar)
- three settings: normal flow, soft flow, massage flow
- with anti-scale system
- 3/8" shower outlet
- metal shower hose 1250mm with integrated anti-twist protection
- rosette Ø 60 mm
- 1/2" connection
- This product can help a building meet the requirements of Green Building Rating Systems, e.g. LEED®, BREEAM®, DGNB

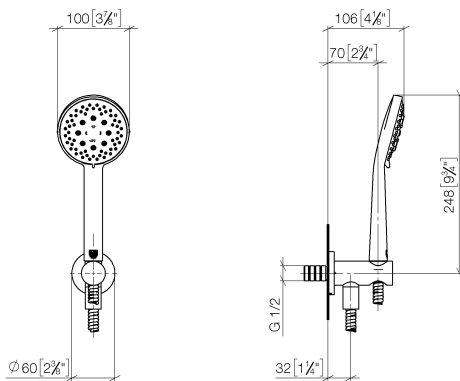
Intrinsic protection against back flow.

	Chrome	27 803 660-00 005
	Brushed Platinum	27 803 660-06 005
	Platinum	27 803 660-08 005
	Dark Chrome	27 803 660-19 005
	Light Gold	27 803 660-26 005
	Brushed Light Gold	27 803 660-27 005
	Brushed Durabronze (23kt Gold)	27 803 660-28 005
	Matte Black	27 803 660-33 005
	Brushed Bronze	27 803 660-42 005
	Brushed Champagne (22kt Gold)	27 803 660-46 005
	Champagne (22kt Gold)	27 803 660-47 005
	Brushed Chrome	27 803 660-93 005
	Brushed Dark Platinum	27 803 660-99 005

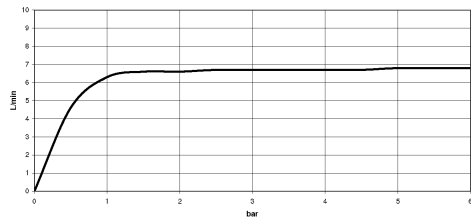


ST 050 406 5845

mm [inches]

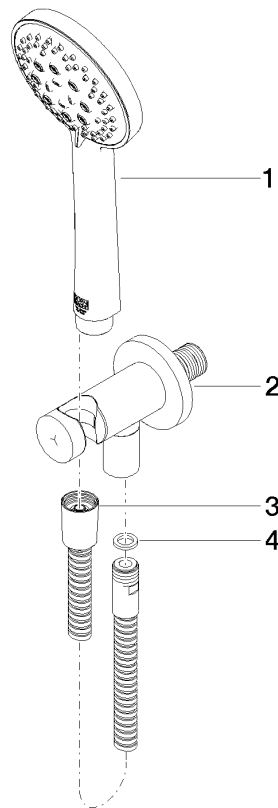


Flow rate chart





**Product version from 7/1/2022**





ST 050 406 5845

Spare parts list

Product version from 7/1/2022

No.	Item Number	Name	Quantity used	Delivery time
	28 014 979-00 0050	Hand shower 6.8 l/min - Chrome	4	-
	Spare part can no longer be ordered, please order the replacement item			
	28018979-000050	Hand shower - Chrome		