




ST 050 406 6845



	Chrome	ST 050 406 6845-00 0050
	Brushed Platinum	ST 050 406 6845-06 0050
	Dark Chrome	ST 050 406 6845-19 0050
	Matte Black	ST 050 406 6845-33 0050
	Brushed Chrome	ST 050 406 6845-93 0050

Individual components of this set

You need the following components for this set

	1x	35 020 970 90		1x	35 085 970 90
	1x	12 380 970 90		1x	36 120 845-00
	1x	28 505 979-00 0050		1x	27 803 845-00 0050


ST 050 406 6845




- lead-free, dezincification resistant
- 2x back flow preventer
- 3x outlet G 1/2"
- 2x female thread 1/2" connections
- 2x integrated supply stop
- dust cover
- anti-water packing
- sound and thermal insulation
- gauge 60 mm
- WRAS 2207012

ST 050 406 6845


Recommended miscellaneous

Extension 25 mm -		12 191 970 90
		

Recommended miscellaneous

xGRID Attachment set for integrating in the dry wall construction -		12 340 970 90
		

Recommended miscellaneous

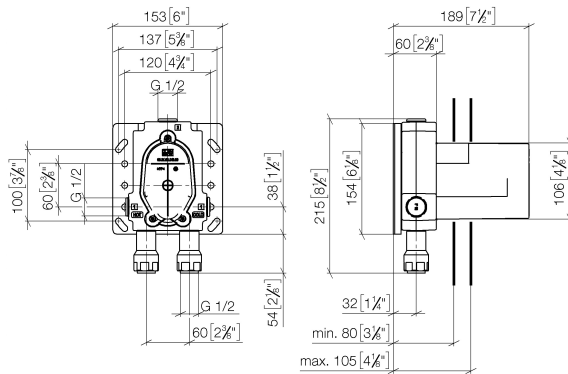
Extension 25 mm -		12 190 970 90
		

Required miscellaneous

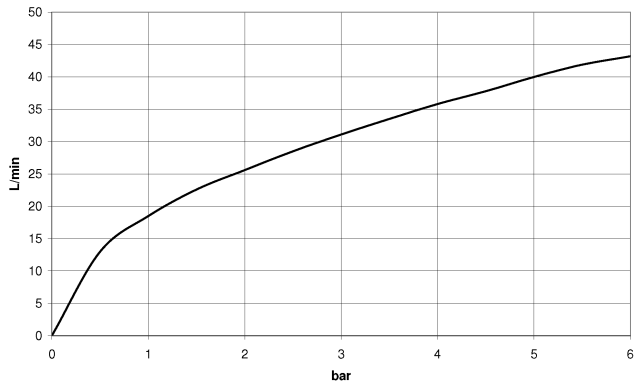
xGRID Installation track 555 mm -		12 360 970 90
		

ST 050 406 6845

mm [inches]



Flow rate chart



Certificates

DVGW_DW-
6512DN0

WRAS_2207

LGA_19

Codes & Standards

DIN 4109

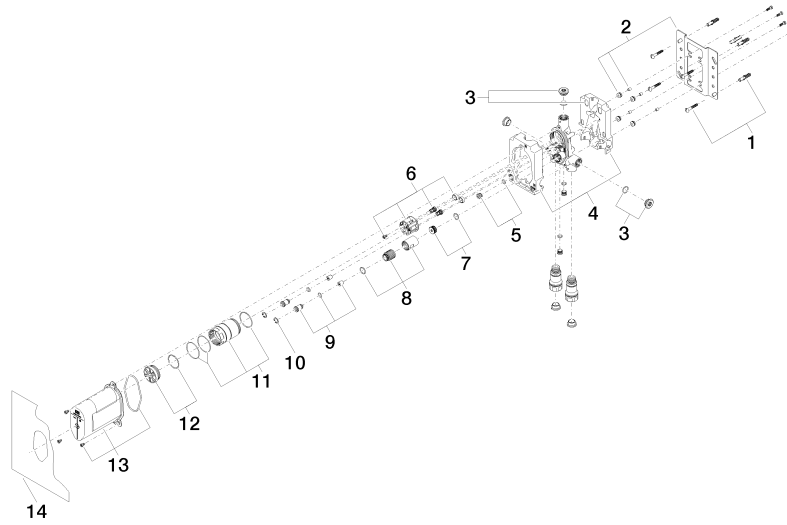
EN 817

ISO 3822

Scottish Water
Byelaws

UK Water Supply
Regulations

Ü-Zeichen





ST 050 406 6845

Spare parts list

No.	Item Number	Name	Quantity used	Delivery time
	04 30 31 024 01 90	fixing set	18	2

ST 050 406 6845

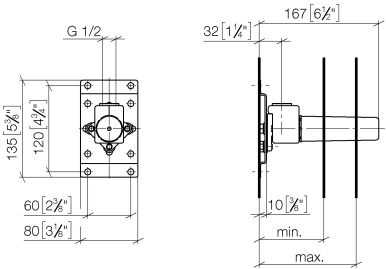


- red brass, lead-free
- female thread 1/2" connection
- 1x female thread 1/2" outlet
- dust cover
- anti-water packing
- soundproofing
- WRAS 240502014, 1904021

For wall-mounted spouts and wall outlet elbows with 1/2" connection.

ST 050 406 6845

mm [inches]



	min	max
CL. 1	90 [3 1/2"]	163 [6 3/8"]
CL. 2	68 [2 5/8"]	135 [5 3/8"]
Domicil	90 [3 1/2"]	163 [6 3/8"]
Gentle	90 [3 1/2"]	163 [6 3/8"]
IMO	90 [3 1/2"]	163 [6 3/8"]
Lissé	90 [3 1/2"]	163 [6 3/8"]
MEM	90 [3 1/2"]	163 [6 3/8"]
Symetrics	90 [3 1/2"]	163 [6 3/8"]
Vaia	90 [3 1/2"]	163 [6 3/8"]

Certificates

LGA_29

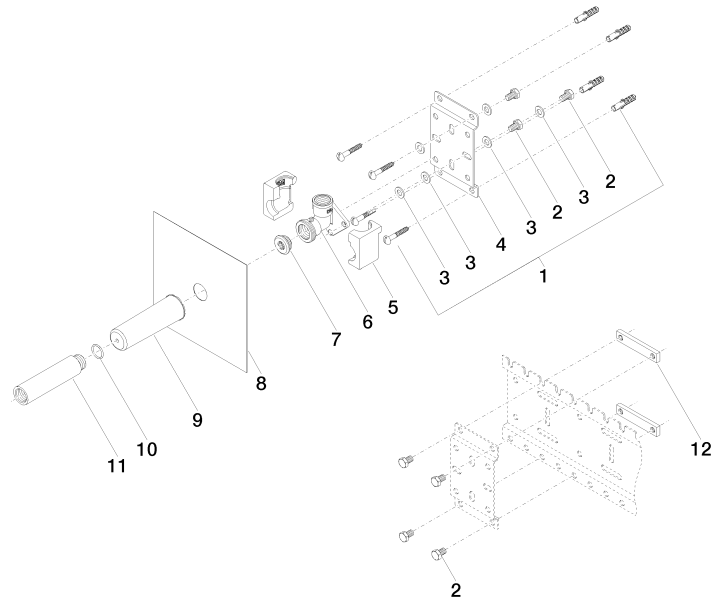
WRAS_240502

Codes & Standards

DIN 4109	ISO 3822	Scottish Water Byelaws	UK Water Supply Regulations
----------	----------	---------------------------	--------------------------------

Ü-Zeichen

Product version from 3/7/2023





Headshower solution - Chrome

LISSE

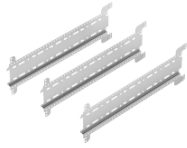
ST 050 406 6845

Spare parts list

Product version from 3/7/2023

No.	Item Number	Name	Quantity used	Delivery time
	04 30 31 024 01 90	fixing set	25	2

ST 050 406 6845

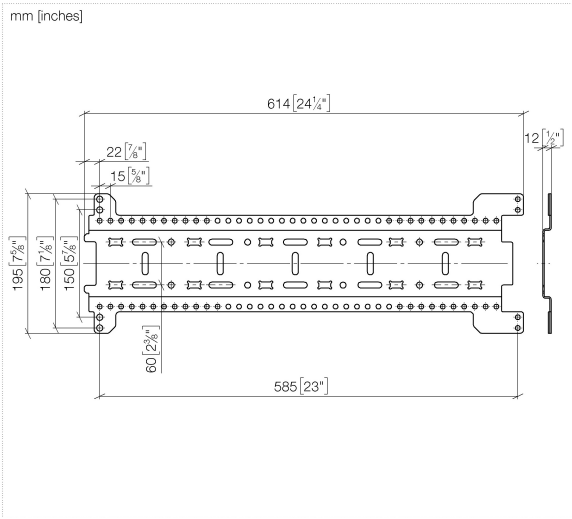


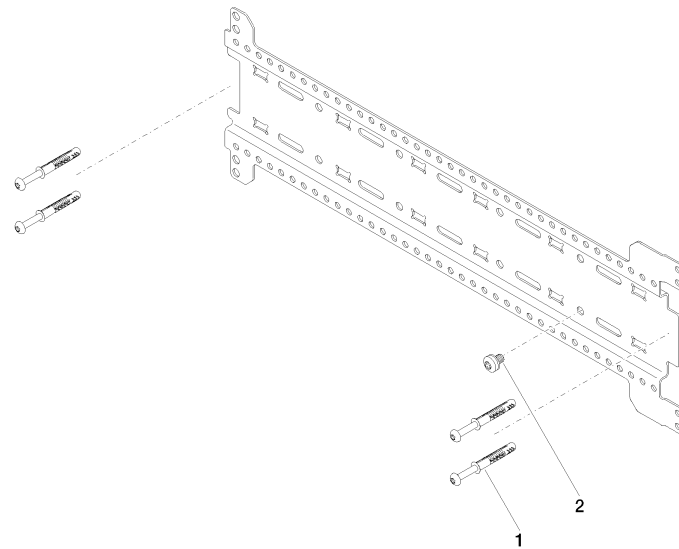
- width 555mm
- height 135 mm
- depth 12 mm
- retaining screws and plugs

This set contains 3 xGrid installation tracks and includes fixing material

More about the xGRID installation track can be found in the Shower Book brochure

ST 050 406 6845





ST 050 406 6845

Spare parts list

No.	Item Number	Name	Quantity used	Delivery time
	04 30 31 054 00 90	fixing set	9	2







Headshower solution - Chrome

LISSE

ST 050 406 6845



- automatic diverter
- cover plate 150 x 90 mm
- WRAS 2207012

	Chrome	36 120 845-0
	Brushed Platinum	36 120 845-0
	Dark Chrome	36 120 845-1
	Matte Black	36 120 845-3
	Brushed Chrome	36 120 845-9
	Brushed Dark Platinum	36 120 845-9

ST 050 406 6845

0

—

6

—

9

—

:3

—


:3

—

:9

—

Required miscellaneous




Concealed single-lever mixer with backflow preventor -

35 021 970 90

●max. recess depth 105 mm

●min. recess depth 80 mm


Recommended miscellaneous



xGRID Attachment set for integrating in the dry wall construction -

12 340 970 90

Required miscellaneous



Concealed single-lever mixer -

35 020 970 90

●max. recess depth 105 mm

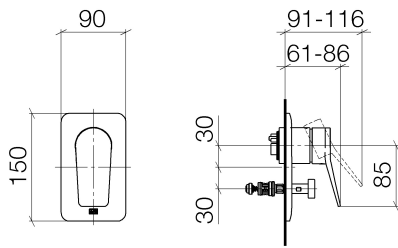
●min. recess depth 80 mm

Required miscellaneous

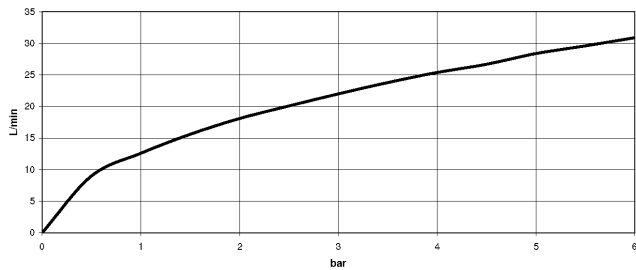


xGRID Installation track 555 mm -

12 360 970 90



Flow rate chart



Certificates

WRAS_2207

LGA_19

Codes & Standards

DIN 4109

ISO 3822

Scottish Water
Byelaws

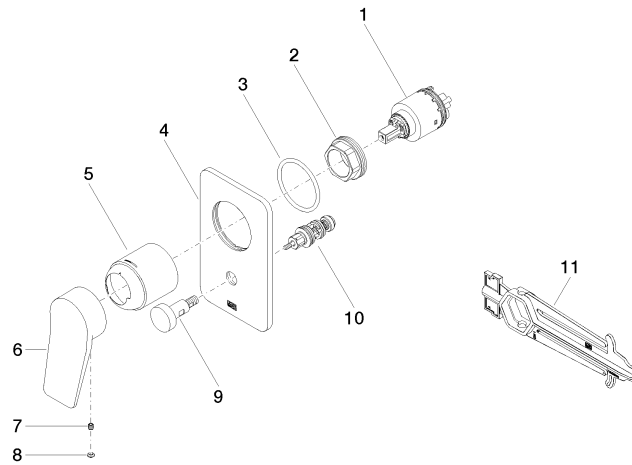
UK Water Supply
Regulations

Ü-Zeichen

ST 050 406 6845

Product version from 3/9/2016 to 2/20/2020

Product version from 2/20/2020



ST 050 406 6845

Spare parts list

Product version from 3/9/2016 to 2/20/2020

Product version from 2/20/2020

No.	Item Number	Name	Quantity used	Delivery time
	90 15 05 039 00 90	cartridge	11	2

Headshower solution - Chrome

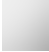











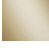


LISSE

ST 050 406 6845



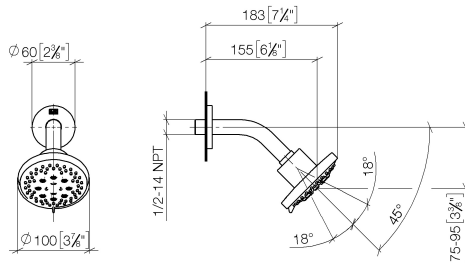
Fits: TARA, LISSE, VAIA, META

- 155mm projection
- ball-joint pivotable through 18° (in any direction)
- Three or five settings: PURIFY RAIN, COMPACT SOFT FLOW, COMPACT AQUAPRESSURE FLOW, max. flow rate 7.6 l/min (at 3 bar)
- with anti-scale system
- spray head Ø 100mm
- rosette Ø 60 mm
- 1/2" connection
- This product can help a building meet the requirements of Green Building Rating Systems, e.g. LEED®, BREEAM®, DGNB

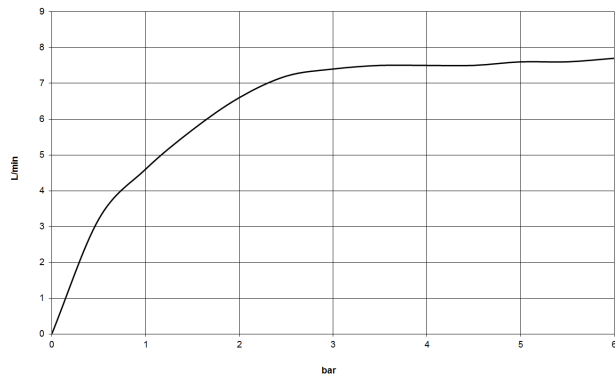
	Chrome	28 505 979-00 005
	Brushed Platinum	28 505 979-06 005
	Platinum	28 505 979-08 005
	Dark Chrome	28 505 979-19 005
	Light Gold	28 505 979-26 005
	Light Gold	28 505 979-2
	Brushed Light Gold	28 505 979-27 005
	Brushed Light Gold	28 505 979-2
	Brushed Durabronze (23kt Gold)	28 505 979-28 005
	Matte Black	28 505 979-33 005
	Brushed Bronze	28 505 979-42 005
	Brushed Champagne (22kt Gold)	28 505 979-46 005
	Champagne (22kt Gold)	28 505 979-47 005
	Brushed Chrome	28 505 979-93 005
	Brushed Dark Platinum	28 505 979-99 005

ST 050 406 6845

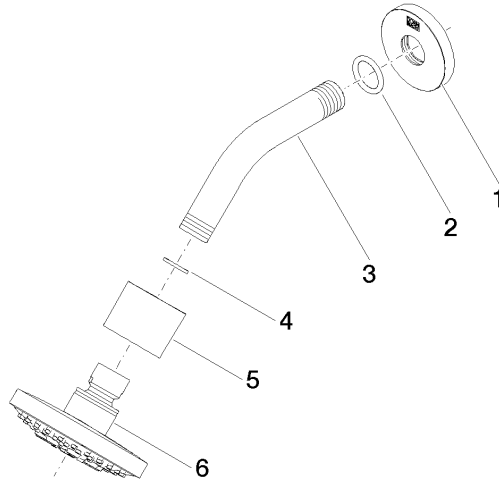
mm [inches]



Flow rate chart



Product version from 7/1/2022





ST 050 406 6845

Spare parts list

Product version from 7/1/2022

No.	Item Number	Name	Quantity used	Delivery time
	09 27 22 045-00	rosette	6	10

Headshower solution - Chrome







LISSE

ST 050 406 6845



- COMPACT RAIN, max. flow rate 6.8 l/min (at 3 bar)
- three settings: normal flow, soft flow, massage flow
- with anti-scale system
- 3/8" shower outlet
- rosette for wall elbow 60 x 78mm
- rosette for shower holder 60 x 78mm
- metal shower hose 1250mm with integrated anti-twist protection
- 1/2" wall elbow
- This product can help a building meet the requirements of Green Building Rating Systems, e.g. LEED®, BREEAM®, DGNB

Intrinsic protection against back flow.

	Chrome	27 803 845-00 005
	Brushed Platinum	27 803 845-06 005
	Dark Chrome	27 803 845-19 005
	Matte Black	27 803 845-33 005
	Brushed Chrome	27 803 845-93 005
	Brushed Dark Platinum	27 803 845-99 005

ST 050 406 6845

0
—
0
—
0
—
0
—
0
—
0

Recommended miscellaneous



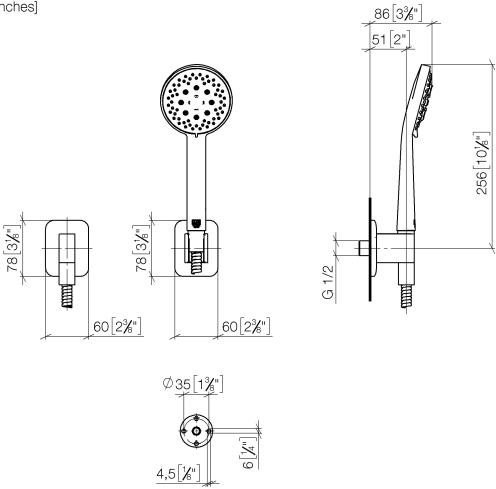
Concealed wall elbow -

- max. recess depth 163 mm
- min. recess depth 90 mm

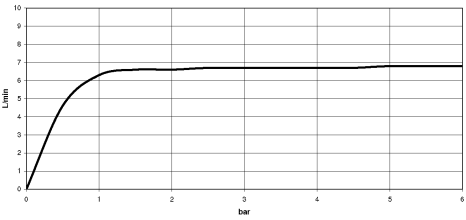
35 085 970 90

ST 050 406 6845

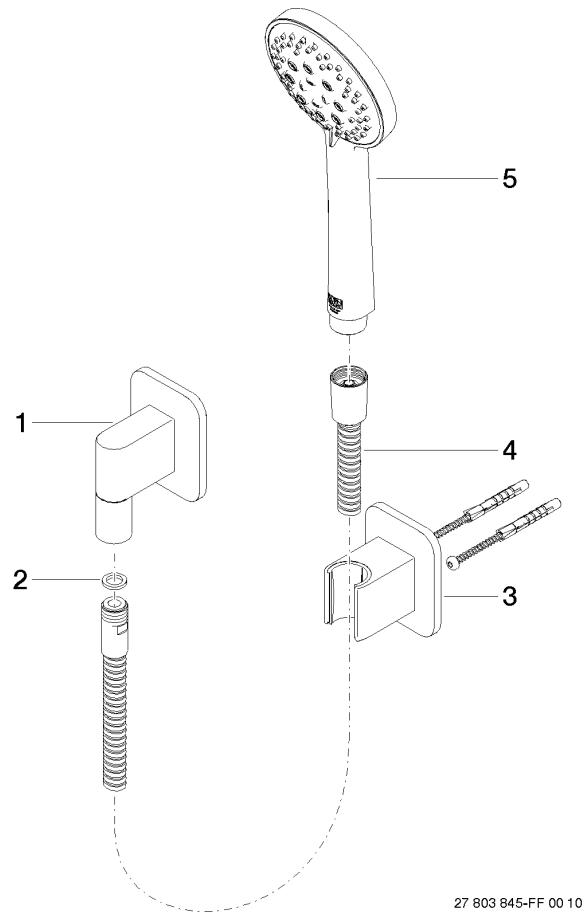
mm [inches]



Flow rate chart



Product version from 7/1/2022



27 803 845-FF 00 10



ST 050 406 6845

Spare parts list

Product version from 7/1/2022

No.	Item Number	Name	Quantity used	Delivery time
	28 450 845-00	LISSE Wall elbow - Chrome	5	10