

TARA Headshower solution - Chrome

TARA



ST 050 407 1970






	Chrome	ST 050 407 1970-00 0050
	Brushed Platinum	ST 050 407 1970-06 0050
	Platinum	ST 050 407 1970-08 0050
	Dark Chrome	ST 050 407 1970-19 0050
	Matte Black	ST 050 407 1970-33 0050
	Brushed Champagne (22kt Gold)	ST 050 407 1970-46 0050
	Champagne (22kt Gold)	ST 050 407 1970-47 0050
	Brushed Chrome	ST 050 407 1970-93 0050
	Brushed Dark Platinum	ST 050 407 1970-99 0050

Individual components of this set

You need the following components for this set

	1x	35 085 970 90
	1x	12 380 970 90
	1x	28 508 979-00 0050

	1x	35 425 970 90
	1x	36 426 970-00
	1x	27 803 892-00 0050

ST 050 407 1970

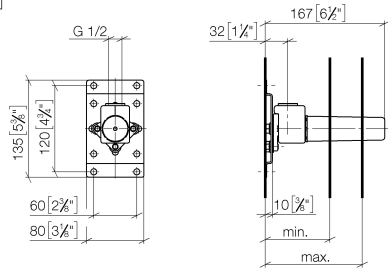


- red brass, lead-free
- female thread 1/2" connection
- 1x female thread 1/2" outlet
- dust cover
- anti-water packing
- soundproofing
- WRAS 240502014, 1904021

For wall-mounted spouts and wall outlet elbows with 1/2" connection.

ST 050 407 1970

mm [inches]



	min	max
CL. 1	90 [3 1/2"]	163 [6 3/8"]
CL. 2	68 [2 5/8"]	135 [5 3/8"]
Domicil	90 [3 1/2"]	163 [6 3/8"]
Gentle	90 [3 1/2"]	163 [6 3/8"]
IMO	90 [3 1/2"]	163 [6 3/8"]
Lissé	90 [3 1/2"]	163 [6 3/8"]
MEM	90 [3 1/2"]	163 [6 3/8"]
Symetrics	90 [3 1/2"]	163 [6 3/8"]
Vaia	90 [3 1/2"]	163 [6 3/8"]

Certificates

LGA_29

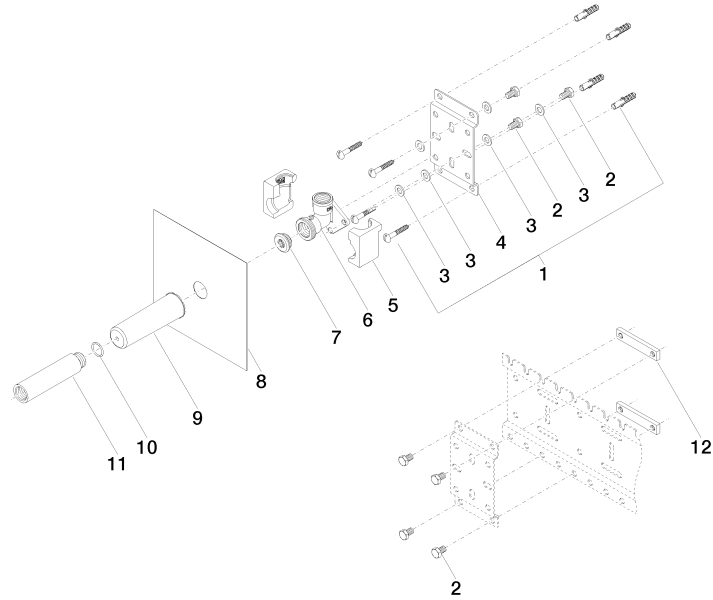
WRAS_240502

Codes & Standards

DIN 4109	ISO 3822	Scottish Water Byelaws	UK Water Supply Regulations
----------	----------	---------------------------	--------------------------------

Ü-Zeichen

Product version from 3/7/2023





TARA Headshower solution - Chrome

TARA

ST 050 407 1970

Spare parts list

Product version from 3/7/2023

No.	Item Number	Name	Quantity used	Delivery time
	04 30 31 024 01 90	fixing set	25	2

ST 050 407 1970



- lead-free, dezincification resistant
- 2x back flow preventer
- 2x female thread 1/2" connections
- 3x outlet G 1/2"
- dust cover
- anti-water packing
- sound and thermal insulation
- suitable for xGRID (when using installation track + 12 mm recess depth)
- gauge 70 mm
- WRAS 1906098

Recommended miscellaneous



**xGRID Attachment set for
integrating in the dry wall
construction -**

12 340 970 90

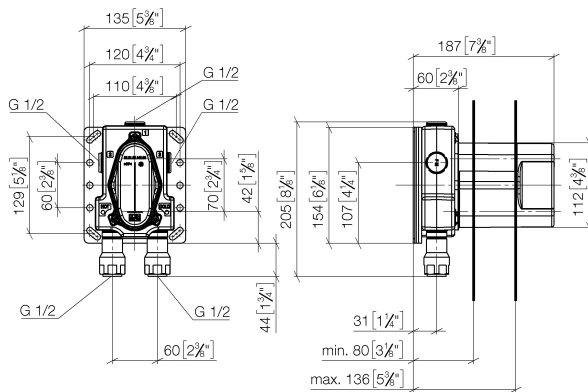
Required miscellaneous



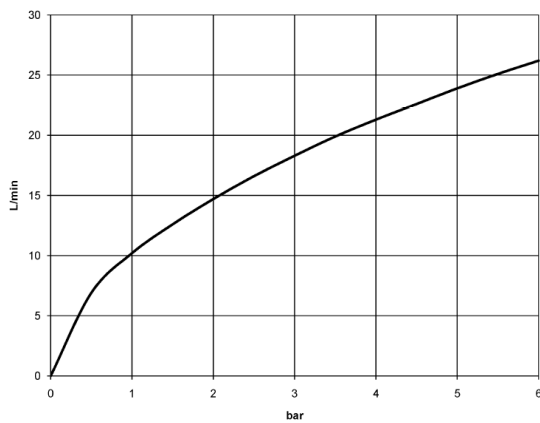
xGRID Installation track 555 mm - 12 360 970 90

ST 050 407 1970

mm [inches]



Flow rate chart



Certificates

WRAS_1906

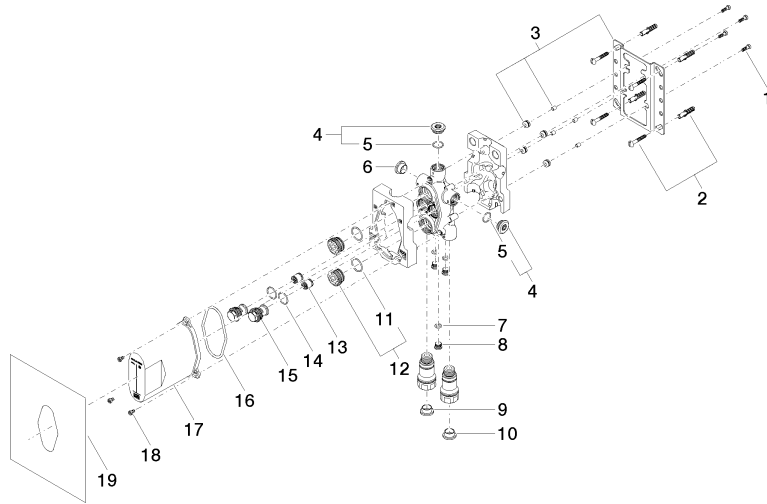
DVGW_DW-
6512DN0

Belgaqua_21-031-2 ETA_20

Codes & Standards

EN 1111	EN 1717	Scottish Water Byelaws	UK Water Supply Regulations
---------	---------	---------------------------	--------------------------------

VA-Zeichen



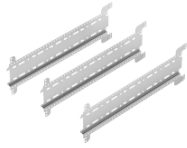


ST 050 407 1970

Spare parts list

No.	Item Number	Name	Quantity used	Delivery time
	09 30 30 171 90	screw	35	2

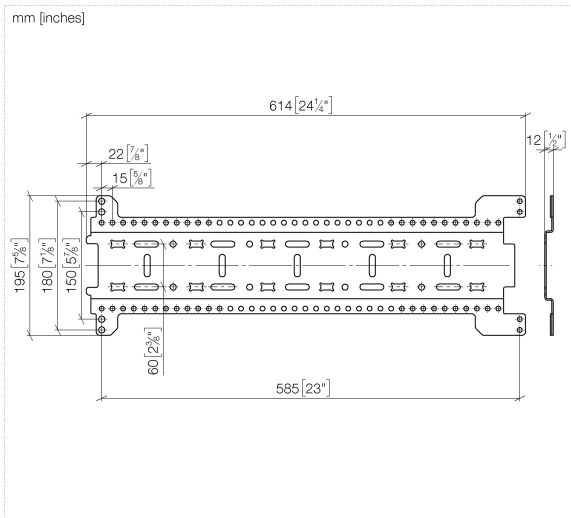
ST 050 407 1970

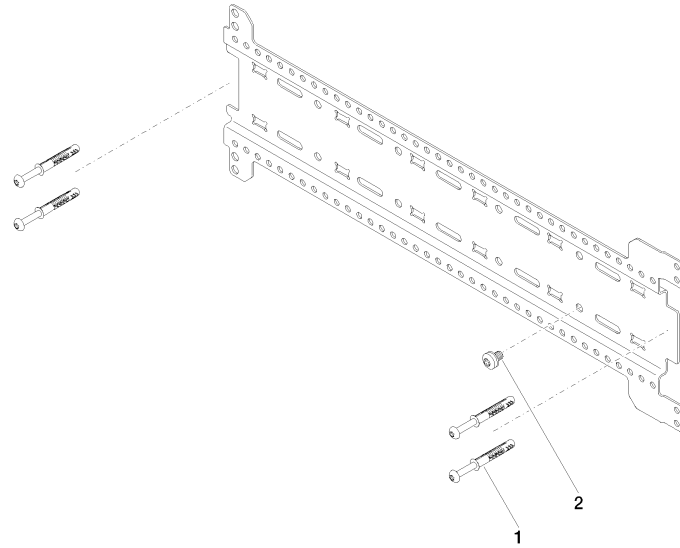


- width 555mm
- height 135 mm
- depth 12 mm
- retaining screws and plugs

This set contains 3 xGrid installation tracks and includes fixing material

More about the xGRID installation track can be found in the Shower Book brochure







TARA Headshower solution - Chrome

TARA

ST 050 407 1970

Spare parts list

No.	Item Number	Name	Quantity used	Delivery time
	04 30 31 054 00 90	fixing set	9	2

ST 050 407 1970



- rotary diverter with volume control and shut-off function
- cover plate Ø 150 mm
- temperature control handle with safety limit stop at 38°C
- hot water temperature limiter, can be preset
- WRAS 1906098

	Chrome	36 426 970-0
	Brushed Platinum	36 426 970-0
	Platinum	36 426 970-0
	Dark Chrome	36 426 970-1
	Light Gold	36 426 970-2
	Brushed Light Gold	36 426 970-2
	Brushed Durabronze (23kt Gold)	36 426 970-2
	Matte Black	36 426 970-3
	Brushed Bronze	36 426 970-4
	Brushed Champagne (22kt Gold)	36 426 970-4
	Champagne (22kt Gold)	36 426 970-4
	Brushed Chrome	36 426 970-9
	Brushed Dark Platinum	36 426 970-9

ST 050 407 1970

0
—
6
—
8
—
9
—
6
—
7
—
8
—
3
—
2
—
6
—
7
—
3
—
9
—

Required miscellaneous



Concealed thermostat -
●max. recess depth 136 mm
●min. recess depth 80 mm

35 425 970 90

Recommended miscellaneous



**xGRID Attachment set for
integrating in the dry wall
construction -**

12 340 970 90

Required miscellaneous



**Concealed thermostat with built-in
isolators -**
●max. recess depth 136 mm
●min. recess depth 80 mm

35 426 970 90

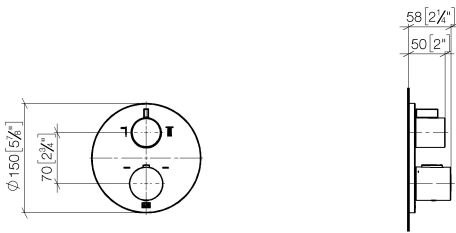
Required miscellaneous



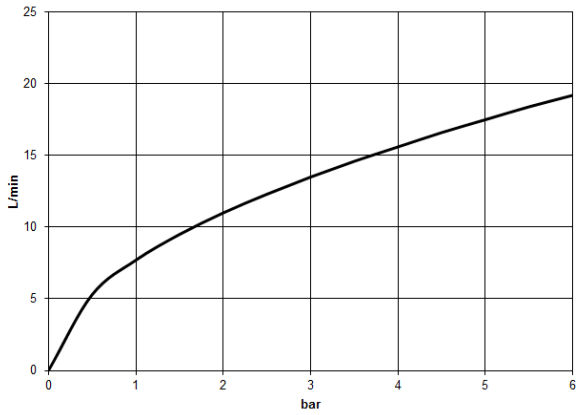
xGRID Installation track 555 mm - 12 360 970 90

ST 050 407 1970

mm [inches]



Flow rate chart



Certificates

WRAS_1906

LGA_19

DVGW_DW-
6512DN0

ACS_20 ACC LY

LGA_19

ETA_20

Codes & Standards

DIN 4109	EN 1111	ISO 3822	Scottish Water Byelaws
UK Water Supply Regulations	Ü-Zeichen	VA-Zeichen	XP P 41-280

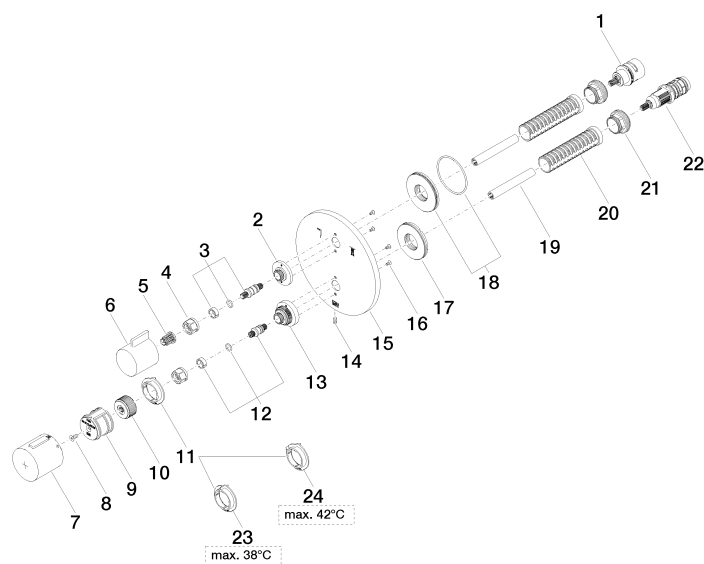
ST 050 407 1970

Product version up to 8/24/2020

Product version from 8/24/2020 to 2/1/2021

Product version from 2/1/2021 to 6/30/2022

Product version from 6/30/2022



ST 050 407 1970

Spare parts list

Product version up to 8/24/2020

Product version from 8/24/2020 to 2/1/2021

Product version from 2/1/2021 to 6/30/2022

Product version from 6/30/2022

No.	Item Number	Name	Quantity used	Delivery time
	90 90 03 163 00 90	diverter	31	2

TARA Headshower solution - Chrome

TARA

ST 050 407 1970



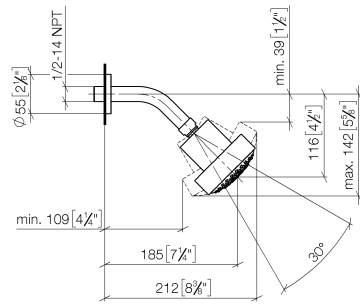
Fits: TARA, LISSÉ, VAIA, META

- 200mm projection
- ball-joint pivotable through 30°
- Three settings: PURIFY RAIN, COMPACT SOFT FLOW, COMPACT AQUAPRESSURE FLOW, max. flow rate 9 l/min (at 3 bar)
- with anti-scale system
- spray head Ø 92mm
- rosette Ø 55 mm
- 1/2" connection
- This product can help a building meet the requirements of Green Building Rating Systems, e.g. LEED®, BREEAM®, DGNB

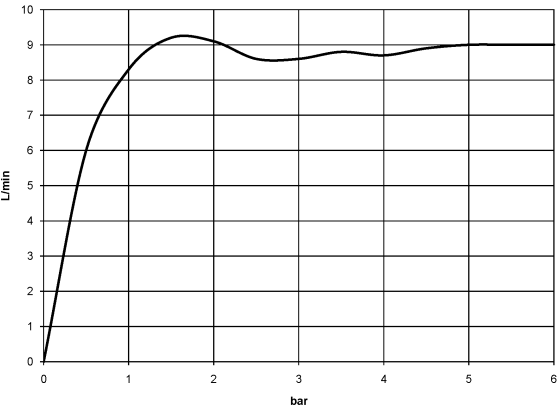
	Chrome	28 508 979-00 005
	Brushed Platinum	28 508 979-06 005
	Platinum	28 508 979-08 005
	Dark Chrome	28 508 979-19 005
	Light Gold	28 508 979-26 005
	Brushed Light Gold	28 508 979-27 005
	Brushed Durabronze (23kt Gold)	28 508 979-28 005
	Matte Black	28 508 979-33 005
	Brushed Bronze	28 508 979-42 005
	Brushed Champagne (22kt Gold)	28 508 979-46 005
	Champagne (22kt Gold)	28 508 979-47 005
	Brushed Chrome	28 508 979-93 005
	Brushed Dark Platinum	28 508 979-99 005

ST 050 407 1970

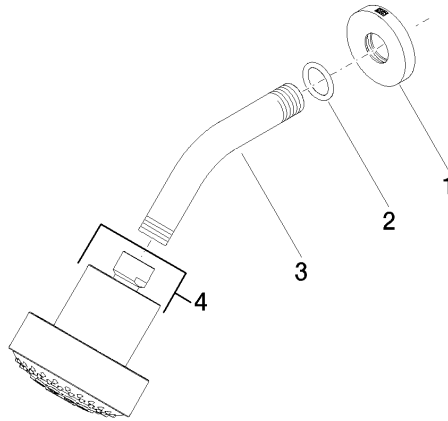
mm [inches]



Flow rate chart



Product version from 7/1/2022



ST 050 407 1970

Spare parts list

Product version from 7/1/2022

No.	Item Number	Name	Quantity used	Delivery time
	09 27 22 019-00	rosette	4	10

TARA Headshower solution - Chrome

TARA

ST 050 407 1970



- COMPACT RAIN, max. flow rate 6.8 l/min (at 3 bar)
- three settings: normal flow, soft flow, massage flow
- with anti-scale system
- 1/2" shower outlet
- rosette for wall elbow Ø 55mm
- rosette for shower holder Ø 55mm
- metal shower hose 1250mm with integrated anti-twist protection
- 1/2" wall elbow
- This product can help a building meet the requirements of Green Building Rating Systems, e.g. LEED®, BREEAM®, DGNB

Intrinsic protection against back flow.

	Chrome	27 803 892-00 005
	Brushed Platinum	27 803 892-06 005
	Platinum	27 803 892-08 005
	Dark Chrome	27 803 892-19 005
	Brushed Durabronze (23kt Gold)	27 803 892-28 005
	Matte Black	27 803 892-33 005
	Brushed Bronze	27 803 892-42 005
	Brushed Champagne (22kt Gold)	27 803 892-46 005
	Champagne (22kt Gold)	27 803 892-47 005
	Brushed Chrome	27 803 892-93 005
	Brushed Dark Platinum	27 803 892-99 005

ST 050 407 1970

i0 —
i0 —
i0 —
i0 —
i0 —
i0 —
i0 —
i0 —
i0 —
i0 —

Recommended miscellaneous



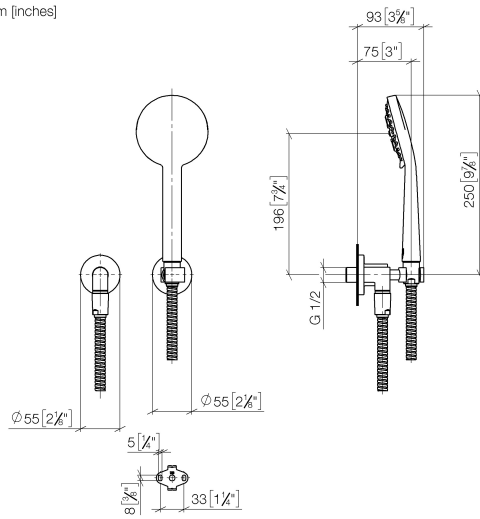
Concealed wall elbow -

- max. recess depth 163 mm
- min. recess depth 90 mm

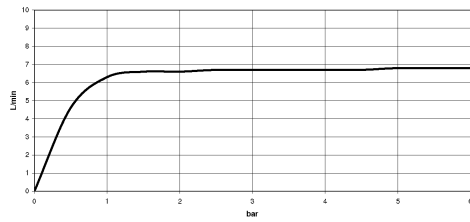
35 085 970 90

ST 050 407 1970

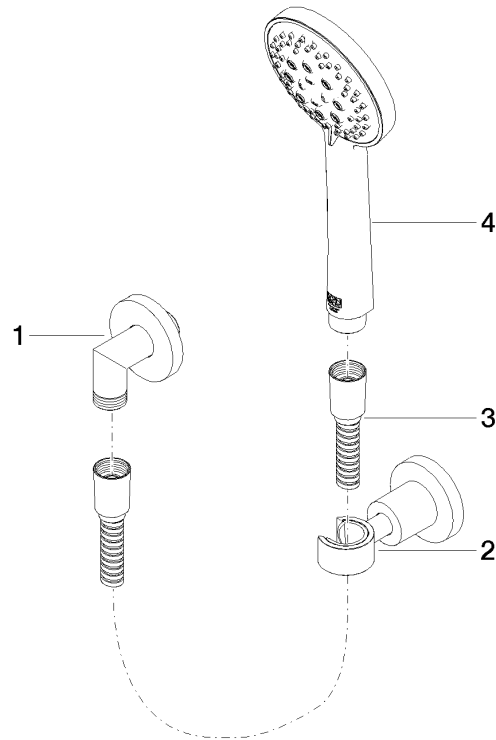
mm [inches]



Flow rate chart



Product version from 7/1/2022





ST 050 407 1970

Spare parts list

Product version from 7/1/2022

No.	Item Number	Name	Quantity used	Delivery time
	28 450 892-00	connection	4	60