


Headshower solution - Champagne (22kt Gold)

IMO




ST 050 407 4970

<div>✖</div>		Champagne (22kt Gold)	ST 050 407 4970-47 0050
		Chrome	ST 050 407 4970-00 0050
		Brushed Platinum	ST 050 407 4970-06 0050
		Platinum	ST 050 407 4970-08 0050
		Dark Chrome	ST 050 407 4970-19 0050
		Brushed Durabrass (23kt Gold)	ST 050 407 4970-28 0050
		Brushed Champagne (22kt Gold)	ST 050 407 4970-46 0050
		Brushed Chrome	ST 050 407 4970-93 0050
		Brushed Dark Platinum	ST 050 407 4970-99 0050

Fits: IMO, MEM, CL.1

Individual components of this set

You need the following components for this set

1x	35 085 970 90		1x	35 425 970 90	
1x	12 380 970 90		1x	36 426 670-47	
1x	27 818 980-47 0050		1x	28 504 670-47 0050	

ST 050 407 4970

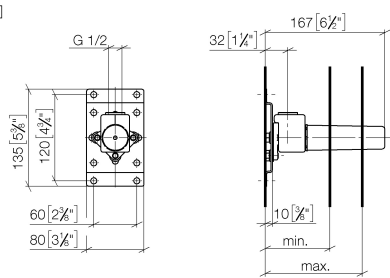


- red brass, lead-free
- female thread 1/2" connection
- 1x female thread 1/2" outlet
- dust cover
- anti-water packing
- soundproofing
- WRAS 240502014, 1904021

For wall-mounted spouts and wall outlet elbows with 1/2" connection.

ST 050 407 4970

mm [inches]



	min	max
CL. 1	90 [3 1/2"]	163 [6 3/8"]
CL. 2	68 [2 5/8"]	135 [5 3/8"]
Domicil	90 [3 1/2"]	163 [6 3/8"]
Gentle	90 [3 1/2"]	163 [6 3/8"]
IMO	90 [3 1/2"]	163 [6 3/8"]
Lissé	90 [3 1/2"]	163 [6 3/8"]
MEM	90 [3 1/2"]	163 [6 3/8"]
Symetrics	90 [3 1/2"]	163 [6 3/8"]
Vaia	90 [3 1/2"]	163 [6 3/8"]

Certificates

LGA_29 WRAS_240502



Headshower solution - Champagne (22kt Gold)

IMO

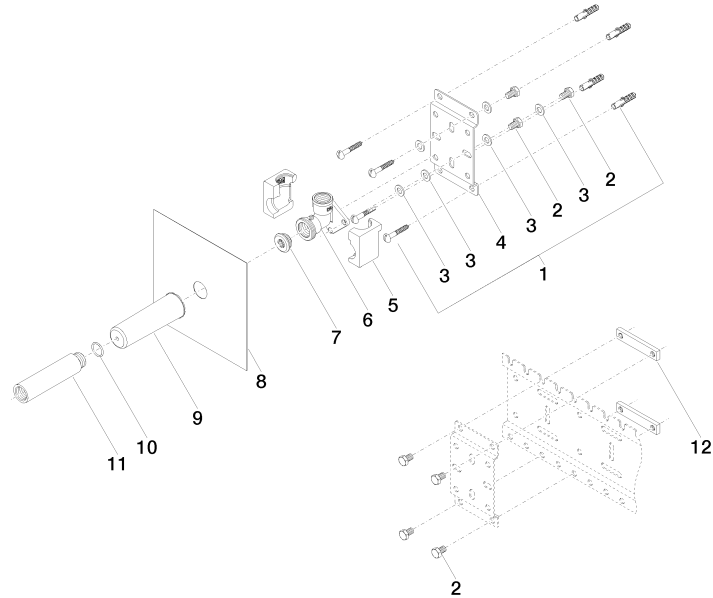
ST 050 407 4970

Codes & Standards

DIN 4109	ISO 3822	Scottish Water Byelaws	UK Water Supply Regulations
----------	----------	---------------------------	--------------------------------

Ü-Zeichen

Product version from 3/7/2023





Headshower solution - Champagne (22kt Gold)

IMO

ST 050 407 4970

Spare parts list

Product version from 3/7/2023

No.	Item Number	Name	Quantity used	Delivery time
	04 30 31 024 01 90	fixing set	25	2

ST 050 407 4970



- lead-free, dezincification resistant
- 2x back flow preventer
- 2x female thread 1/2" connections
- 3x outlet G 1/2"
- dust cover
- anti-water packing
- sound and thermal insulation
- suitable for xGRID (when using installation track + 12 mm recess depth)
- gauge 70 mm
- WRAS 1906098

Recommended miscellaneous



**xGRID Attachment set for
integrating in the dry wall
construction -**

12 340 970 90

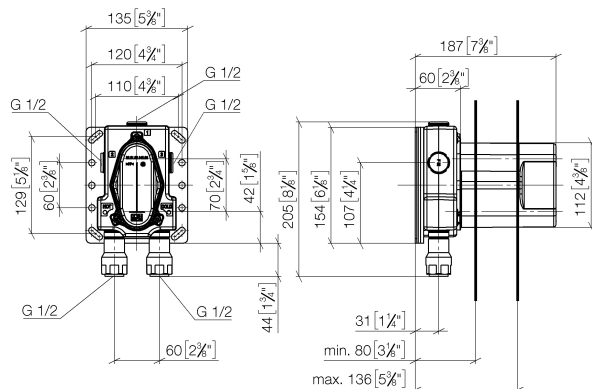
Required miscellaneous



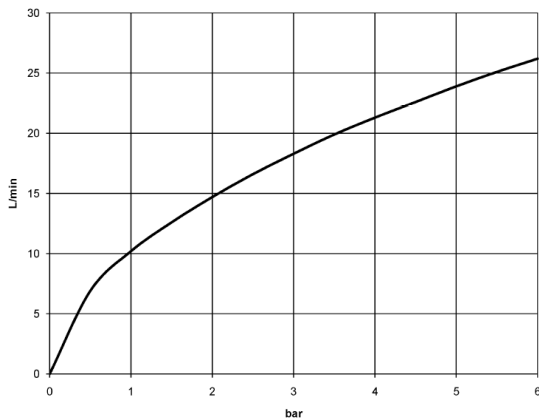
xGRID Installation track 555 mm - 12 360 970 90

ST 050 407 4970

mm [inches]



Flow rate chart



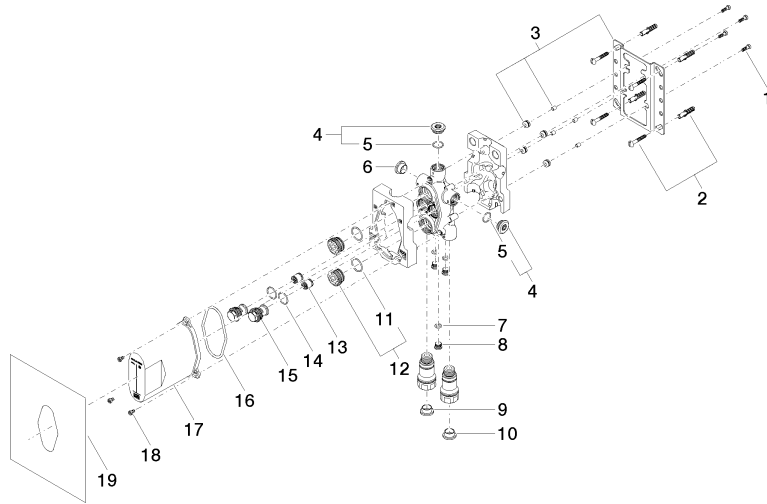
Certificates

WRAS_1906 DVGW_DW-6512DN0 Belgaqua_21-031-2 ETA_20

Codes & Standards

EN 1111	EN 1717	Scottish Water Byelaws	UK Water Supply Regulations
---------	---------	---------------------------	--------------------------------

VA-Zeichen





Headshower solution - Champagne (22kt Gold)

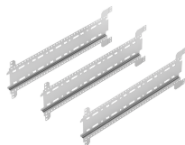
IMO

ST 050 407 4970

Spare parts list

No.	Item Number	Name	Quantity used	Delivery time
	09 30 30 171 90	screw	35	2

ST 050 407 4970

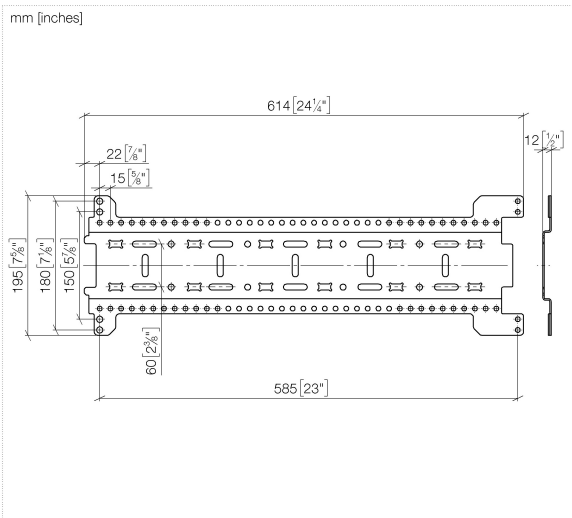


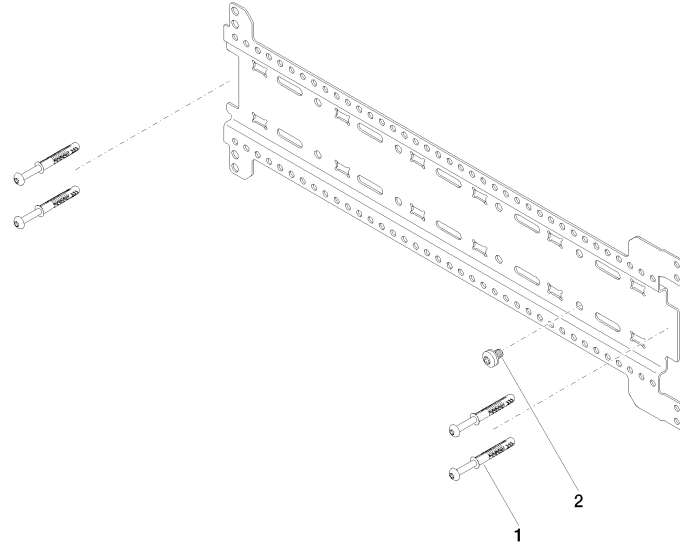
- width 555mm
- height 135 mm
- depth 12 mm
- retaining screws and plugs

This set contains 3 xGrid installation tracks and includes fixing material

More about the xGRID installation track can be found in the Shower Book brochure

ST 050 407 4970







Headshower solution - Champagne (22kt Gold)

IMO

ST 050 407 4970

Spare parts list

No.	Item Number	Name	Quantity used	Delivery time
	04 30 31 054 00 90	fixing set	9	2

Headshower solution - Champagne (22kt Gold)












IMO

ST 050 407 4970



Fits: IMO, MEM, CL.1, CYO

- rotary diverter with volume control and shut-off function
- cover plate 150 x 90 mm
- temperature control handle with safety limit stop at 38°C
- hot water temperature limiter, can be preset
- WRAS 1906098

	Champagne (22kt Gold)	36 426 670-4
	Chrome	36 426 670-0
	Brushed Platinum	36 426 670-0
	Platinum	36 426 670-0
	Dark Chrome	36 426 670-1
	Brushed Light Gold	36 426 670-2
	Brushed Durabronze (23kt Gold)	36 426 670-2
	Matte Black	36 426 670-3
	Brushed Champagne (22kt Gold)	36 426 670-4
	Brushed Chrome	36 426 670-9
	Brushed Dark Platinum	36 426 670-9

ST 050 407 4970

.7
—
0
—
6
—
8
—
9
—
.7
—
8
—
3
—
6
—
3
—
9
—

Required miscellaneous



Concealed thermostat -
●max. recess depth 136 mm
●min. recess depth 80 mm

35 425 970 90

Recommended miscellaneous



**xGRID Attachment set for
integrating in the dry wall
construction -**

12 340 970 90

Required miscellaneous



**Concealed thermostat with built-in
isolators -**
●max. recess depth 136 mm
●min. recess depth 80 mm

35 426 970 90

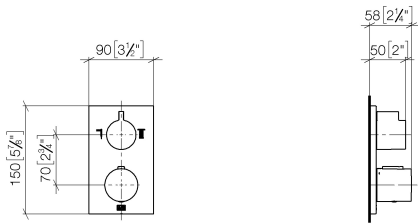
Required miscellaneous



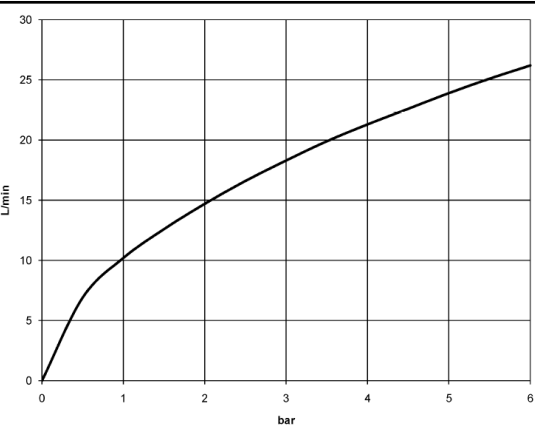
xGRID Installation track 555 mm - 12 360 970 90

ST 050 407 4970

mm [inches]



Flow rate chart



Certificates

WRAS_1906	LGA_19	DVGW_DW-6512DN0	ACS_20 ACC LY	LGA_19
ETA_20				

Codes & Standards			
DIN 4109	EN 1111	ISO 3822	Scottish Water Byelaws
UK Water Supply Regulations	Ü-Zeichen	VA-Zeichen	XP P 41-280

ST 050 407 4970

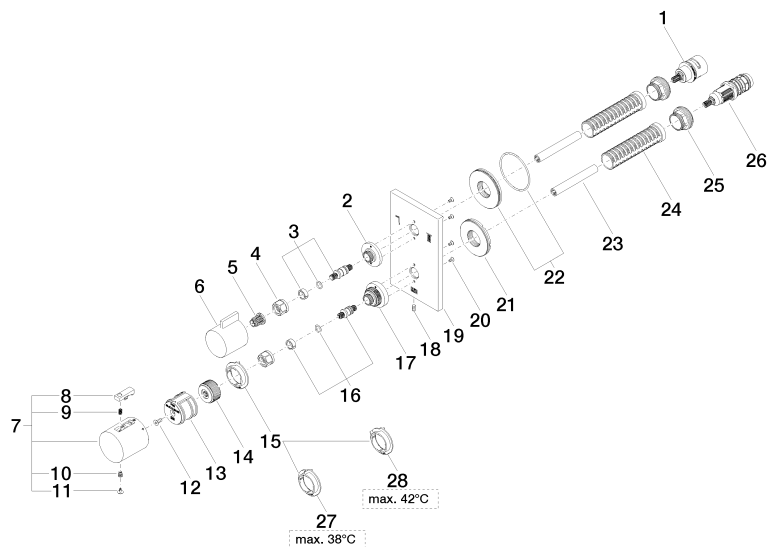
Product version up to 5/15/2020

Product version from 5/15/2020 to 8/24/2020

Product version from 8/24/2020 to 2/1/2021

Product version from 2/1/2021 to 6/30/2022

Product version from 6/30/2022



ST 050 407 4970

Spare parts list

Product version up to 5/15/2020

Product version from 5/15/2020 to 8/24/2020

Product version from 8/24/2020 to 2/1/2021

Product version from 2/1/2021 to 6/30/2022

Product version from 6/30/2022

No.	Item Number	Name	Quantity used	Delivery time
	90 90 03 163 00 90	diverter	35	2

Headshower solution - Champagne (22kt Gold)

IMO

ST 050 407 4970



Fits: IMO, MEM, CL.1, CYO

- COMPACT RAIN, max. flow rate 6.8 l/min (at 3 bar)
- with anti-scale system
- 3/8" shower outlet
- cover plate 240 x 60 mm
- metal shower hose 1250mm with integrated anti-twist protection
- 1/2" wall elbow
- This product can help a building meet the requirements of Green Building Rating Systems, e.g. LEED®, BREEAM®, DGNB

Intrinsic protection against back flow.

	Champagne (22kt Gold)	27 818 980-47 005
	Chrome	27 818 980-00 005
	Brushed Platinum	27 818 980-06 005
	Platinum	27 818 980-08 005
	Dark Chrome	27 818 980-19 005
	Brushed Light Gold	27 818 980-27 005
	Brushed Light Gold	27 818 980-2
	Brushed Durabrass (23kt Gold)	27 818 980-28 005
	Matte Black	27 818 980-33 005
	Brushed Champagne (22kt Gold)	27 818 980-46 005
	Brushed Chrome	27 818 980-93 005
	Brushed Dark Platinum	27 818 980-99 005

ST 050 407 4970

:0
—
:0
—
:0
—
:0
—
:0
—
:0
—
:7
—
:0
—
:0
—
:0
—
:0
—
:0
—
:0
—

Recommended miscellaneous

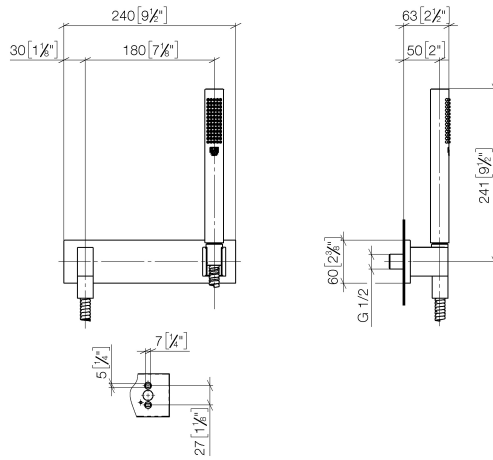


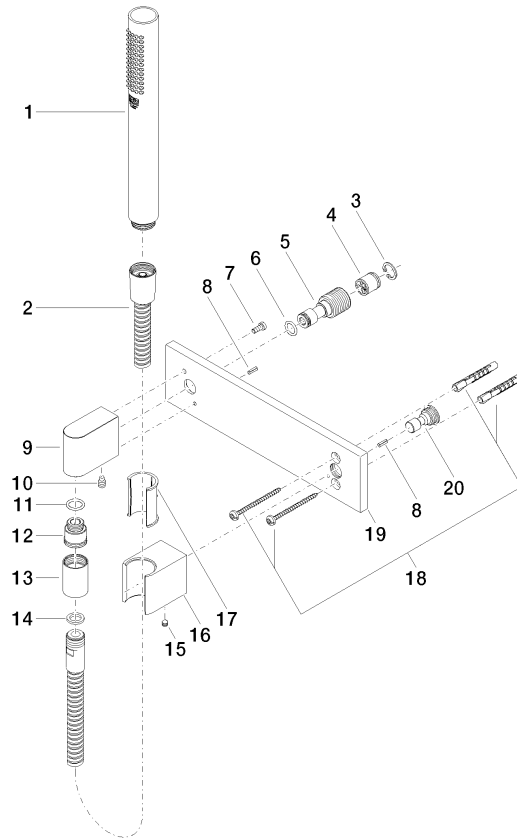
Concealed wall elbow -
●max. recess depth 163 mm
●min. recess depth 90 mm

35 085 970 90

ST 050 407 4970

mm [inches]















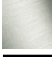
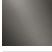
ST 050 407 4970

Spare parts list



Fits: IMO, MEM, CL.1, CYO

- 180-210mm projection
- ball-joint pivotable through 30°
- PURIFY RAIN, max. flow rate 7 l/min (at 3 bar)
- with anti-scale system
- spray head Ø 100mm
- rosette 60 x 60 mm
- 1/2" connection
- This product can help a building meet the requirements of Green Building Rating Systems, e.g. LEED®, BREEAM®, DGNB

	Champagne (22kt Gold)	28 504 670-47 005
	Chrome	28 504 670-00 005
	Brushed Platinum	28 504 670-06 005
	Platinum	28 504 670-08 005
	Dark Chrome	28 504 670-19 005
	Brushed Light Gold	28 504 670-27 005
	Brushed Light Gold	28 504 670-2
	Brushed Durabrass (23kt Gold)	28 504 670-28 005
	Matte Black	28 504 670-33 005
	Brushed Champagne (22kt Gold)	28 504 670-46 005
	Brushed Chrome	28 504 670-93 005
	Brushed Dark Platinum	28 504 670-99 005

ST 050 407 4970

.0
—
.0
—
.0
—
.0
—
.0
—
.0
—
.7
—
.0
—
.0
—
.0
—
.0
—
.0
—
.0
—

Recommended miscellaneous



Concealed wall elbow -
●max. recess depth 163 mm
●min. recess depth 90 mm

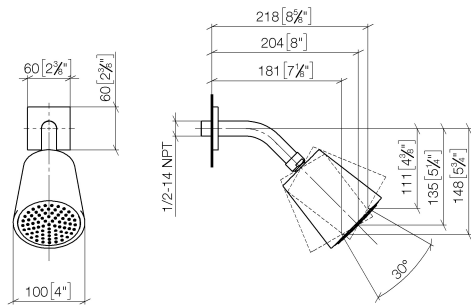
35 085 970 90

Headshower solution - Champagne (22kt Gold)

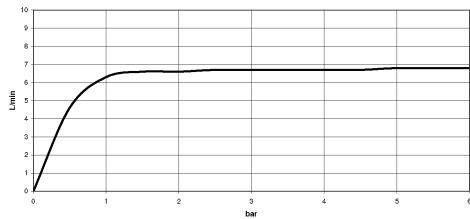
IMO

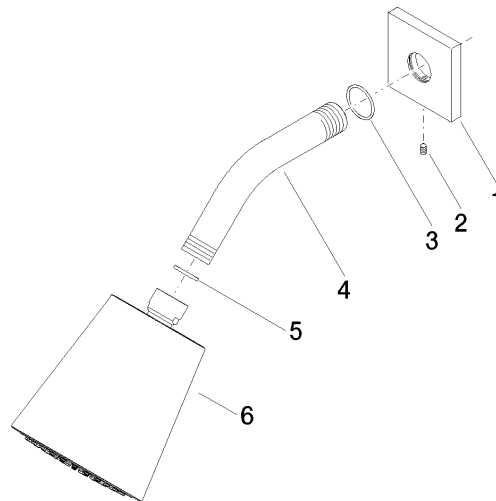
ST 050 407 4970

mm [inches]



Flow rate chart





Spare parts list