

Rainshower solution - Brushed Durabrand (23kt Gold)










ST 050 523 4811



	Brushed Durabrand (23kt Gold)	ST 050 523 4811-28 0050
	Chrome	ST 050 523 4811-00 0050
	Brushed Platinum	ST 050 523 4811-06 0050
	Brushed Dark Platinum	ST 050 523 4811-99 0050

Individual components of this set

You need the following components for this set

	1x	35 085 970 90		1x	35 531 970 90
	1x	12 380 970 90		1x	13 415 979-28
	1x	36 503 780-28		3x	11 187 811-28
	3x	36 607 811-28		1x	27 808 980-28 0050
	1x	28 649 670-28 0050			

Rainshower solution - Brushed Durabrass (23kt Gold)

ST 050 523 4811



- red brass, lead-free
- female thread 1/2" connection
- 1x female thread 1/2" outlet
- dust cover
- anti-water packing
- soundproofing
- WRAS 240502014, 1904021

For wall-mounted spouts and wall outlet elbows with 1/2" connection.

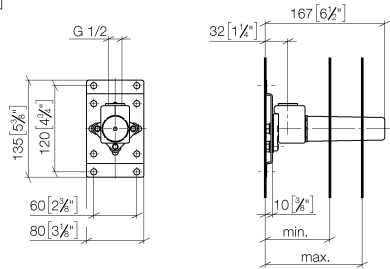
Rainshower solution - Brushed Durabrass (23kt Gold)

ST 050 523 4811

Rainshower solution - Brushed Durabrass (23kt Gold)

ST 050 523 4811

mm [inches]



	min	max
CL. 1	90 [3 1/2"]	163 [6 3/8"]
CL. 2	68 [2 5/8"]	135 [5 3/8"]
Domicil	90 [3 1/2"]	163 [6 3/8"]
Gentle	90 [3 1/2"]	163 [6 3/8"]
IMO	90 [3 1/2"]	163 [6 3/8"]
Lissé	90 [3 1/2"]	163 [6 3/8"]
MEM	90 [3 1/2"]	163 [6 3/8"]
Symetrics	90 [3 1/2"]	163 [6 3/8"]
Vaia	90 [3 1/2"]	163 [6 3/8"]

Certificates

LGA_29

WRAS_240502



Rainshower solution - Brushed Durabrass (23kt Gold)

ST 050 523 4811

Codes & Standards

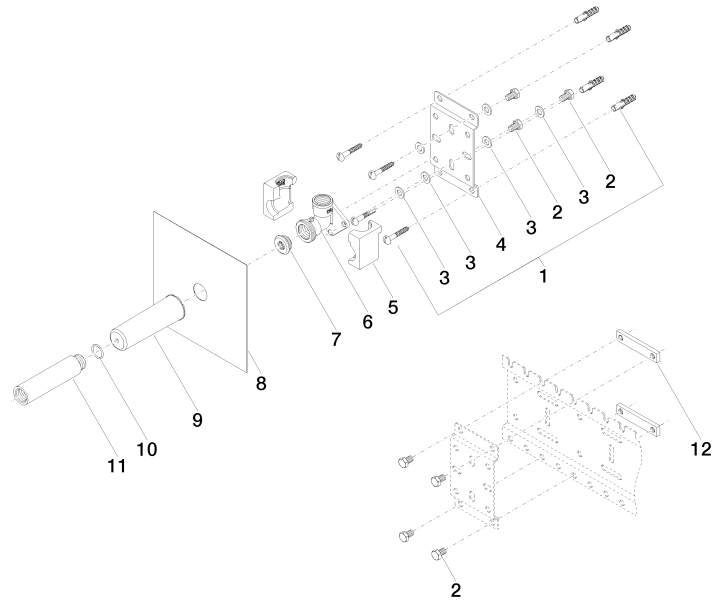
DIN 4109	ISO 3822	Scottish Water Byelaws	UK Water Supply Regulations
----------	----------	---------------------------	--------------------------------

Ü-Zeichen

Rainshower solution - Brushed Durabronz (23kt Gold)

ST 050 523 4811

Product version from 3/7/2023





Rainshower solution - Brushed Durabrass (23kt Gold)

ST 050 523 4811

Spare parts list

Product version from 3/7/2023

No.	Item Number	Name	Quantity used	Delivery time
	04 30 31 024 01 90	fixing set	25	2

Rainshower solution - Brushed Durabron (23kt Gold)

ST 050 523 4811



- red brass, lead-free
- 2x back flow preventer
- 2x female thread 3/4" connections
- 1x female thread 3/4" outlet for additional valves
- 3x female thread 3/4" outlet, right/left alternatively
- 4x dust cover
- 4x anti-water packing
- soundproofing
- gauge 120 mm
- suitable for xGRID (when using installation track + 12 mm recess depth)
- WRAS 2011026

Rainshower solution - Brushed Durabrass (23kt Gold)

ST 050 523 4811

Recommended miscellaneous

Extension 28 mm -

12 177 970 90



Recommended miscellaneous

Extension 46 mm -

12 178 970 90



Recommended miscellaneous

xGRID Attachment set for
integrating in the dry wall
construction -

12 340 970 90



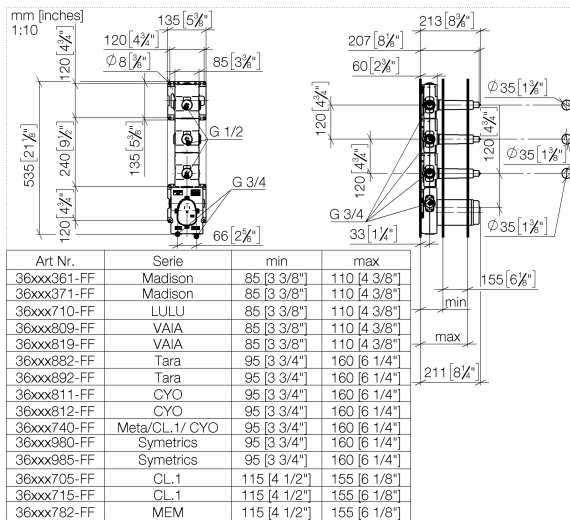
Required miscellaneous

xGRID Installation track 555 mm - 12 360 970 90



Rainshower solution - Brushed Durabrass (23kt Gold)

ST 050 523 4811



Certificates

ACS_21 ACC LY Belgaqua_21-031-2 DVGW_DW-6512DN0 WRAS_2011

Rainshower solution - Brushed Durabrass (23kt Gold)

ST 050 523 4811

Codes & Standards

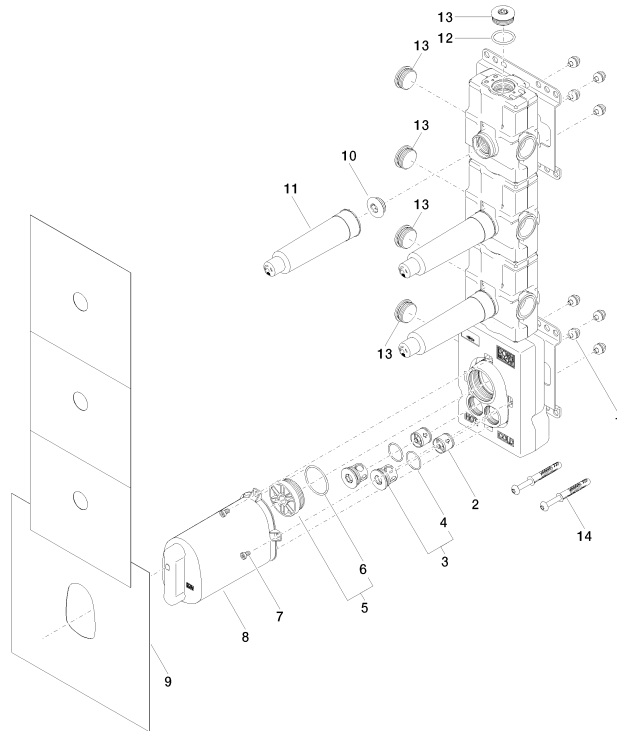
EN 1111	EN 1717	Scottish Water Byelaws	UK Water Supply Regulations
XP P 41-280			

Rainshower solution - Brushed Durabronz (23kt Gold)

ST 050 523 4811

Product version up to 11/25/2021

Product version from 1/1/2022





Rainshower solution - Brushed Durabrass (23kt Gold)

ST 050 523 4811

Spare parts list

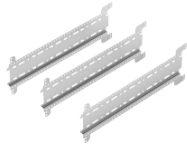
Product version up to 11/25/2021

Product version from 1/1/2022

No.	Item Number	Name	Quantity used	Delivery time
	90 23 01 091 00 90	set	36	2

Rainshower solution - Brushed Durabrass (23kt Gold)

ST 050 523 4811



- width 555mm
- height 135 mm
- depth 12 mm
- retaining screws and plugs

This set contains 3 xGrid installation tracks and includes fixing material

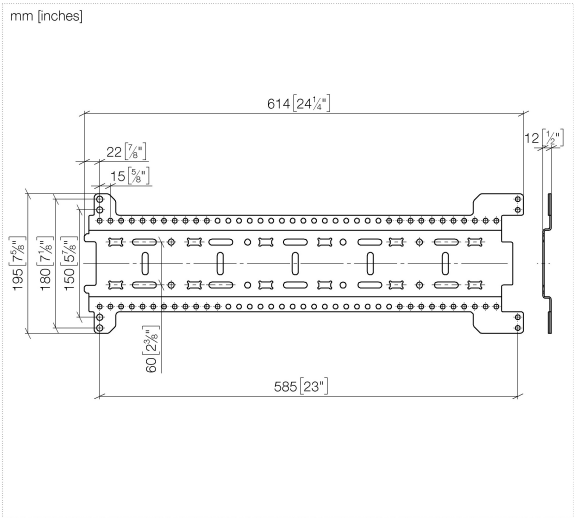
More about the xGRID installation track can be found in the Shower Book brochure

Rainshower solution - Brushed Durabron (23kt Gold)

ST 050 523 4811

Rainshower solution - Brushed Durabrass (23kt Gold)

ST 050 523 4811

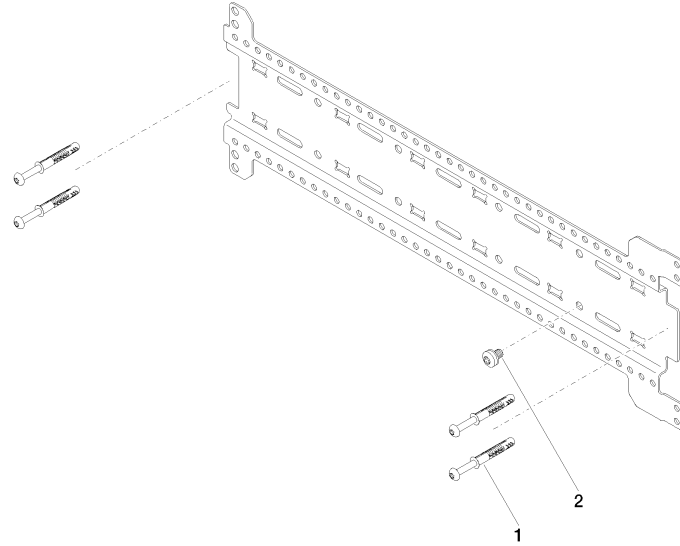


Rainshower solution - Brushed Durabron (23kt Gold)

ST 050 523 4811

Rainshower solution - Brushed Durabronz (23kt Gold)

ST 050 523 4811





Rainshower solution - Brushed Durabrass (23kt Gold)

ST 050 523 4811

Spare parts list

No.	Item Number	Name	Quantity used	Delivery time
	04 30 31 054 00 90	fixing set	9	2


Rainshower solution - Brushed Durabronze (23kt Gold)

ST 050 523 4811



- 150mm projection
- CASCADE, max. flow rate 26.5 l/min (at 3 bar)
- cover plate 240 x 60 mm
- 1/2" connection
- plug-link mounting
- WRAS 2306001

Fits: IMO, LULU, MADISON, MEM, TARA,
CL.1, LISSÉ, VAIA, META, CYO

	Brushed Durabronze (23kt Gold)	13 415 979-2
	Chrome	13 415 979-0
	Brushed Platinum	13 415 979-0
	Platinum	13 415 979-0
	Dark Chrome	13 415 979-1
	Light Gold	13 415 979-2
	Brushed Light Gold	13 415 979-2
	Matte Black	13 415 979-3
	Brushed Bronze	13 415 979-4
	Brushed Champagne (22kt Gold)	13 415 979-4
	Champagne (22kt Gold)	13 415 979-4
	Brushed Chrome	13 415 979-9
	Brushed Dark Platinum	13 415 979-9



Rainshower solution - Brushed Durabrass (23kt Gold)

ST 050 523 4811

:8
—
:10
—
:16
—
:18
—
9
—
:6
—
:7
—
:3
—
2
—
6
—
:7
—
:3
—
:9
—

Recommended miscellaneous



Concealed wall elbow -
•max. recess depth 163 mm
•min. recess depth 90 mm

35 085 970 90

Recommended miscellaneous



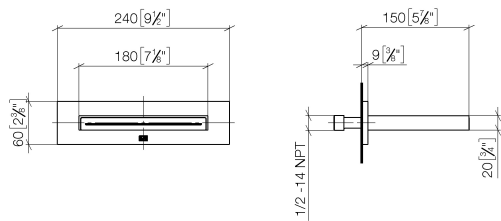
Concealed wall elbow -
•max. recess depth 163 mm
•min. recess depth 90 mm

35 085 970 90

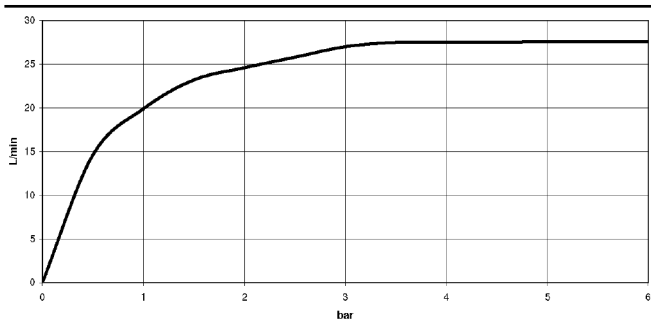
Rainshower solution - Brushed Durabron (23kt Gold)

ST 050 523 4811

mm [inches]



Flow rate chart



Certificates

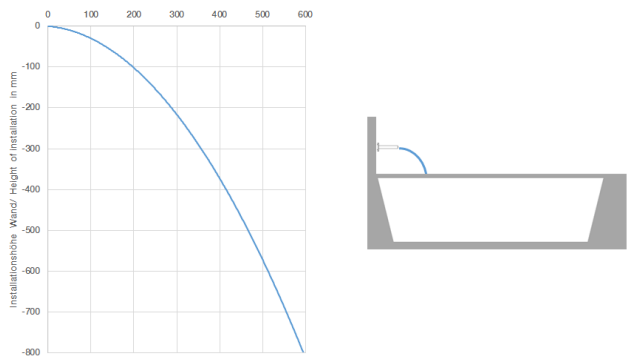
LGA_19

WRAS_2306

Rainshower solution - Brushed Durabrass (23kt Gold)

ST 050 523 4811

Trajectory diagram



Codes & Standards

DIN 4109	ISO 3822	Scottish Water Byelaws	UK Water Supply Regulations
----------	----------	------------------------	-----------------------------

Ü-Zeichen

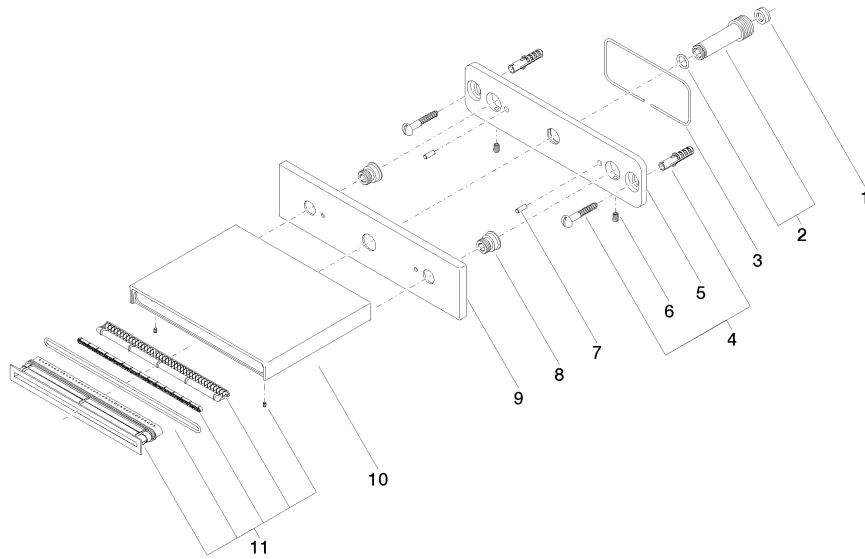
Rainshower solution - Brushed Durabrass (23kt Gold)

ST 050 523 4811

Rainshower solution - Brushed Durabronz (23kt Gold)

ST 050 523 4811

Product version from 10/1/2023





Rainshower solution - Brushed Durabrass (23kt Gold)

ST 050 523 4811

Spare parts list

Product version from 10/1/2023

No.	Item Number	Name	Quantity used	Delivery time
	09 23 01 057 90	flow reducer	14	2



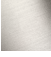



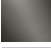
Rainshower solution - Brushed Durabrand (23kt Gold)

ST 050 523 4811

Error: Subreport could not be shown.



- without marking

	Brushed Durabrand (23kt Gold)	11 187 811-2
	Chrome	11 187 811-0
	Brushed Platinum	11 187 811-0
	Platinum	11 187 811-0
	Durabrand (23kt Gold)	11 187 811-0
	Dark Chrome	11 187 811-1
	Brushed Dark Platinum	11 187 811-9



Rainshower solution - Brushed Durabrass (23kt Gold)

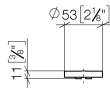
ST 050 523 4811

:8
—
10
—
16
—
18
—
19
—
9
—
19
—

Rainshower solution - Brushed Durabrass (23kt Gold)

ST 050 523 4811

mm [inches]



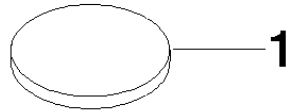
Rainshower solution - Brushed Durabrass (23kt Gold)

ST 050 523 4811

Rainshower solution - Brushed Durabrass (23kt Gold)

ST 050 523 4811

Parts for other
finishes can be found
here: [Chrome](#)




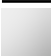





Rainshower solution - Brushed Durabrass (23kt Gold)

ST 050 523 4811

Spare parts list



- without rosette
 - handle Ø 60mm
 - head part with cut-to-length spindle and sleeve
- NOTE: The handle inserts must be ordered separately from the fittings!

	Brushed Durabrass (23kt Gold)	36 607 811-2
	Chrome	36 607 811-0
	Brushed Platinum	36 607 811-0
	Dark Chrome	36 607 811-1
	Platinum / Brushed Platinum	36 607 811-3
	Durabrass / Brushed Durabrass (23kt Gold)	36 607 811-3
	Brushed Dark Platinum	36 607 811-9



Rainshower solution - Brushed Durabrass (23kt Gold)

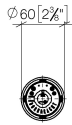
ST 050 523 4811

:8
—
:0
—
:6
—
:9
—
:6
—
:8
—
:9
—

Rainshower solution - Brushed Durabrass (23kt Gold)

ST 050 523 4811

mm [inches]



Certificates

LGA_38

Rainshower solution - Brushed Durabrass (23kt Gold)

ST 050 523 4811

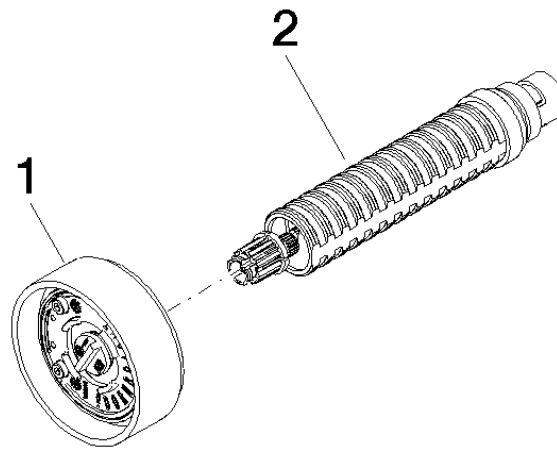
Codes & Standards

DIN 4109	ISO 3822	Ü-Zeichen
----------	----------	-----------

Rainshower solution - Brushed Durabronz (23kt Gold)

ST 050 523 4811

Parts for other
finishes can be found
here: [Chrome](#)





Rainshower solution - Brushed Durabrass (23kt Gold)

ST 050 523 4811

Spare parts list

No.	Item Number	Name	Quantity used	Delivery time
	90 18 40 291 01-28	handle	2	20

Rainshower solution - Brushed Durabronss (23kt Gold)

ST 050 523 4811



Fits: IMO, MEM, CL.1, CYO

- COMPACT RAIN, max. flow rate 6.8 l/min (at 3 bar)
 - with anti-scale system
 - 3/8" shower outlet
 - rosette for wall elbow 60 x 60mm
 - rosette for shower holder 60 x 60mm
 - metal shower hose 1250mm with integrated anti-twist protection
 - 1/2" wall elbow
 - This product can help a building meet the requirements of Green Building Rating Systems, e.g. LEED®, BREEAM®, DGNB
- Intrinsic protection against back flow.

	Brushed Durabronss (23kt Gold)	27 808 980-28 005
	Chrome	27 808 980-00 005
	Brushed Platinum	27 808 980-06 005
	Platinum	27 808 980-08 005
	Dark Chrome	27 808 980-19 005
	Brushed Light Gold	27 808 980-2
	Brushed Light Gold	27 808 980-27 005
	Matte Black	27 808 980-33 005
	Brushed Champagne (22kt Gold)	27 808 980-46 005
	Champagne (22kt Gold)	27 808 980-47 005
	Brushed Chrome	27 808 980-93 005
	Brushed Dark Platinum	27 808 980-99 005

Rainshower solution - Brushed Durabrass (23kt Gold)

ST 050 523 4811

0

0

i0

i0

0

7

0

i0

0

i0

i0

0

Recommended miscellaneous



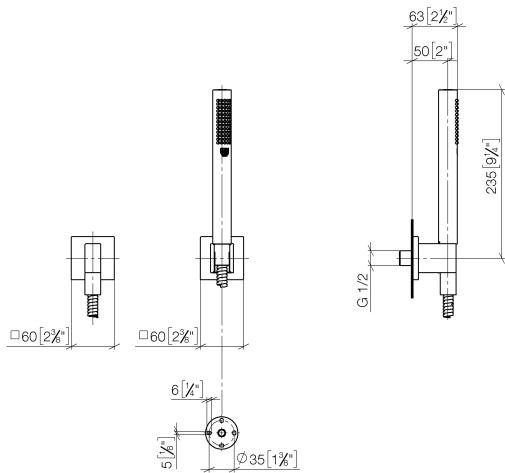
Concealed wall elbow -

- max. recess depth 163 mm
- min. recess depth 90 mm

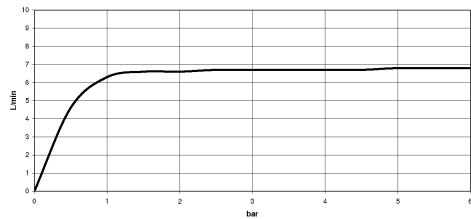
Rainshower solution - Brushed Durabron (23kt Gold)

ST 050 523 4811

mm [inches]



Flow rate chart



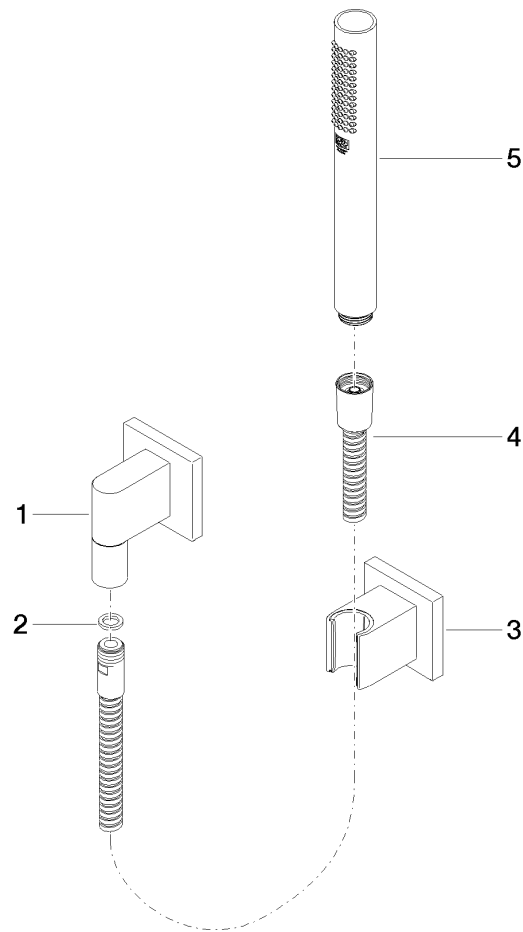
Rainshower solution - Brushed Durabrass (23kt Gold)

ST 050 523 4811

Rainshower solution - Brushed Durabronz (23kt Gold)

ST 050 523 4811

Product version from 7/1/2022





Rainshower solution - Brushed Durabrass (23kt Gold)

ST 050 523 4811

Spare parts list
Product version from 7/1/2022

No.	Item Number	Name	Quantity used	Delivery time
	28 450 980-28	Wall elbow - Brushed Durabrass (23kt Gold)	5	20

Rainshower solution - Brushed Durabronss (23kt Gold)

ST 050 523 4811



Fits: IMO, CYO

- 450mm projection
- rain shower Ø 220 mm
- PURE RAIN, max. flow rate 14 l/min (at 3 bar)
- rosette 65 x 65 mm
- 1/2" connection
- with anti-scale system
- quick clearing
- This product can help a building meet the requirements of Green Building Rating Systems, e.g. LEED®, BREEAM®, DGNB


	Brushed Durabronss (23kt Gold)	28 649 670-28 005
	Chrome	28 649 670-00 005
	Brushed Platinum	28 649 670-06 005
	Platinum	28 649 670-08 005
	Dark Chrome	28 649 670-19 005
	Brushed Light Gold	28 649 670-27 005
	Brushed Light Gold	28 649 670-2
	Matte Black	28 649 670-33 005
	Brushed Champagne (22kt Gold)	28 649 670-46 005
	Champagne (22kt Gold)	28 649 670-47 005
	Brushed Chrome	28 649 670-93 005
	Brushed Dark Platinum	28 649 670-99 005

Rainshower solution - Brushed Durabrass (23kt Gold)

ST 050 523 4811

.0
—
.0
—
.0
—
.0
—
.0
—
.0
—
.7
—
.0
—
.0
—
.0
—
.0
—
.0
—

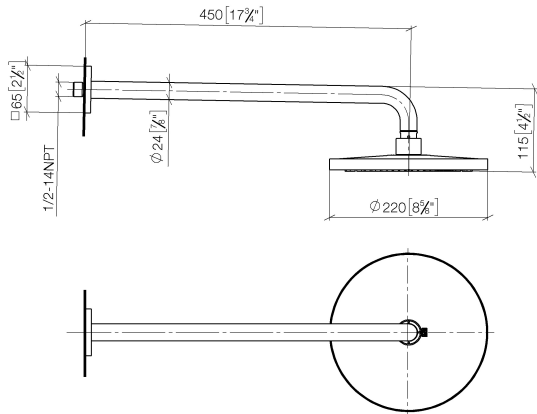
Recommended miscellaneous

	Concealed wall elbow - •max. recess depth 163 mm •min. recess depth 90 mm	35 085 970 90
---	--	---------------

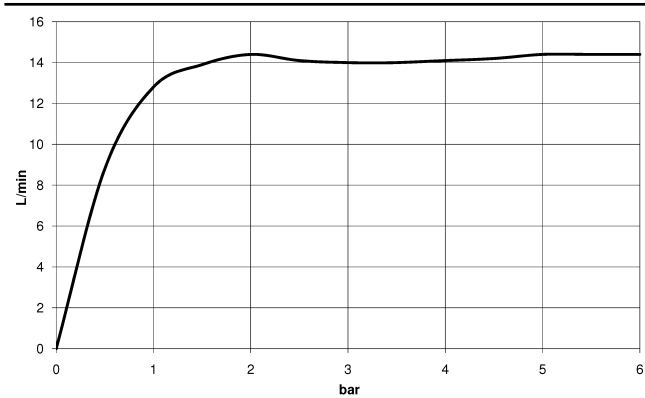
Rainshower solution - Brushed Durabron (23kt Gold)

ST 050 523 4811

mm [inches]



Flow rate chart



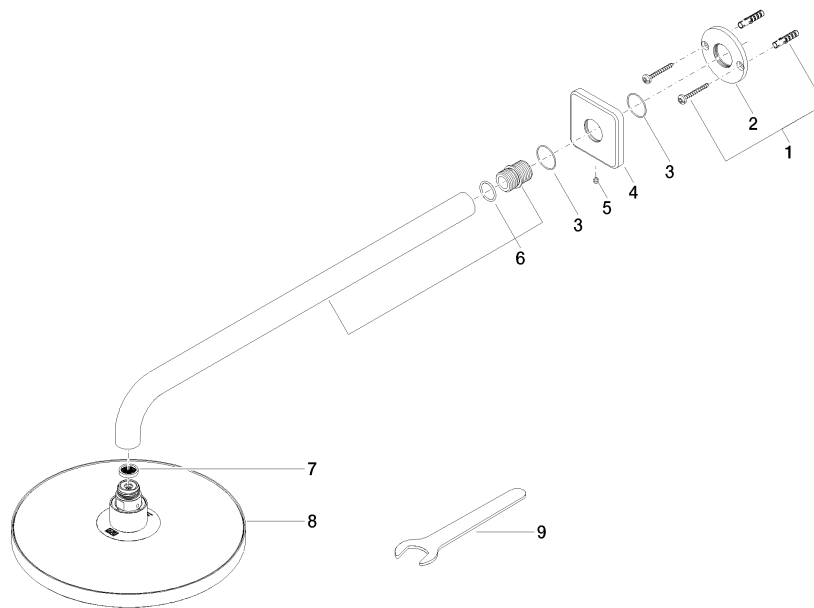
Rainshower solution - Brushed Durabron (23kt Gold)

ST 050 523 4811

Rainshower solution - Brushed Durabronz (23kt Gold)

ST 050 523 4811

Product version from 7/1/2022





Rainshower solution - Brushed Durabrass (23kt Gold)

ST 050 523 4811

Spare parts list

Product version from 7/1/2022

No.	Item Number	Name	Quantity used	Delivery time
	04 30 31 032 00 90	fixing set	10	2