

WATER TUBE Kneipp wall elbow - Chrome

IMO

ST 050 608 3979



Fits: IMO, MEM, CL.1, CYO

- LAMINAR FLOW, max. flow rate 15 l/min (at 3 bar)
- with volume control
- individual rosette 60 x 60 mm
- holder for Kneipp hose
- 1/2" wall elbow
- hose nozzle with sleeve M33
- with holding ring

	Chrome	ST 050 608 3979-00
	Brushed Platinum	ST 050 608 3979-06
	Platinum	ST 050 608 3979-08
	Dark Chrome	ST 050 608 3979-19
	Brushed Light Gold	ST 050 608 3979-27
	Brushed Durabrass (23kt Gold)	ST 050 608 3979-28
	Matte Black	ST 050 608 3979-33
	Brushed Champagne (22kt Gold)	ST 050 608 3979-46
	Champagne (22kt Gold)	ST 050 608 3979-47
	Brushed Chrome	ST 050 608 3979-93
	Brushed Dark Platinum	ST 050 608 3979-99

Individual components of this set

You need the following components for this set



1x 27 821 979-00



1x 28 285 979-00

# WATER TUBE Kneipp wall elbow - Chrome

IMO

ST 050 608 3979



Fits: IMO, MEM, CL.1, CYO

- LAMINAR FLOW, max. flow rate 15 l/min (at 3 bar)
- with volume control
- rosette 60 x 60 mm
- holder for Kneipp hose
- 1/2" wall elbow
- without hose

Intrinsic protection against back flow.

Product change as of 1.4.2023: max. flow 15 l/min

	Chrome	27 821 979-0
	Brushed Platinum	27 821 979-0
	Platinum	27 821 979-0
	Dark Chrome	27 821 979-1
	Brushed Light Gold	27 821 979-2
	Brushed Durabronz (23kt Gold)	27 821 979-2
	Matte Black	27 821 979-3
	Brushed Champagne (22kt Gold)	27 821 979-4
	Champagne (22kt Gold)	27 821 979-4
	Brushed Chrome	27 821 979-9
	Brushed Dark Platinum	27 821 979-9

ST 050 608 3979

0

—

6

—

8

—

9

—

:7

—

:8

—

:3

—

6

—

:7

—


:3

—


:9

—


Recommended miscellaneous

	<b>Concealed wall elbow -</b> ●max. recess depth 163 mm ●min. recess depth 90 mm	35 085 970 90
---	--	---------------

Required miscellaneous

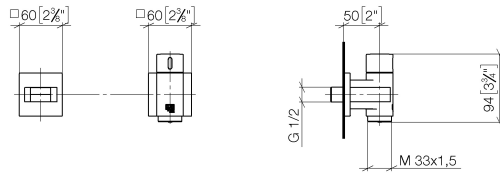
	<b>WATER TUBE Kneipp hose white</b> <b>2000 mm - Chrome</b> ●with holding ring ●hose nozzle with sleeve M33	28 285 979-00
---	--	---------------

Required miscellaneous

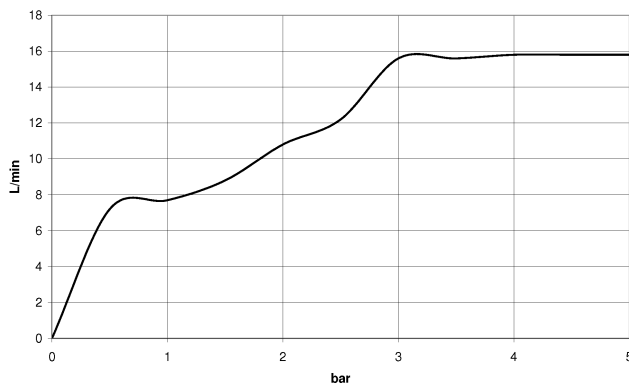
	<b>WATER TUBE Kneipp hose black</b> <b>2000 mm - Chrome</b> ●with holding ring ●hose nozzle with sleeve M33	28 286 979-00
---	--	---------------

ST 050 608 3979

mm [inches]



### Flow rate chart



### Certificates

Belgaqua\_22\_280\_2

## Codes & Standards

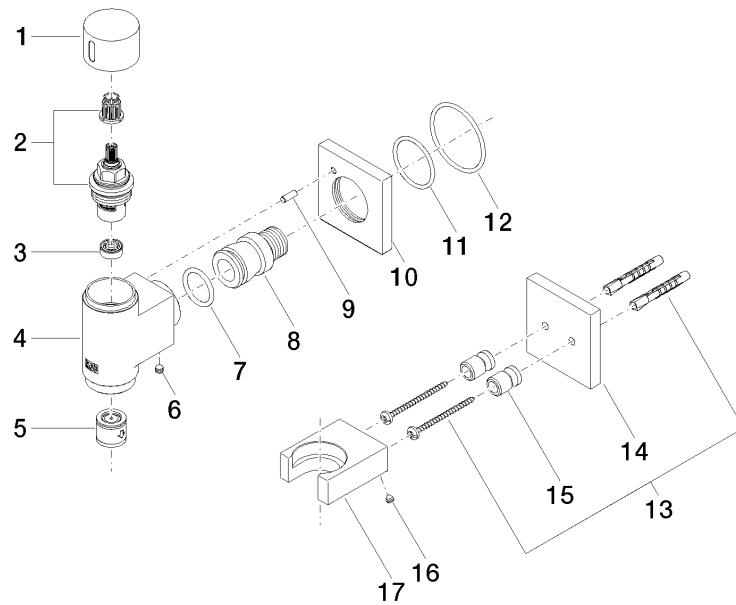
EN 1717



Product version up to 3/12/2018

Product version from 3/12/2018 to 3/6/2023

**Product version from 3/6/2023**



ST 050 608 3979

Spare parts list

Product version up to 3/12/2018

Product version from 3/12/2018 to 3/6/2023

**Product version from 3/6/2023**

No.	Item Number	Name	Quantity used	Delivery time
	28 486 979-00	connection	8	10



WATER TUBE Kneipp wall elbow - Chrome

IMO

ST 050 608 3979



- hose nozzle with sleeve M33
- with holding ring

	Chrome	28 285 979-0
	Brushed Platinum	28 285 979-0
	Platinum	28 285 979-0
	Dark Chrome	28 285 979-1
	Brushed Durabronze (23kt Gold)	28 285 979-2
	Matte Black	28 285 979-3
	Brushed Champagne (22kt Gold)	28 285 979-4
	Champagne (22kt Gold)	28 285 979-4
	Brushed Chrome	28 285 979-9
	Brushed Dark Platinum	28 285 979-9



WATER TUBE Kneipp wall elbow - Chrome

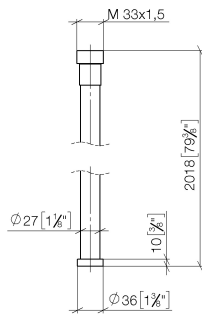
IMO

ST 050 608 3979

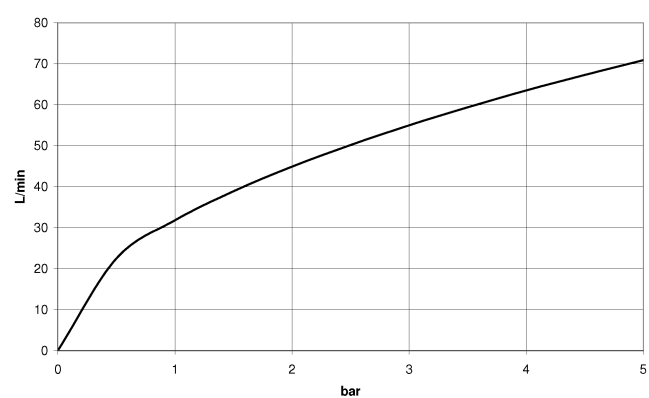
0  
—  
6  
—  
8  
—  
9  
—  
8  
—  
3  
—  
6  
—  
7  
—  
3  
—  
9  
—

ST 050 608 3979

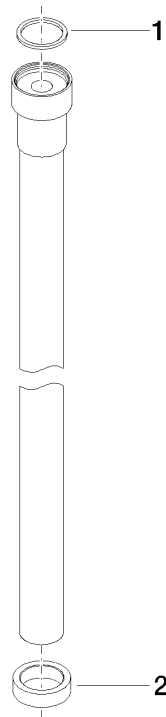
mm [inches]



Flow rate chart









WATER TUBE Kneipp wall elbow - Chrome

IMO

ST 050 608 3979

Spare parts list

No.	Item Number	Name	Quantity used	Delivery time
	09 14 20 003 90	seal	2	2