

WATER TUBE Kneipp wall elbow - Brushed Dark Platinum

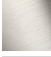



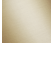

IMO

ST 050 608 4979



Fits: IMO, MEM, CL.1, CYO

- LAMINAR FLOW, max. flow rate 15 l/min (at 3 bar)
- rosette 60 x 60 mm
- holder for Kneipp hose
- 1/2" wall elbow
- hose nozzle with sleeve M33
- with holding ring

	Brushed Dark Platinum	ST 050 608 4979-99
	Chrome	ST 050 608 4979-00
	Brushed Platinum	ST 050 608 4979-06
	Platinum	ST 050 608 4979-08
	Dark Chrome	ST 050 608 4979-19
	Brushed Durabronze (23kt Gold)	ST 050 608 4979-28
	Brushed Champagne (22kt Gold)	ST 050 608 4979-46
	Champagne (22kt Gold)	ST 050 608 4979-47
	Brushed Chrome	ST 050 608 4979-93

Individual components of this set

You need the following components for this set



1x 27 822 979-99



1x 28 285 979-99

WATER TUBE Kneipp wall elbow - Brushed Dark Platinum




IMO

ST 050 608 4979



Fits: IMO, MEM, CL.1, CYO

- laminar flow
 - Max. flow rate l/min (at 3 bar)
 - rosette 60 x 60 mm
 - holder for Kneipp hose
 - 1/2" wall elbow
 - without hose
- Intrinsic protection against back flow.
- Product change as of 1.4.2023: max. flow 15 l/min

	Brushed Dark Platinum	27 822 979-9
	Chrome	27 822 979-0
	Brushed Platinum	27 822 979-0
	Platinum	27 822 979-0
	Dark Chrome	27 822 979-1
	Brushed Durabrand (23kt Gold)	27 822 979-2
	Matte Black	27 822 979-3
	Brushed Champagne (22kt Gold)	27 822 979-4
	Champagne (22kt Gold)	27 822 979-4
	Brushed Chrome	27 822 979-9

ST 050 608 4979

19
—
10
—
16
—
18
—
9
—
18
—
13
—
6
—
7
—
13
—

Required miscellaneous



WATER TUBE Kneipp hose white 28 285 979-99
2000 mm - Brushed Dark Platinum
●with holding ring
●hose nozzle with sleeve M33

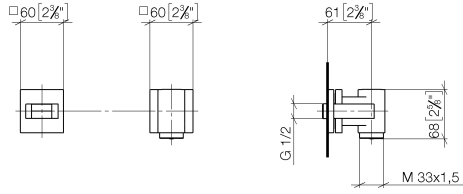
Required miscellaneous



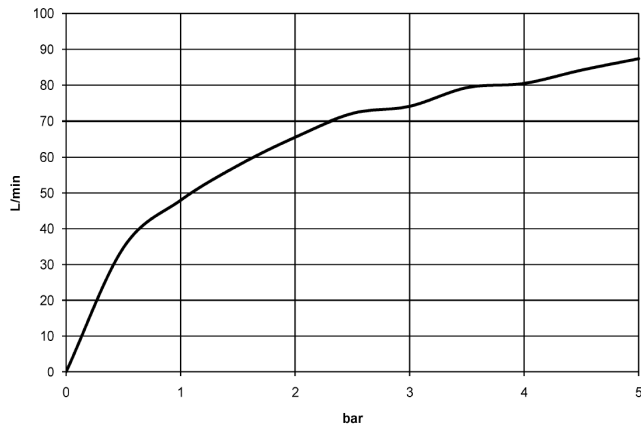
WATER TUBE Kneipp hose black 28 286 979-99
2000 mm - Brushed Dark Platinum
●with holding ring
●hose nozzle with sleeve M33

ST 050 608 4979

mm [inches]



Flow rate chart



Certificates

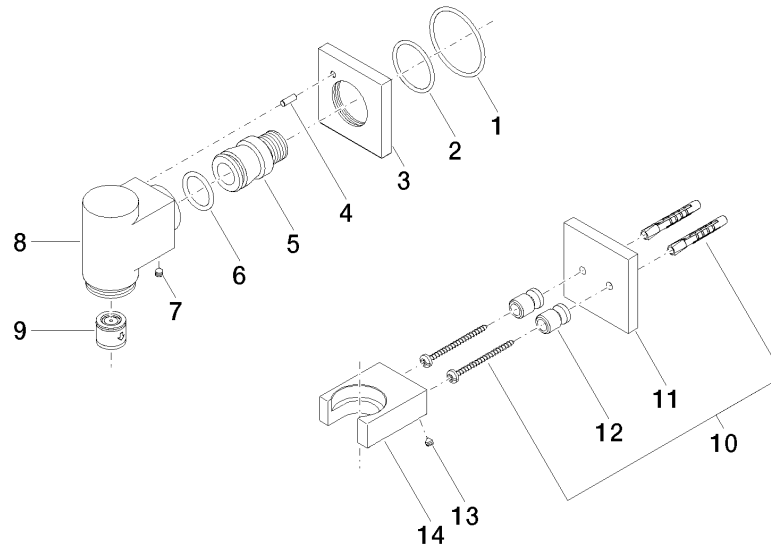
Belgaqua_22_280_2

Codes & Standards

EN 1717

Product version from 3/12/2018

Parts for other
finishes can be found
here: [Chrome](#)








ST 050 608 4979

Spare parts list

Product version from 3/12/2018



- hose nozzle with sleeve M33
- with holding ring

	Brushed Dark Platinum	28 285 979-9
	Chrome	28 285 979-0
	Brushed Platinum	28 285 979-0
	Platinum	28 285 979-0
	Dark Chrome	28 285 979-1
	Brushed Durabronze (23kt Gold)	28 285 979-2
	Matte Black	28 285 979-3
	Brushed Champagne (22kt Gold)	28 285 979-4
	Champagne (22kt Gold)	28 285 979-4
	Brushed Chrome	28 285 979-9



WATER TUBE Kneipp wall elbow - Brushed Dark Platinum

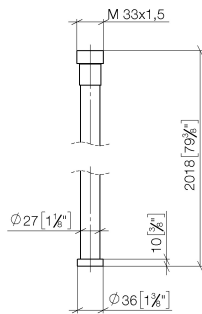
IMO

ST 050 608 4979

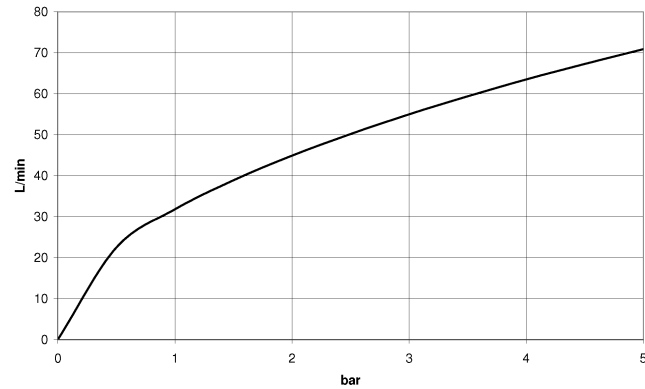
9
—
10
—
16
—
18
—
9
—
8
—
3
—
6
—
7
—
3
—

ST 050 608 4979

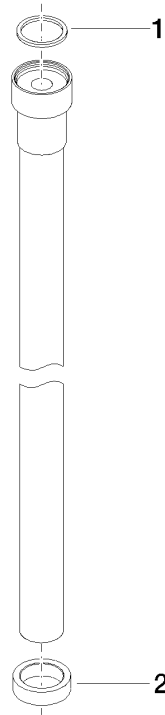
mm [inches]



Flow rate chart



Parts for other
finishes can be found
here: [Chrome](#)





WATER TUBE Kneipp wall elbow - Brushed Dark Platinum

IMO

ST 050 608 4979

Spare parts list

No.	Item Number	Name	Quantity used	Delivery time
	09 14 20 003 90	seal	2	2