


Bath cascade spout for wall mounting - Matte Black

SERIES SPECIFIC

13 430 740


Product version from 9/1/2025



- 200mm projection
- cascade
- plate 180 mm x 60 mm
- hole diameter 40 mm
- 1/2" connection
- plug-link mounting
- max. flow 26.5 l/min at 3 bar flow pressure
- WRAS

| | | |
|---|-------------------------------|---------------|
|  | Matte Black | 13 430 740-33 |
|  | Chrome | 13 430 740-00 |
|  | Brushed Platinum | 13 430 740-06 |
|  | Platinum | 13 430 740-08 |
|  | Dark Chrome | 13 430 740-19 |
|  | Brushed Durabrass (23kt Gold) | 13 430 740-28 |
|  | Brushed Champagne (22kt Gold) | 13 430 740-46 |
|  | Champagne (22kt Gold) | 13 430 740-47 |
|  | Brushed Dark Platinum | 13 430 740-99 |

Recommended miscellaneous



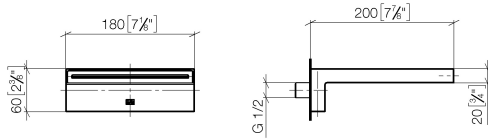
Concealed wall elbow -

- max. recess depth 163 mm
- min. recess depth 90 mm

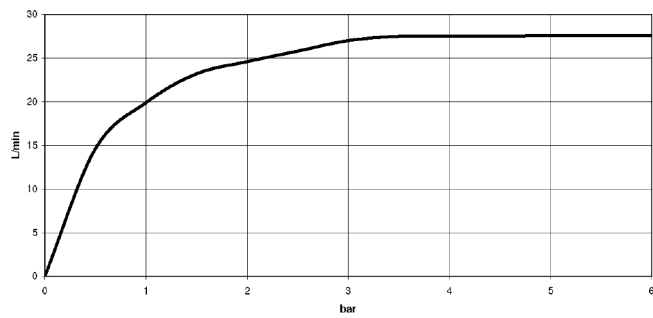
35 085 970 90

13 430 740 Product version from 9/1/2025

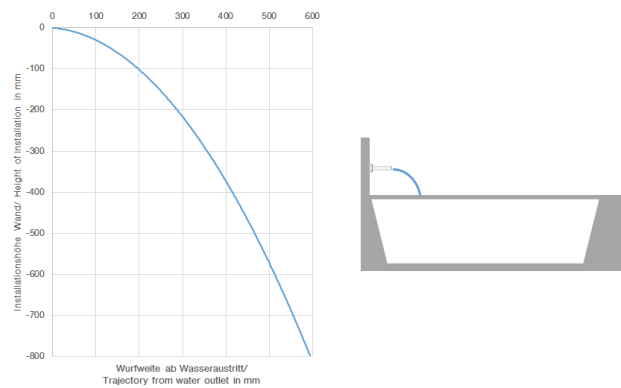
mm [inches]



Flow rate chart



Trajectory diagram



Codes & Standards

ASME A112.18.1

cUPC

DIN 4109

ISO 3822

Scottish Water
Byelaws

UK Water Supply
Regulations

Ü-Zeichen



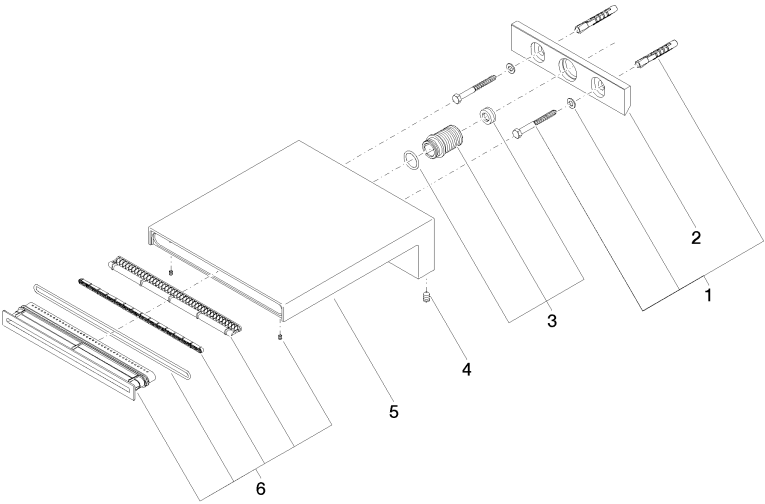
Bath cascade spout for wall mounting - Matte Black

SERIES SPECIFIC

13 430 740 Product version from 9/1/2025

Certificates and sustainability

| | | |
|------------|--------|-------------|
| IAPMO_4976 | LGA_19 | WRAS_240502 |
|------------|--------|-------------|



Spare parts list

| No. | Item Number | Name | Quantity used | Delivery time |
|-----|--------------------|------------|---------------|---------------|
| 2 | 09 17 97 056 90 | holder | 1.00 | 2 |
| 6 | 90 29 03 059 00 90 | insert | 1.00 | 2 |
| 1 | 04 30 31 014 00 90 | fixing set | 1.00 | 2 |
| 3 | 90 24 05 008 00 90 | nipple set | 1.00 | 2 |
| 5 | 09 11 74 042-33 | spout | 1.00 | 60 |
| 4 | 09 31 11 144 90 | pin | 2.00 | 2 |